



# Consequence of the change in the definition of an agricultural parcel

What's it all about?

Once upon a time

Agricultural parcel = continuous area of land on which a **single crop** is cultivated by a single farmer

From 2006 claim year

Art. 2 of Reg. 796/2004 (modified by Reg. 2184/05)

Change to single crop **group** (N.B. changed again by Reg. 972/07)

Group = payment group (SPS, SAPS, coupled...)

DG-AGRI

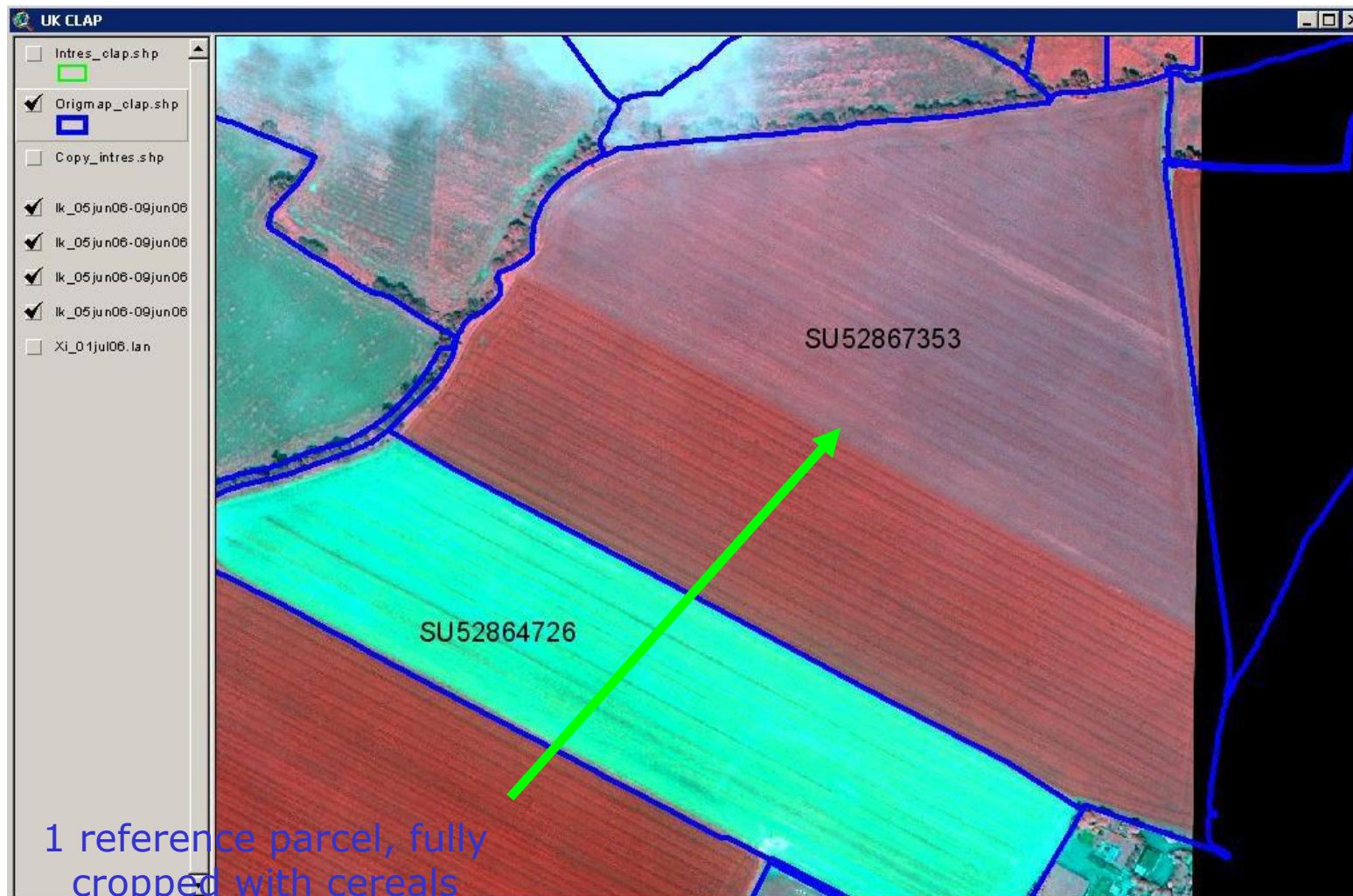
Single crop => increase in retained area / payment

MS Admin

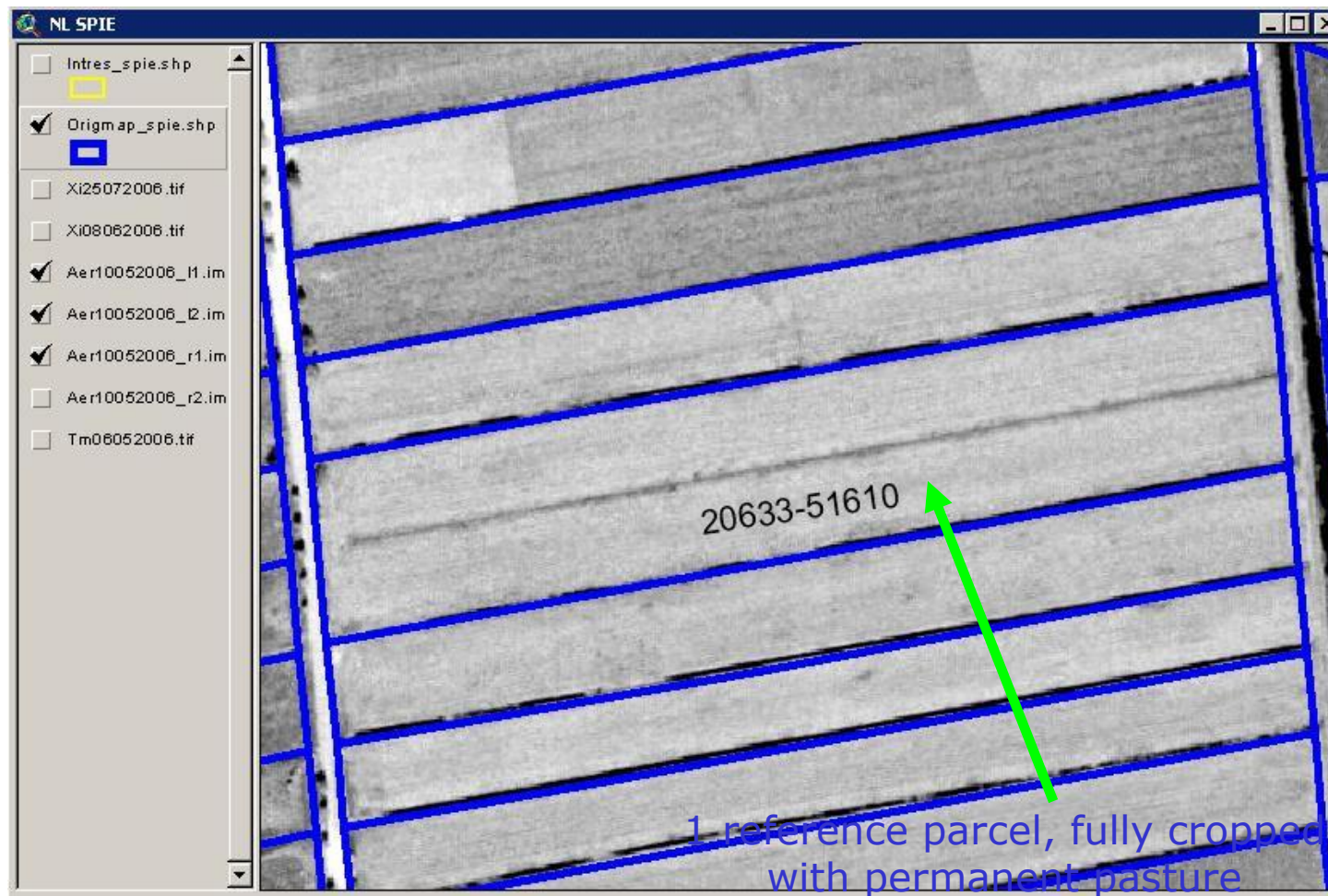
Need to know crops (PP ratio, coupled, AEM, LFA)

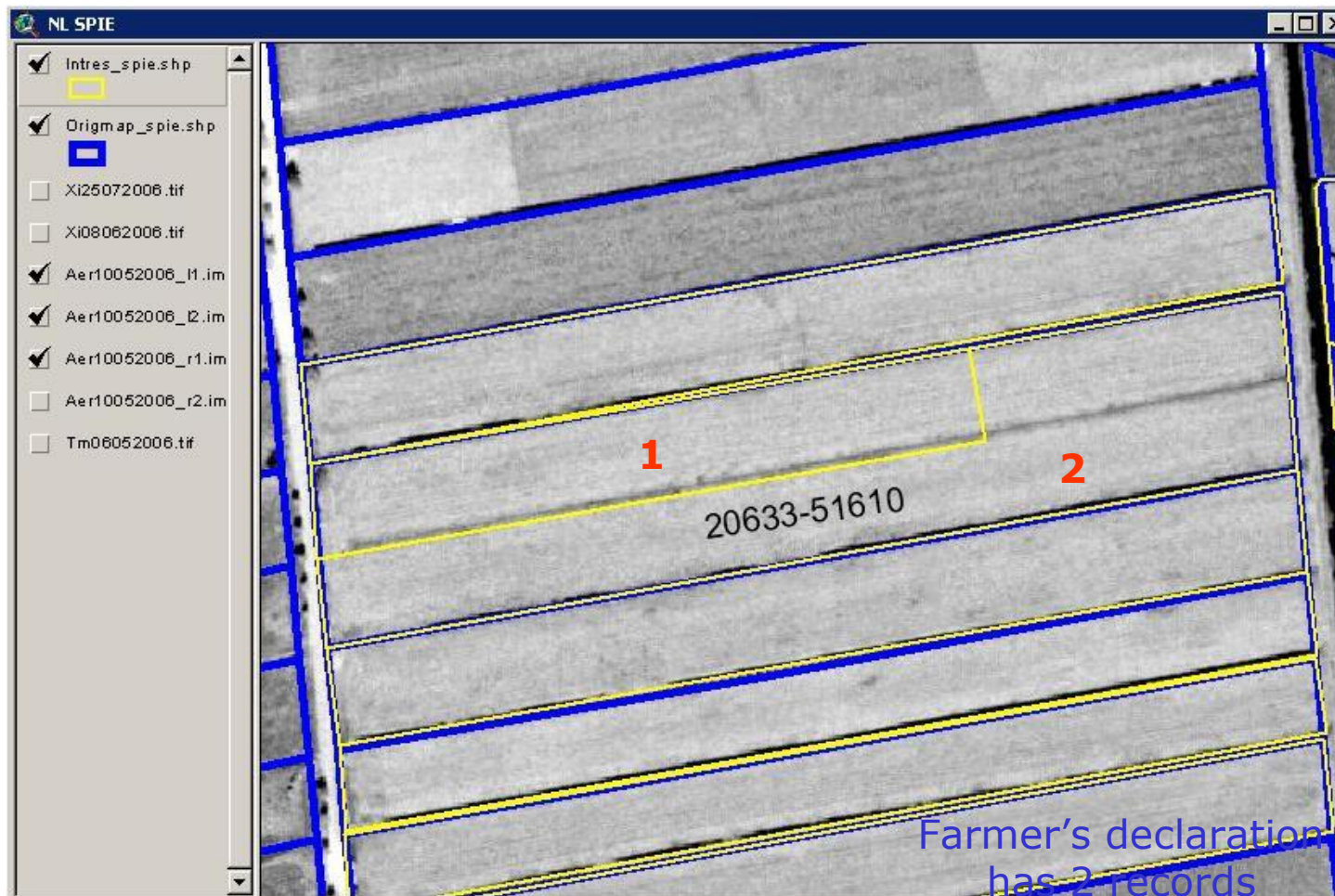
Contractor

New definition => Extra work / multiple vector layers









Scope of study

Selection of QC zones from 2006 campaign Identify  
reference parcels of interest Review parcels in  
ArcView

Parcels, declared crops, groups, measured area & perimeter

1 farmer, >1 declared parcel, # crops > # groups

Are adjacent parcels continuous? (set-aside strips / ineligible  
areas)

Merge vectors, calculate new area and perimeter

Calculate impact

Compute retained area (apply buffer tolerance)

Compare original retained area to new area

Situation in country 'A'

Of 6700 reference parcels: 99.9%

declared by 1 farmer

79% fully declared

89% only 1 declared crop group

19% more than 1 declared parcel

17% more than 1 declared crop

533 reference parcels (9%) with high probability that declared parcels can be merged

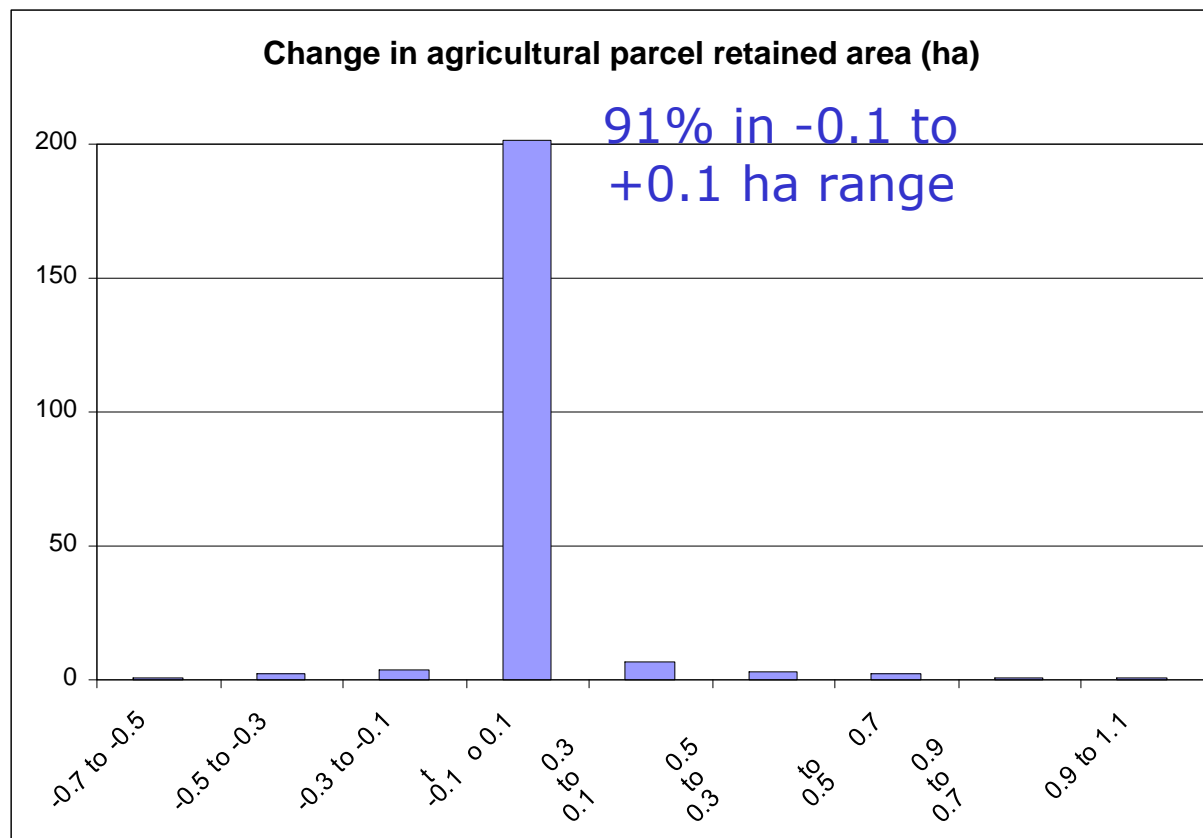
### Results for country 'A' (1)

Based on 256 reference parcels (4% sample)

225 contained parcels of the same group which could be merged

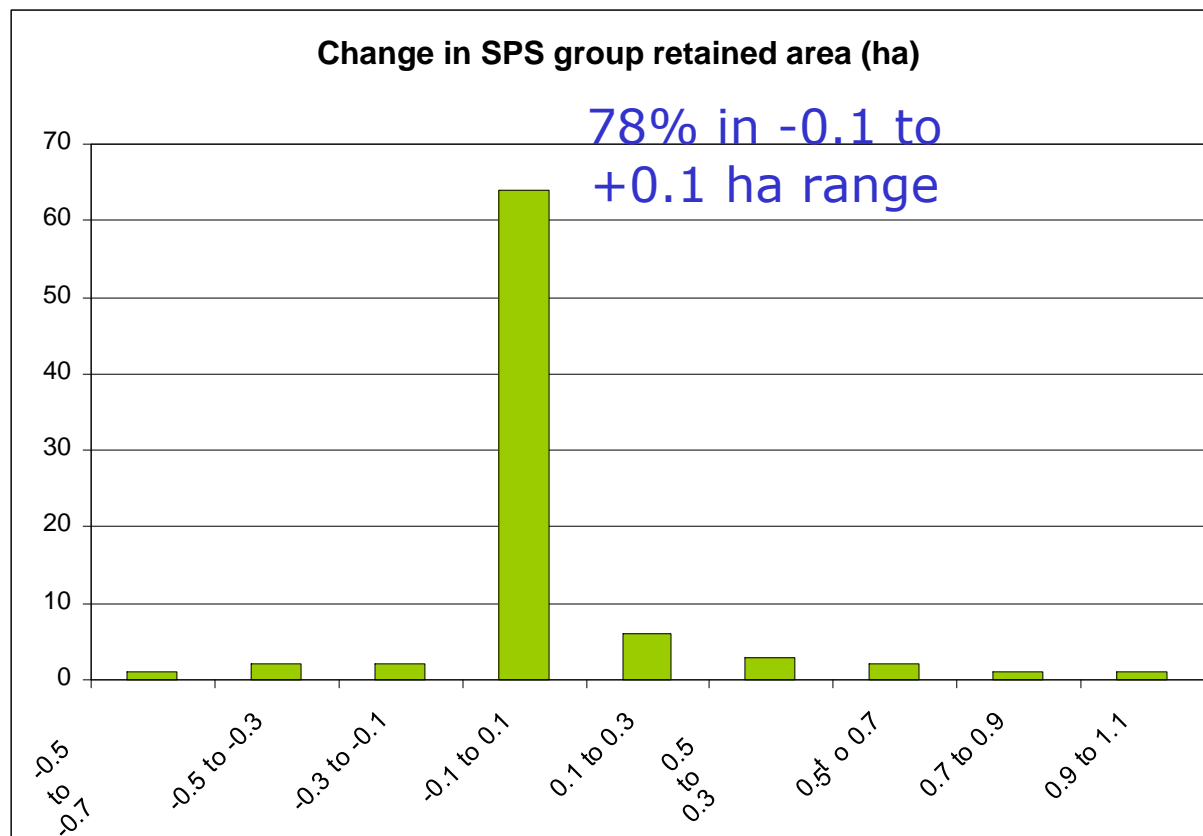
4% sample	Declared area (ha)	Measured area (ha)	Measured perimeter (km)	Retained area (ha)
Original vectors	3465.19	3473.26	636.97	3467.39
Merged vectors	n/a	3473.29	412.99	3470.71
Difference	n/a	0.03	<b>-223.98 (-35%)</b>	<b>+3.32 (+0.1%)</b>

## Results for country 'A'(2)



No change for 76% of reference parcels

## Results for country 'A'(3)



No change for 60% of payment groups

## Situation in country 'B'

Of 3100 reference parcels:-

98% declared by 1 farmer, but...

Only 43% fully declared

99.7% only 1 declared crop group

16% more than 1 declared parcel

8% more than 1 declared crop

253 reference parcels (9%) with high probability that declared parcels can be merged

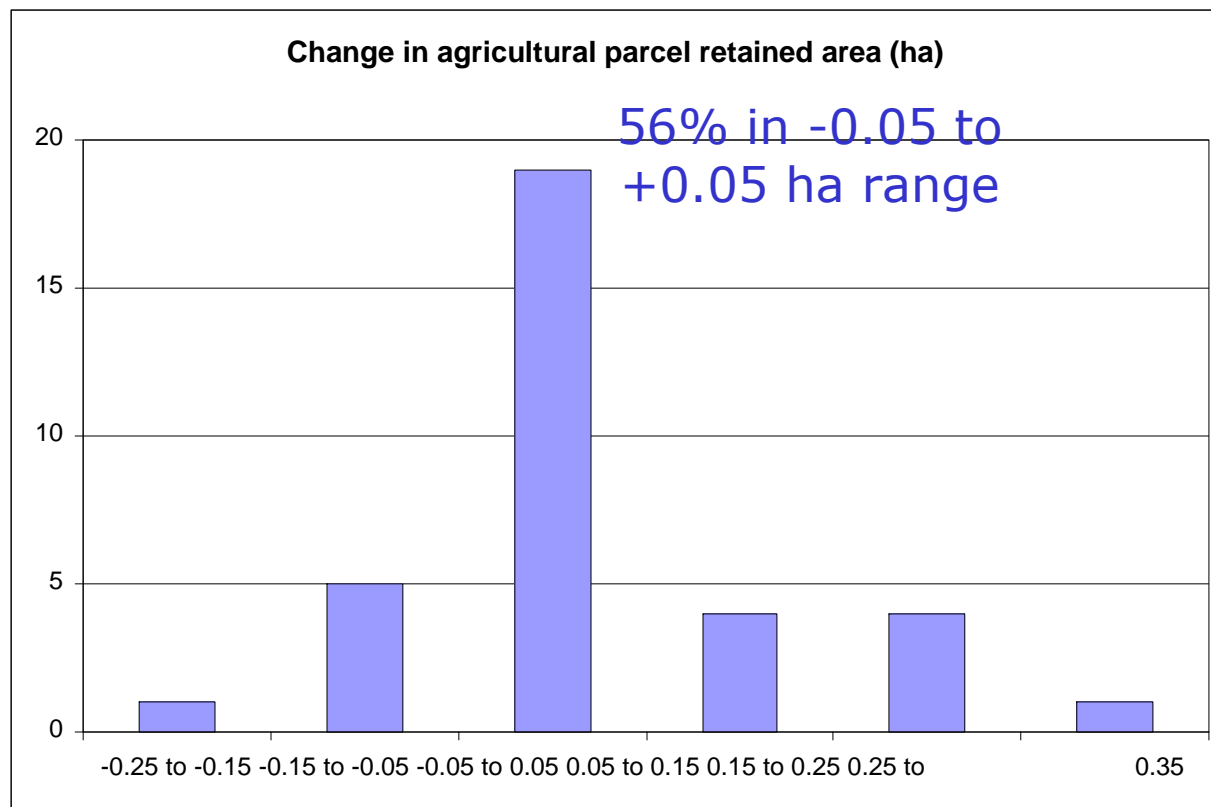
Results in country 'B' (1)

Based on 162 reference parcels (5% sample)

34 contained parcels of the same group which could be merged

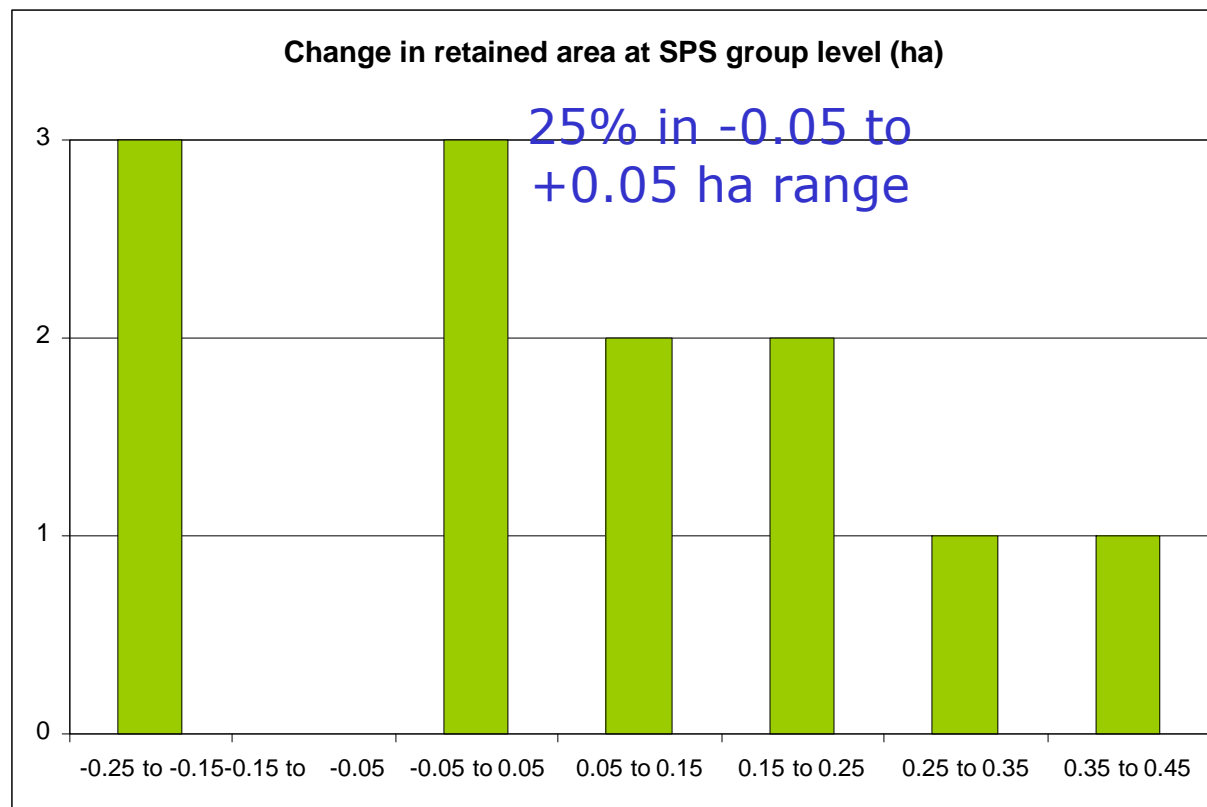
5% sample	Declared area (ha)	Measured area (ha)	Measured perimeter (km)	Retained area (ha)
Original vectors	295.82	299.53	83.16	296.95
Merged vectors	n/a	297.24	52.70	297.71
Difference	n/a	-2.29	<b>-30.46 (-37%)</b>	<b>+0.76 (+0.3%)</b>

## Results in country 'B'(2)



No change for 41% of reference parcels

## Results in country 'B'(3)



No change for 17% of payment groups

## Situation in country 'C'

Of 1900 reference parcels:-

100% declared by 1 farmer

(because agricultural reference parcels)

83% fully declared

Possibility that “true” agricultural parcel incorporates more than 1 declared parcel (i.e. continuous use & farmer)

## Results in country 'C' (1)

Based on 178 reference parcels (10% sample)  
48 declared parcels in 22 groups were merged

3% sample	Declared area (ha)	Measured area (ha)	Measured perimeter (km)	Retained area (ha)
Original vectors	115.67	115.02	33.94	114.63
Merged vectors	n/a	115.21	23.92	114.77
Difference	n/a	+0.19	<b>-10.02 (-30%)</b>	<b>+0.14 (+0.1%)</b>

## Situation in country 'D'

Of 4200 reference parcels:-

68% declared by 1 farmer

Only 16% fully declared (68% > 90% declared)

78% only 1 declared crop group

52% more than 1 declared parcel

47% more than 1 declared crop

1356 reference parcels (30%) with high probability that declared parcels can be merged

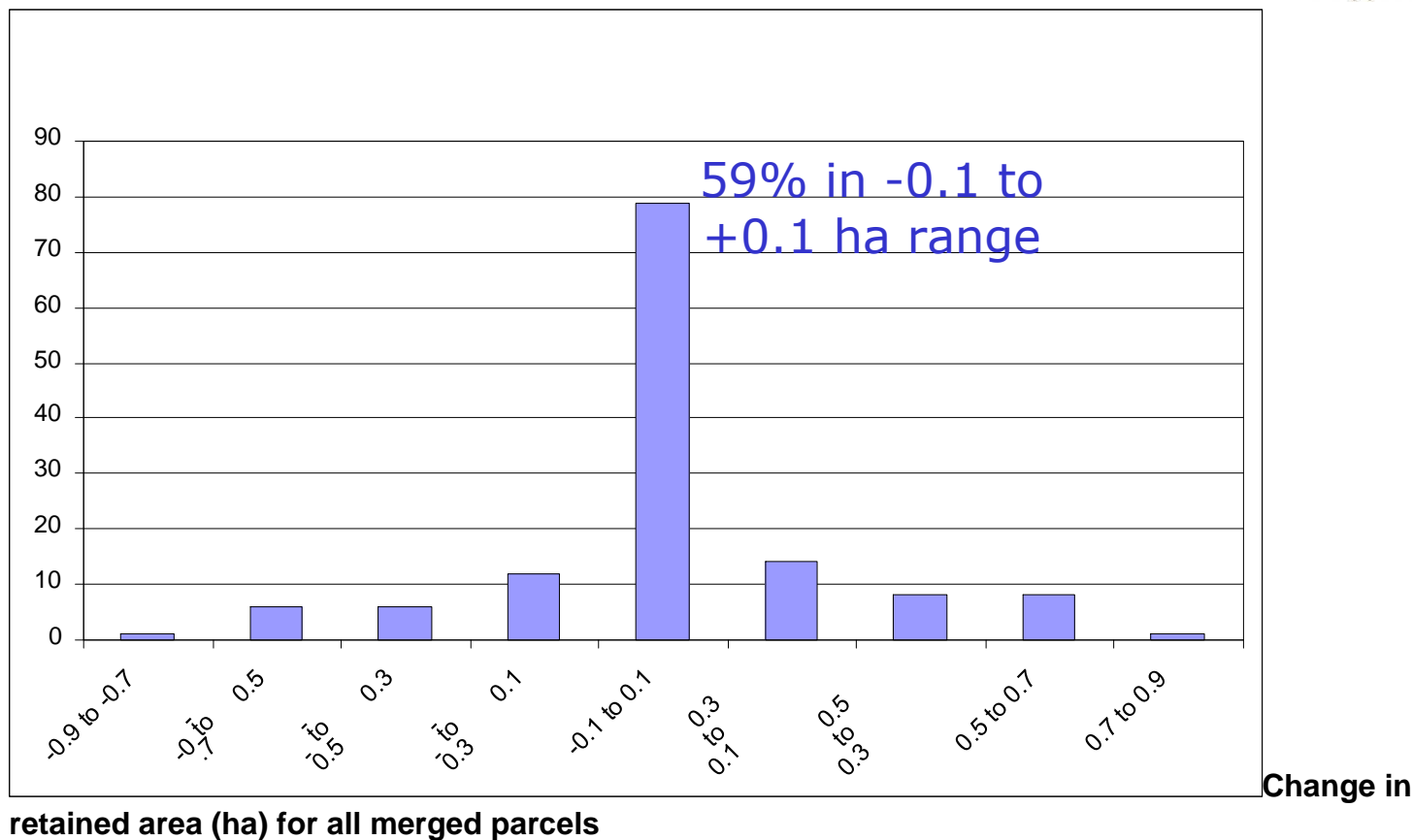
### Results for country 'D' (1)

Based on 136 reference parcels (3% sample)

102 contained parcels of the same group which could be merged

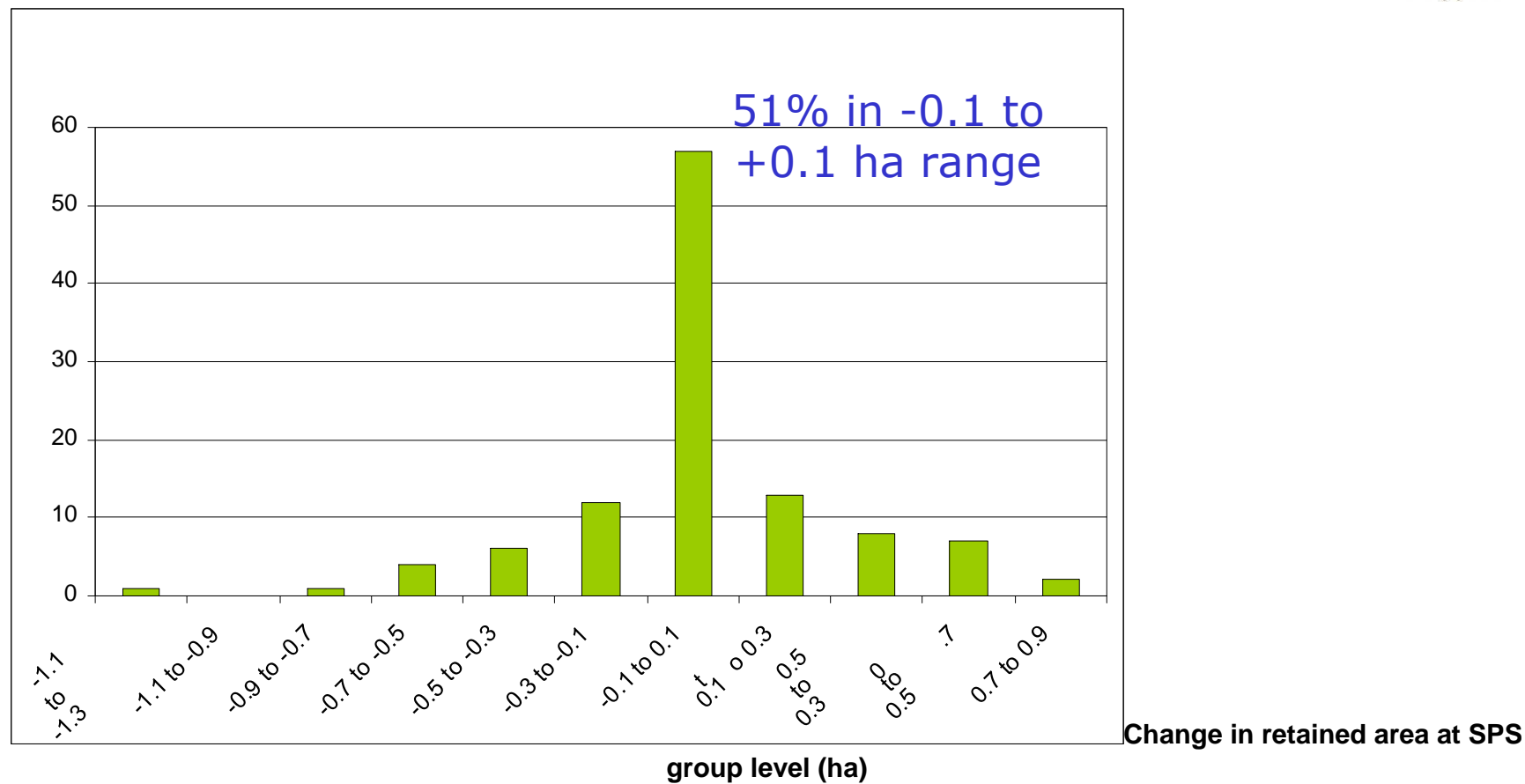
3% sample	Declared area (ha)	Measured area (ha)	Measured perimeter (km)	Retained area (ha)
Original vectors	1467.20	1470.23	370.03	1465.77
Merged vectors	n/a	1469.59	229.85	1468.19
Difference	n/a	-0.64	<b>-140.18 (-38%)</b>	<b>+2.42 (+0.2%)</b>

## Results for country 'D' (2)



No change for 40% of reference parcels

Results for country 'D' (3)



No change for 36% of payment groups

## Declaration & measurement in 2008

Declare single crop parcels / measure single crop parcels  
Declare and measure crop group parcels  
Declare single crop parcels / measure groups as necessary

BE, CY, GR, HU, IT, LT, LV, NL

BG, CZ, MT, PL, SI

DE, DK, EE, ES, FR, IE, RO, SE, SK, UK\_EN, UK\_WA

Conclusion

## Simplification of declaration and interpretation

10% of reference parcels in country “A”

Up to 30% of declared parcels in country “C”

## Negligible impact on retained area Reduction in number of measurements

Between +0.1% and +0.3%

75% of reference parcels in country “A” fully claimed

**No measurement required**

## Greater accuracy of declaration

Elimination of uncertainty over internal boundaries

**Declare and retain (eligible) LPIS reference area**

Perhaps small increase in payment, but justified

# Thank you