

LPIS Update - *Member State Experience Ireland*



Department of
**Agriculture,
Food and the Marine**
An Roinn
**Talmhaíochta,
Bia agus Mara**

Introduction

- LPIS in Ireland
- LPIS Update
 - Scope/Timeframe
 - Imagery
 - Concept
 - Methodology
 - Outcome
- Future?



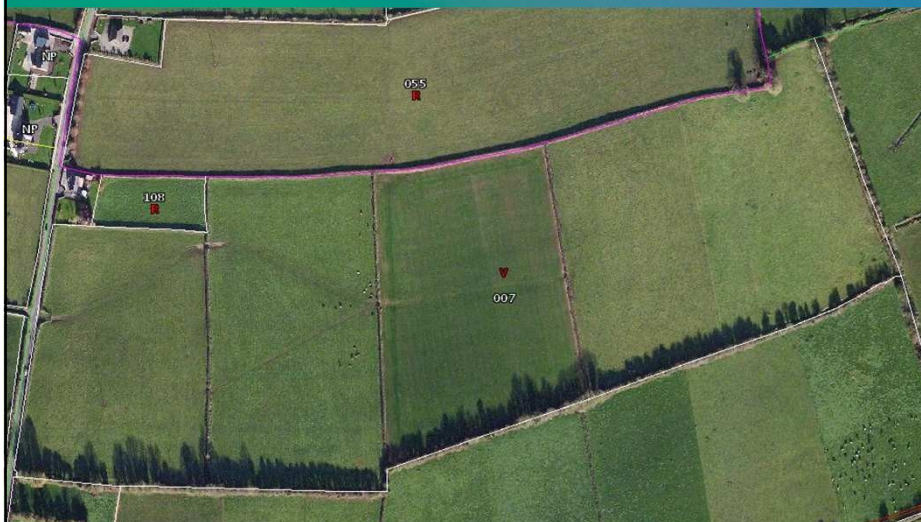
Department of
**Agriculture,
Food and the Marine**
An Roinn
**Talmhaíochta,
Bia agus Mara**

LPIS in Ireland

- Farmers Block by definition...
- Typically one agricultural parcel per reference parcel...
- Typically multiple “fields” within the reference parcel. Divisions indicated by hedgerows...



LPIS in Ireland



LPIS in Ireland

Hedgerows

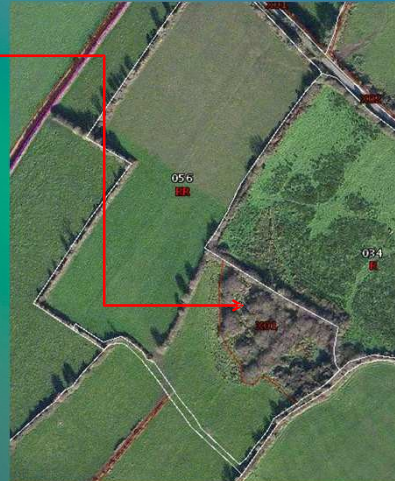


LPIS in Ireland

- Reference Parcels - c. 900,000 eligible for payment
- Exclusion Layer – c. 900,000 exclusions
- Applicants - c.130,000

LPIS in Ireland

Exclusions – “Red Lines”



LPIS Update

- Scope
 - All reference parcels within the LPIS
- Timeframe
 - 5 months (Aug – Dec 2013)
- Imagery
 - BING – www.bing.com/maps
 - 4 band purchased outright (R,G,B,CIR)

LPIS Update

- Concept:
 1. Identify problem parcels i.e. Reference parcels with ineligible features within the boundaries.
 2. Map out these features from the reference parcel and update the reference area.
 3. Update the LPIS in previous years as appropriate.



LPIS Update

BING v Traditional



LPIS Update

- Identify problem parcels...
 1. *Prime*: National Mapping Agency product. Spatial intersect to identify problem parcels.
 2. *Parcel Viewer* : Web based system that presented parcels to operators for basic classification.



LPIS Update

Prime - Buildings



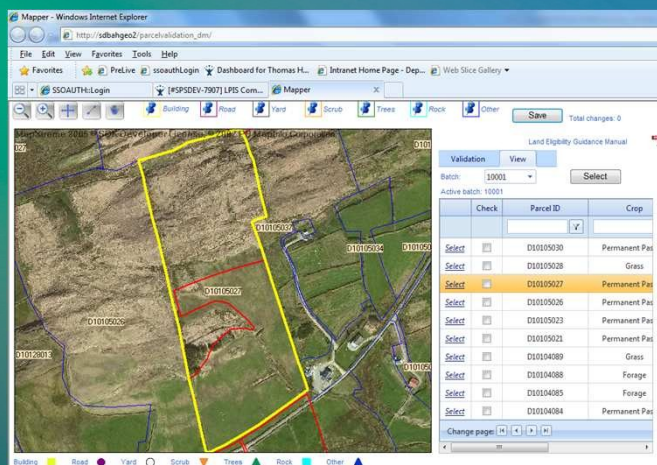
LPIS Review

- Parcel Viewer
 - MapExtreme based
 - LPIS & Exclusions overlaid on BING
 - Pass/Fail/Doubt
 - Parcels that Fail have a point placed to identify the ineligible feature.
 - Once categorised, next parcel presented



LPIS Review

Parcel Viewer



LPIS Update

- Map features out...
 1. *Parcel Reviewer*: Similar to Viewer in terms of build but allowed user to add exclusions as appropriate within the reference parcel boundary.
 2. *Traditional Digitising*...



LPIS Update

Parcel Reviewer



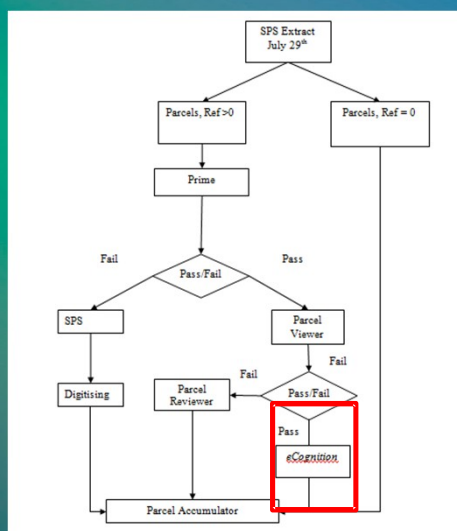
LPIS Update

- Outcome
 - c. 300, 000 parcels with updated reference areas.
 - c. 700,000 exclusions added.
 - Manual updating of reference areas in previous years as appropriate e.g. House built in 2011.



LPIS Update

Workflow



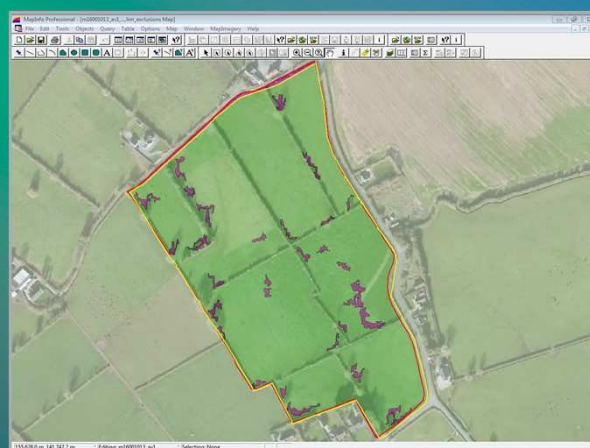
LPIS Update

- *eCognition*
 - OBIA (Object Based Image Analysis)
 - Part of quality control
 - Used individual BING bands plus ancillary spatial data to aid classification
 - Useful aid to process



LPIS Update

eCognition



Future?

- Move to topographical block.
- Rectify reference parcel location issue – “nudge”.
- Reference area changes?
- Use of eCognition to identify hedgerows for Greening?

Thanks

