



MINISTRY OF AGRICULTURE OF THE CZECH REPUBLIC

# EFA Layer

Czech Republic, Ministry of Agriculture



# Overview

- Reference layer in LPIS
- Declared in geospatial aid application (CZ)
  - land lying fallow,
  - field margins,
  - catch crops,
  - N fixing crops;



# EFA layer in LPIS (CZ)

- Landscape features (GAEC)
  - *Field margins/hedge (CZ),*
  - *Terrace,*
  - *Thalweg,*
  - *Group of trees,*
  - *Trees in line,*
  - *Isolated trees*
  - *Ditch,*
- Afforested areas (Art. 32(2))
- Short rotation coppice



# Data

- Vector data – polygon (also for linear landscape features - CZ)
- Portion of the Farmer´s block (landscape features)
- Entire farmer´s block (copy and paste of the polygon): land laying fallow, short rotation coppice, afforested area

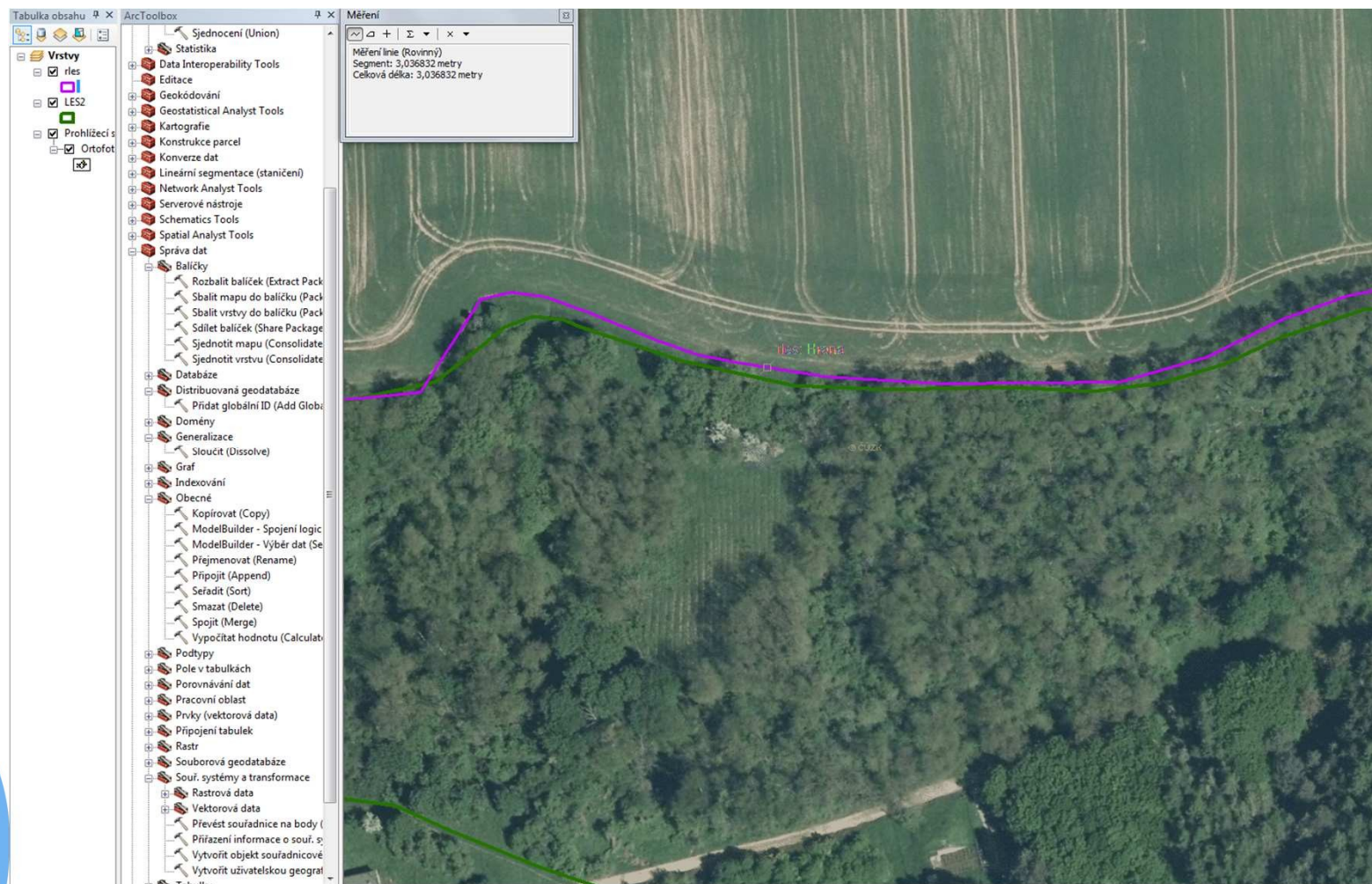


# Data capture

- Photointerpretation of orthoimagery – LPIS operators
- Notification of the farmers (catch crops,...)
- On the spot checks
- National mapping agency – tolerance between data sources and LPIS data?
  - buffer strips along water courses,
  - strips along forest edges



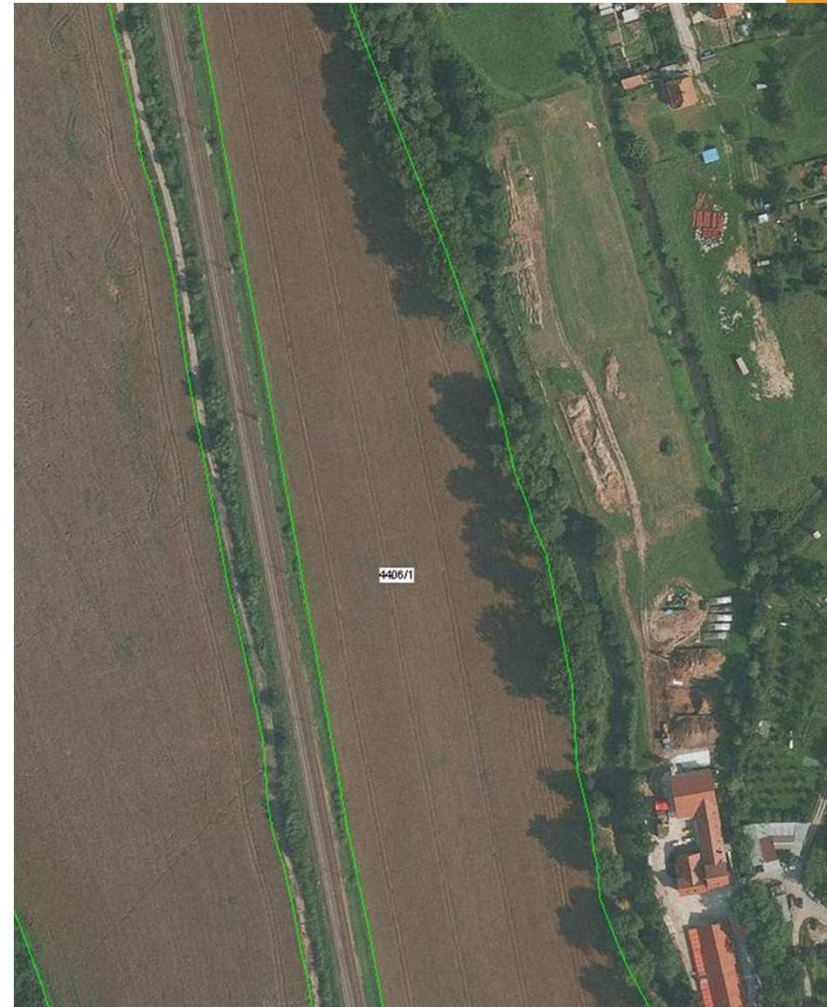
# Tolerances between boundaries...





# Edge of the water body – delineation by LPIS operators?

- Edge of the water body is usually covered by tree canopy -> accurate delineation based on photo interpretation is almost impossible.



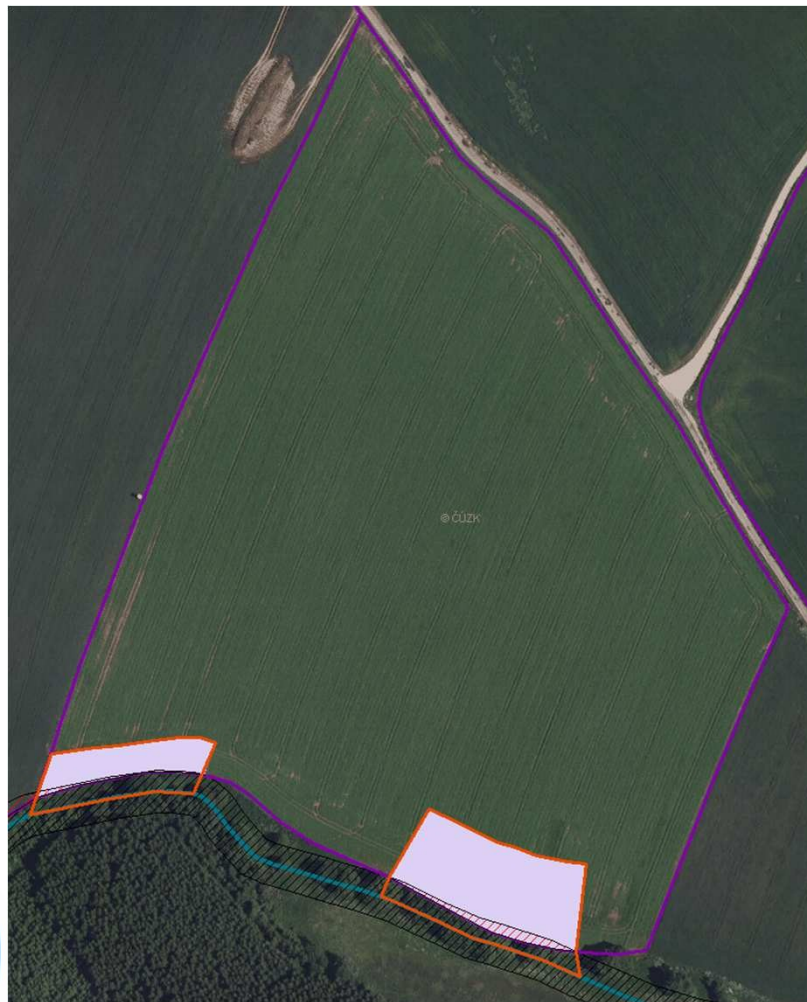
# Strips along water courses - 10 m buffer



MINISTRY OF AGRICULTURE OF THE CZECH REPUBLIC



# Strips along water courses



- Black hatching – 10 m buffer (riparian vegetation)
- Orange: eligible buffer strip
- Pink: portion of the buffer strip on the arable land.



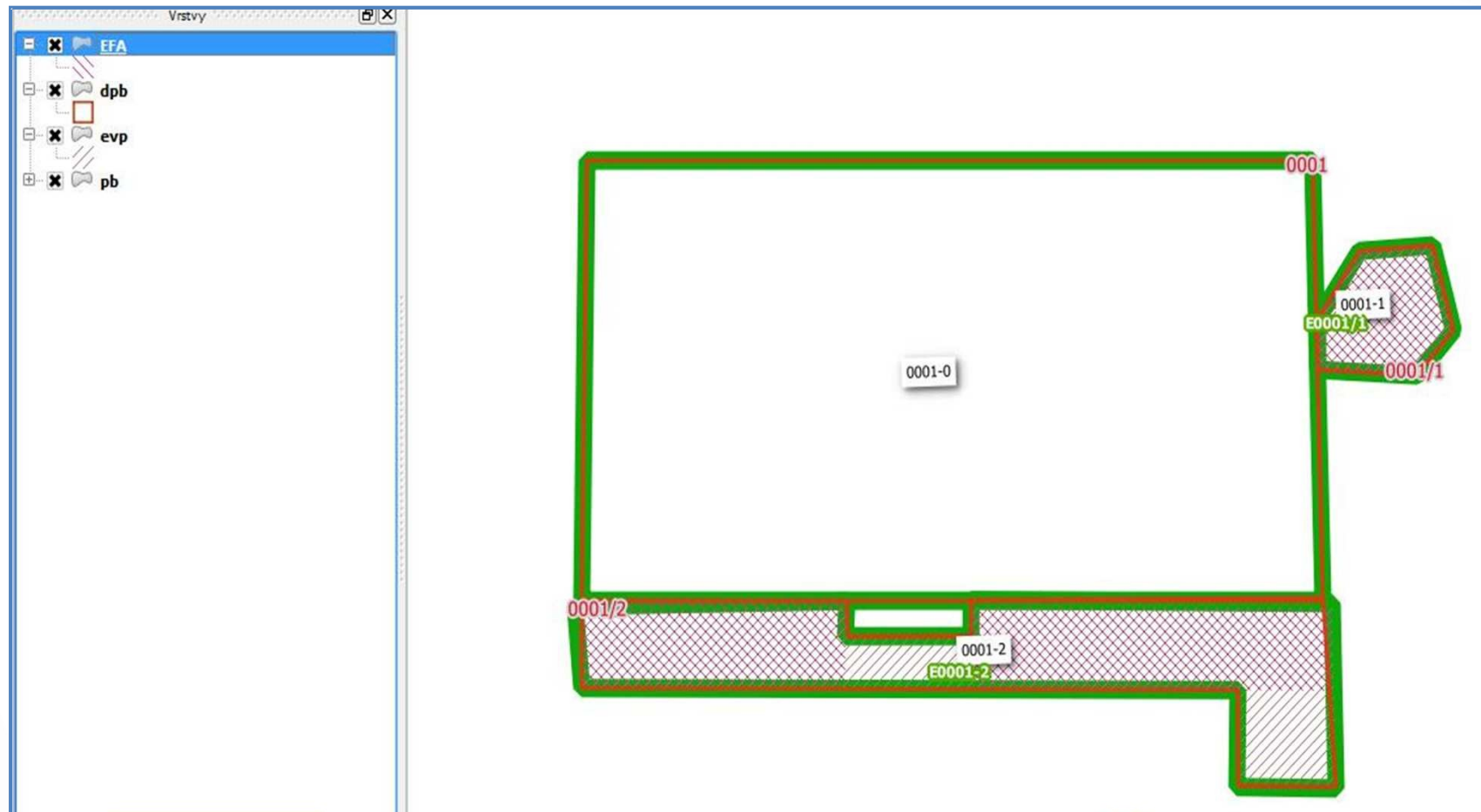
# „Adjacent“ Landscape Feature as EFA

- Adjacent to Arable land
- Assessment of adjacement:
  - nonlinear (isolated tree, group of tree, thalweg ) -> **touch**
  - linear (hedge, trees in line, terrace, ditch) -> .....
- *Common boundary line*
- *Longest edge of the feature*
- *15 m width zone along the common boundary line (CZ)*
- *Ditch: 6 m rule*



# CZ LPIS – adjacent landscape features as EFA

- Topology checks!!!
- Long side: common boundaries vs. perimeter



## Data maintenance

- New orthoimagery -> update (CZ every 2 years)
- Farmer's notification
- On the spot check

## Reference system

- Coordinate reference system: S-JTSK (EPSG: 102067)

