

Workshop challenges



www.jrc.ec.europa.eu

Serving society
Stimulating innovation
Supporting legislation

Outline

Introduction

The JRC role:

- Method
- Results
- Discussion : LCM
- Conclusions

Consequences

- Interpreting the information
- Temporal perspective

A picture says more....



Athens metro
1 operator / 3 lines / 1 airport



Tokyo subway
2 operators / 13 lines / 2 airports

Reg (EC) 1122/2009
1 DP scheme per MS
few options (LFA, coupled)
Cross-compliance

Reg (EC) 1307/2013
2 area schemes per MS (BPS + Green)
many options (YFS, SFS, RPS, NC, coupled)
Cross-compliance + greening

The JRC approach - Method

Requirement analysis of

- Basic Acts (in particular 2013/1306 (HZR) -2013/1307 (DPR))
- Delegated Acts (version inter-service consultations)

Activities:

- Decomposition of texts
- Resolution of references
- Identification of individual requirements on AREA + LAND
(who what where when?)
- Aggregation into packages and use cases
- Flavoring with "best GIS practice" and sector experience
- Build UML model

The procedure step by step

Class: ReferenceParcels

General | Details | Require | Constraints | Links | Scenario | Files | Tagging

Name: **ReferenceParcels**

Stereotype: **FeatureType** ☒ Abstract

Author: **kucanas** Status: **Proposed**

Scope: **Public** Complexity: **Easy**

Alias: **Reference Parcels** Language: **cnone**

Persistence: **1.0** Keywords:

Phase: **1.0** Version: **1.0** **Advanced**

Notes:

B U I A E E x *

Means a geographically delimited area retaining a unique identification as registered in the identification system for agricultural parcels referred to in Article 70 of Regulation (EU) No 1306/2013.

Basic spatial unit for the administration and geographical localization of agricultural parcels. May contain one or more declared agricultural parcels in IACS and may be cultivated by one or more farmers (or producers association). Does not necessarily cover a territory nationwide, but overlaps are not allowed. Subtypes: CadParcel, AgrParcel, FarBlock, FlyBlock, TopoBlock and MixedParcelType.

Rules:

1. Potential agricultural area.
2. Dissolved agricultural area.
3. Limited by natural, artificial visible (identifiable - locatable, verifiable, controllable) boundaries.
4. Reference parcel - a continuous area of agricultural land (production block) grouping together a number of neighboring parcels.

OK Cancel Apply Help

Outputs

Internal non-documents of area/land:

- “Basic Acts for Dummies”: synopsis and TOC of articles
- “Delegated Acts for Dummies”: compilation of direct and indirect requirements

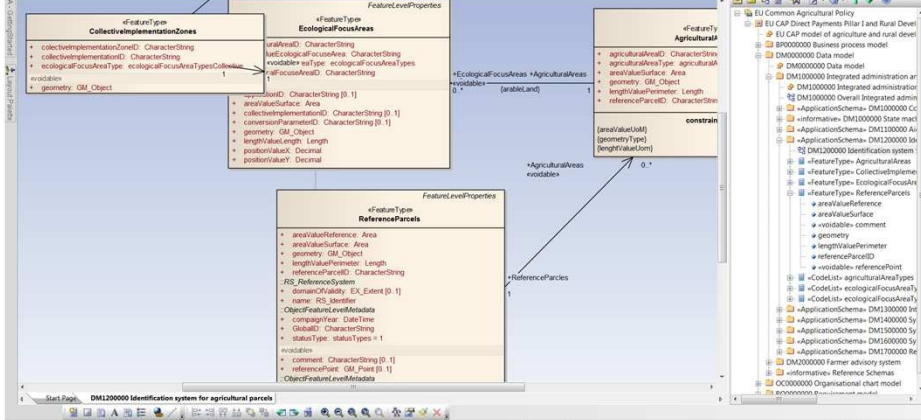
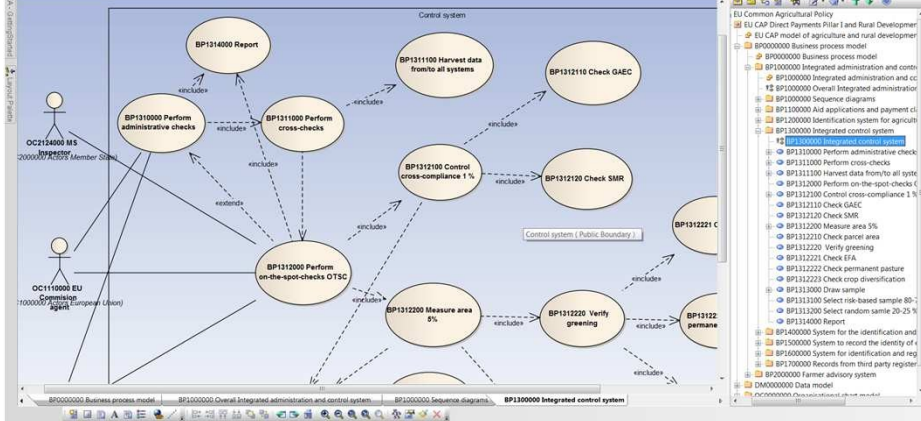
Draft LPIS Core Model in Unified Modeling Language

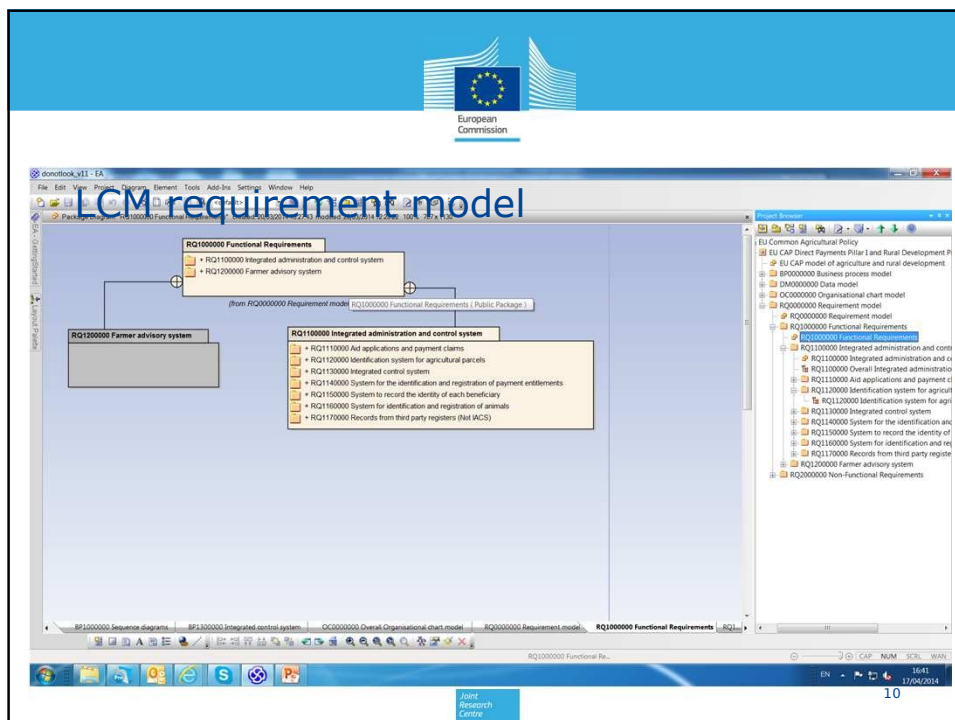
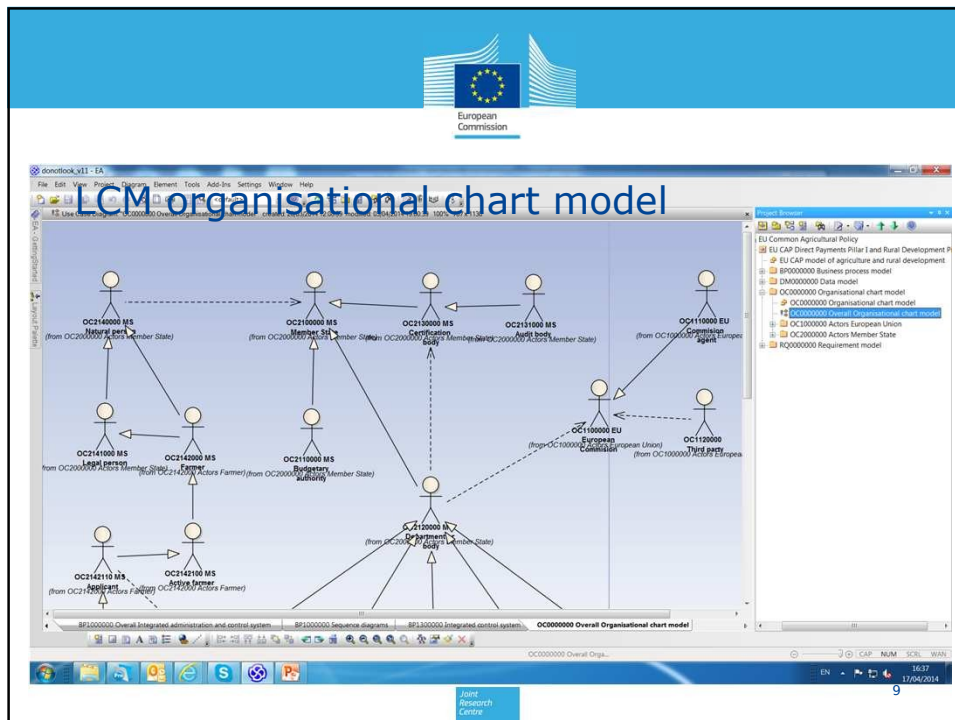
4 models framed inside IACS

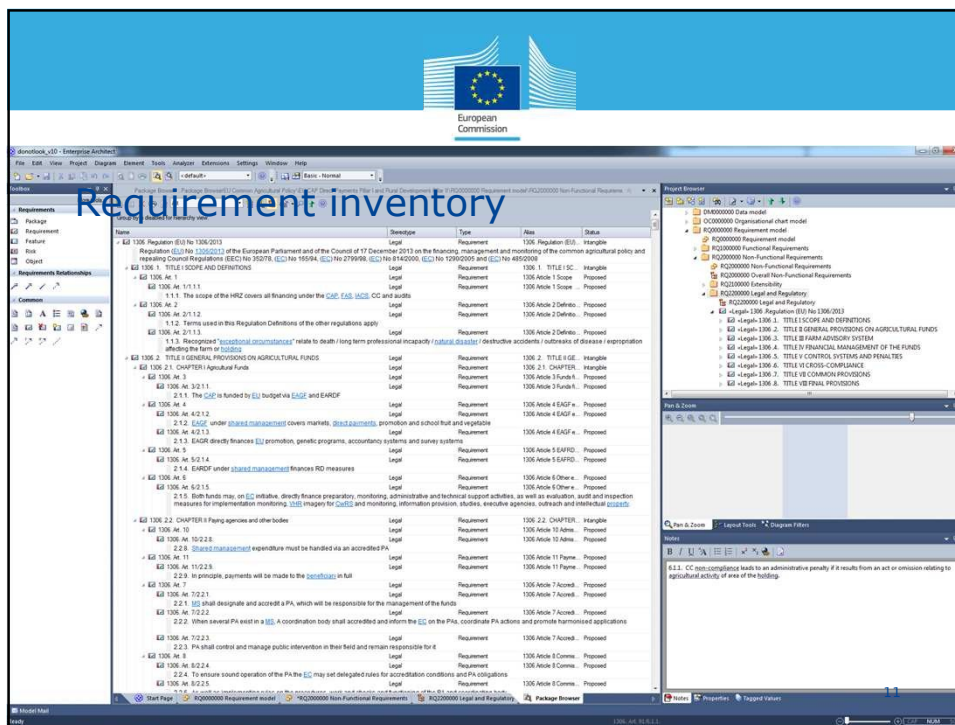
- Business processes guidance (e.g. LPIS upkeep)
- Data MTS
- Organisational chart documentation
- Requirements documentation


Enterprise Architect file 2007: 16.178 kB 2014: 39.154 kB

LCM business process model










European Commission

Conclusions

LCM acts as a metro map to answer “how to...?” or “how can...?”

LCM IS NOT AN ALTERNATIVE FOR THE REGULATIONS!

- Focus on all LAND and AREA aspects: many elements are taken from the Regulations’ requirements functional requirement
- Some elements are (in the view of JRC) best practice non-functional requirements
- Basis for JRC technical guidance (e.g. MTS, ETS)
- Provides a coherent technical documentation set


12

Consequence: interpreting the EC slides



DGAGRI

- Policy objectives (=what?)
- Lawyer-linguist language
- Legal interpretation
- Regulation/Title/Article focus
- Strict CAP perspective
- ≈ formal EC position
bound by CAP legislation



DGJRC

- Methodologies (=how?)
- Modeling language (UML)
- Technical translation
- IT System approach
- Views to tangent domains
- ≈ best practice guidance
with discussion topics



Please interpret such information appropriately

Timeframe implications

Immediate (≈ this 2014 workshop focus) :

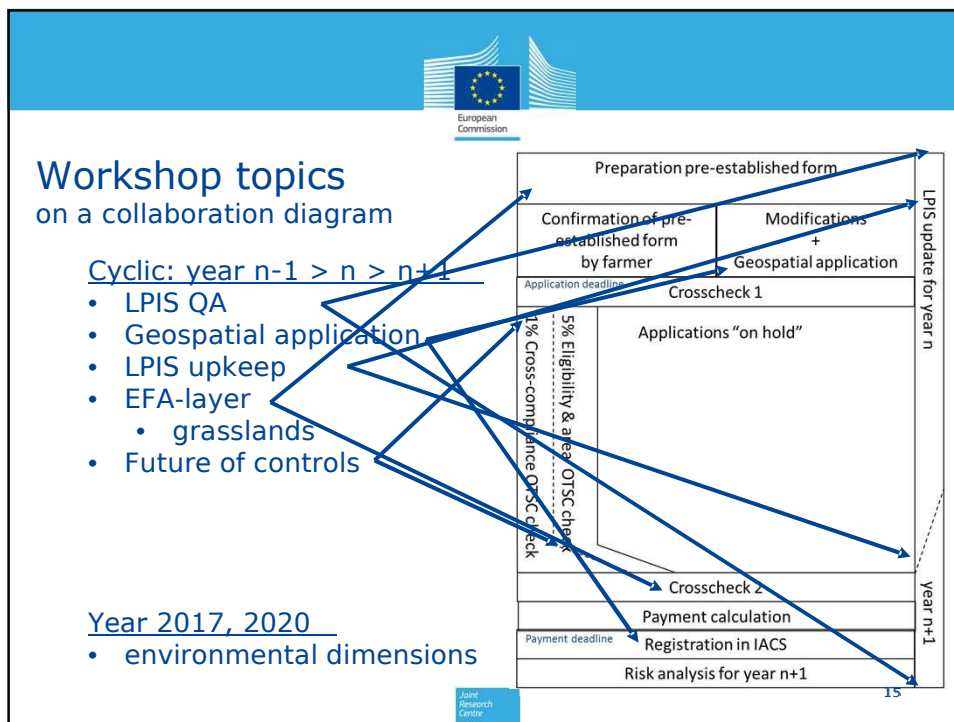
- LPIS + IACS upgrade
 - Design issues
 - Additional data capture
 - Upgrade of application/control process
- LPIS update activities
- Setup of the 2015 controls

Mid-term:

- Intermediate review of the national/regional choices
- Effect reporting with focus on the CAP objectives
- If applicable: conversion of SAPS

(Very) long-term:

- 2020




European Commission

Many new faces

LPIS WS = technical stuff, maybe some background implied...

Do not hesitate to ask questions:

- to your technical colleagues
- at opportunities after presentations
- during coffee/lunch breaks

16


Joint Research Centre



Enjoy the workshop!

Joint
Research
Centre