



Work programme GTCAP 2014

Guidance and Tools for the CAP







New CAP legislation
New structure in DG Agri&RD
New structure IES-JRC
New Director General JRC

Work programme 2014 already decided but maybe some turbulences ...



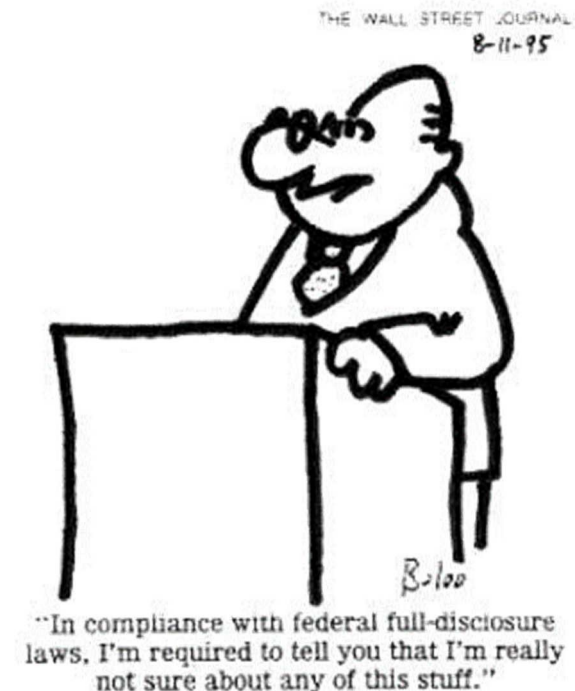


THE MISSION

ID: 1

GTCAP workshops and reporting

Organize technical workshops and training sessions with relevant MS authorities covering the different themes related to the CAP implementation (GTCAP conference, OTS checks, Land eligibility, Cross Compliance and Greening...)



THE MISSION

ID: 2

Reference manual for measurements

Production on methods and guidelines for MS in order to ensure consistent and robust measurements (using GNSS, imagery, + other tools ...)

Intermediate report in 2014

Report supervised by DG AGRI

“Shit ton” is my favorite unit of measurement.



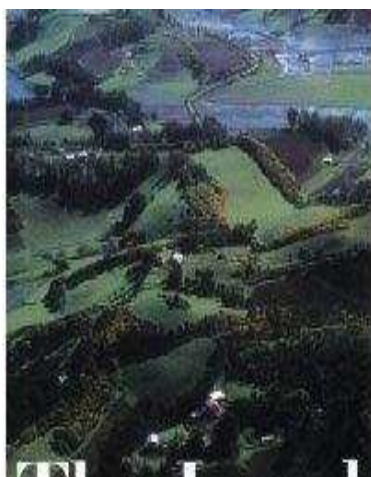
THE MISSION

ID: 3

Revised LPIS data model

LPIS model and LPIS QA guidelines will have to be adapted and updated to comply with new land eligibility rules and the different CAP schemes to manage.

Provision of guidelines in mid-year



Joint
Research
Centre



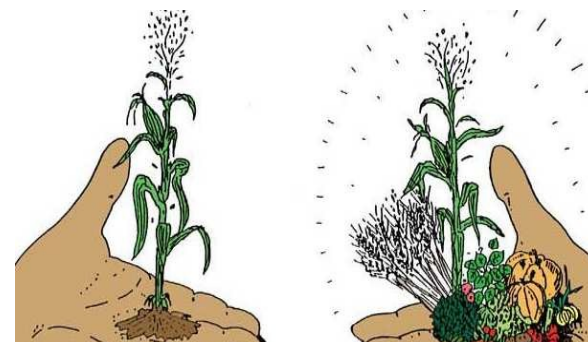
THE MISSION

ID: 4

Guidelines for the components of the CAP Greening

Provide guidelines on the characterisation, quantification, management and On-The-Spot Checks of the Greening obligations (Ecological Focused Areas, Permanent Grassland protection, Crop diversification)

Provisional guidelines in 2014



THE MISSION

ID: 5

Training activities and technical support

Provide technical support during Audit activities.

Perform training sessions to build capacity for Member States and Candidate Countries administrations to establish their strategy for implementing the different components of the new CAP.

Audit missions, technical missions, bilateral discussions

**I CAN
EXPLAIN
IT TO YOU BUT I CAN'T
UNDERSTAND
IT FOR YOU!**

Joint
Research
Centre



Something wrong here !!
Twenty-eight things are wrong
Can you spot them?

THE MISSION

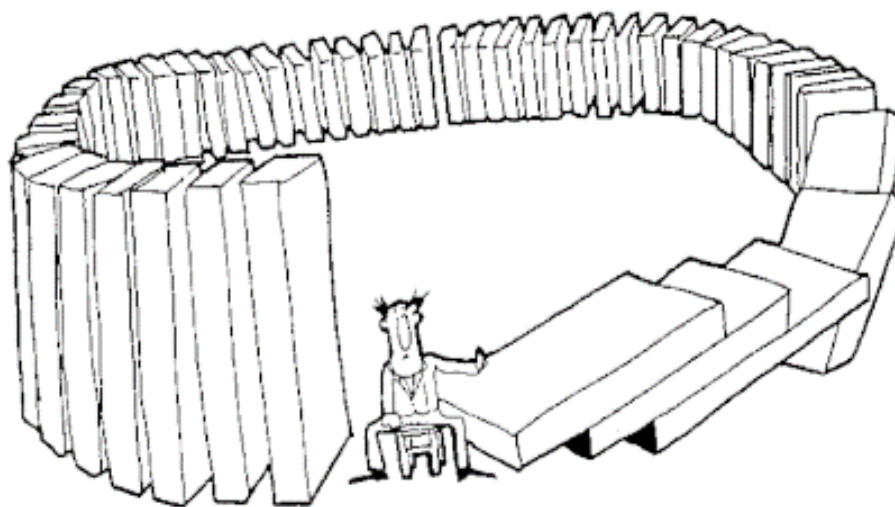
ID: 5

R&D in the field of Impact Assessments of the CAP

Pursue R&D activities in the field of monitoring and evaluating of greening and other CAP measures in order to help MS reporting on Impact Assessments

**In complex systems, cause and effect
are often distant in time and space**

Progress report in 2014





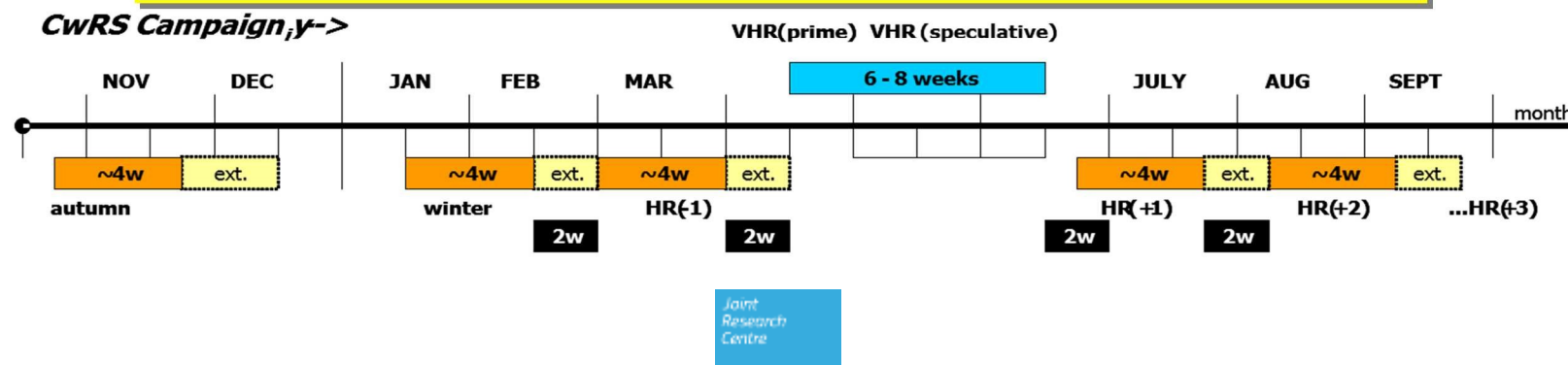
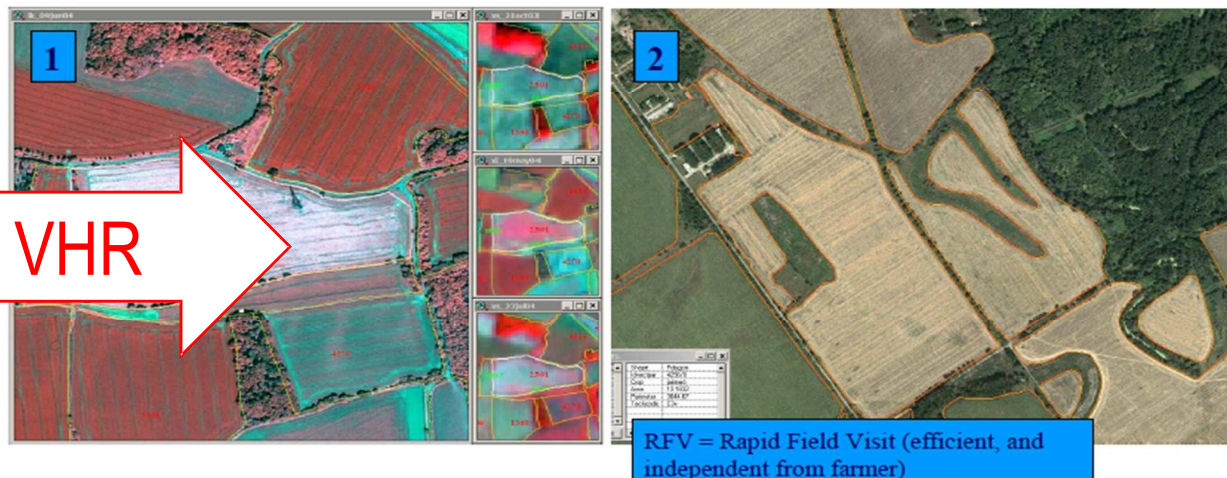
Studies:

- Quality check of CwRS work
- Quality check of satellite imagery (with SimsEC)
- Sample selection
- Work on "3% threshold LPIS"

Remote Sensing OTS checks

1- The standard scenario: 1 Very High Res. + n High Resolution images.

2- The Very High Res. + Rapid Field Visit scenario.





Hope we will have fun anyway 😊

© Original Artist
Reproduction rights obtainable from
www.CartoonStock.com



"If bees are so busy, how come
they take time to stop and smell
the flowers?"