



Summary Statistics of the 2007 Campaign

Contents

Number of applications, OTS controls, RS controls

Importance of different schemes Follow-up results

Results of group and dossier diagnoses

Summary

24 MS used remote sensing in 2007

Not AT, FI and LU

27 national or regional administrations

Belgium, Spain and UK – 2 each

31 “contractors” involved

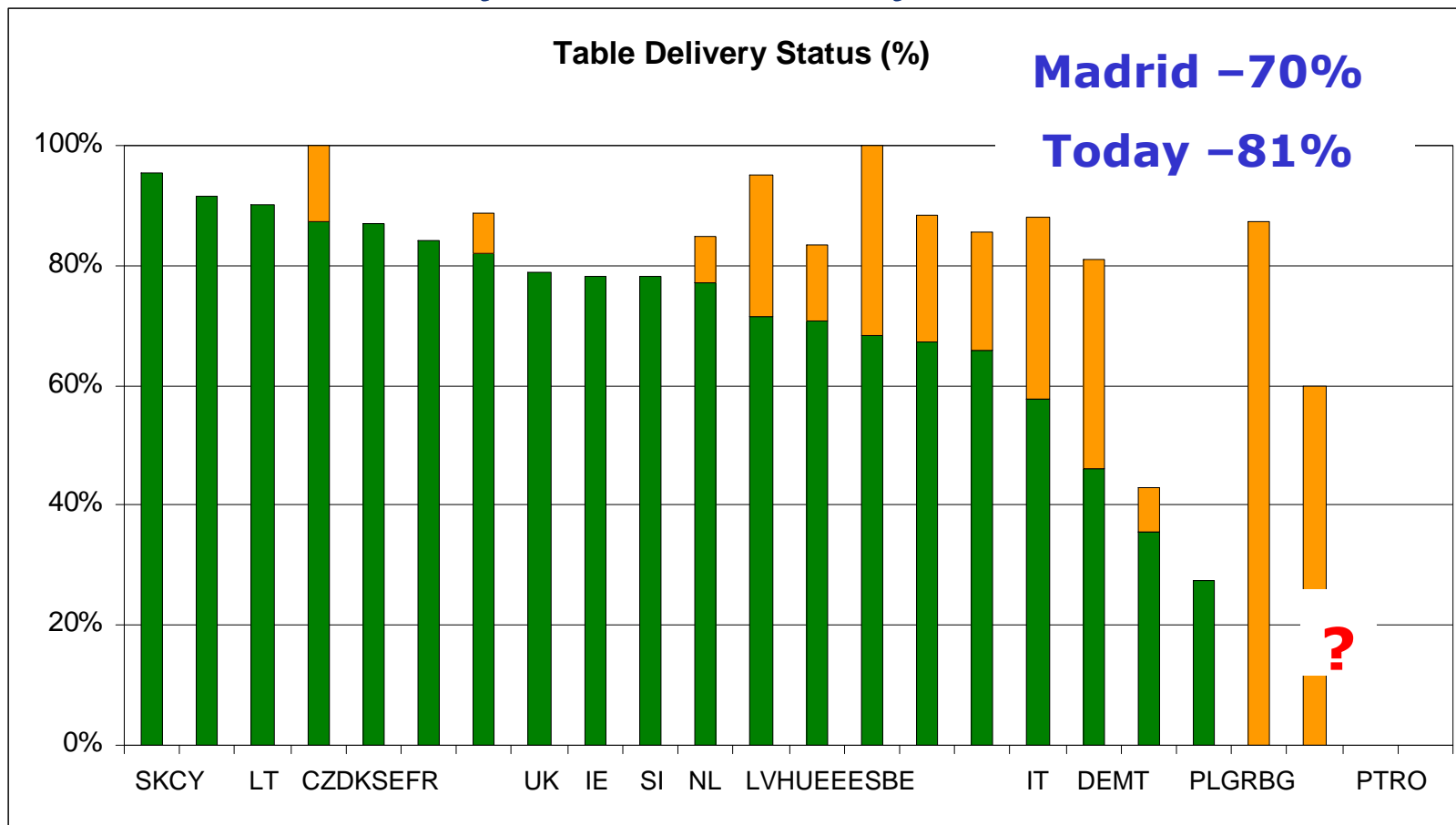
13 are state or semi-state agencies

1 contractor / MS except in

BE, DE, ES, RO (2 each), FR (2 + AUP)

England and Wales (1)

Delivery of Summary Statistics



All statistics reported by MS

Number of controls

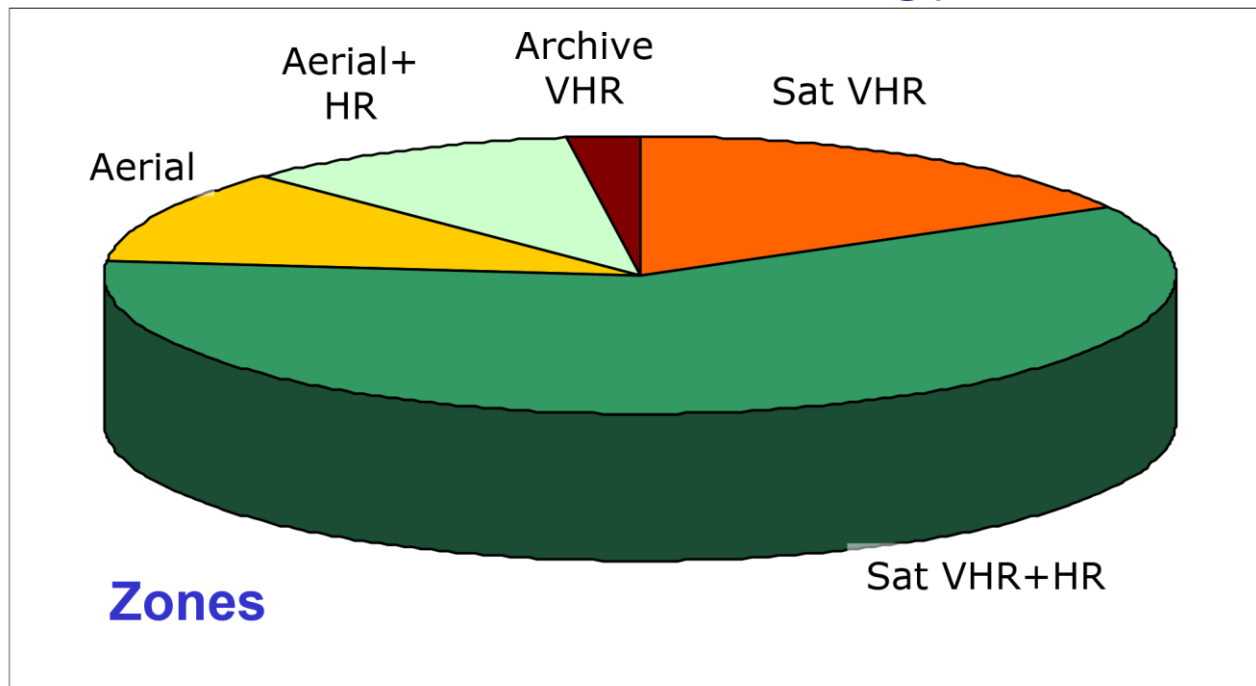
8.8 million applications (including AT, FI & LU)

598,000 controlled OTS – average 6.8%

304,000 controlled with remote sensing

- average 52%
- 7 MS \geq 80%, 4 \leq 20%
- 4.2 million ha
- 314 RS zones

CwRS Methodology

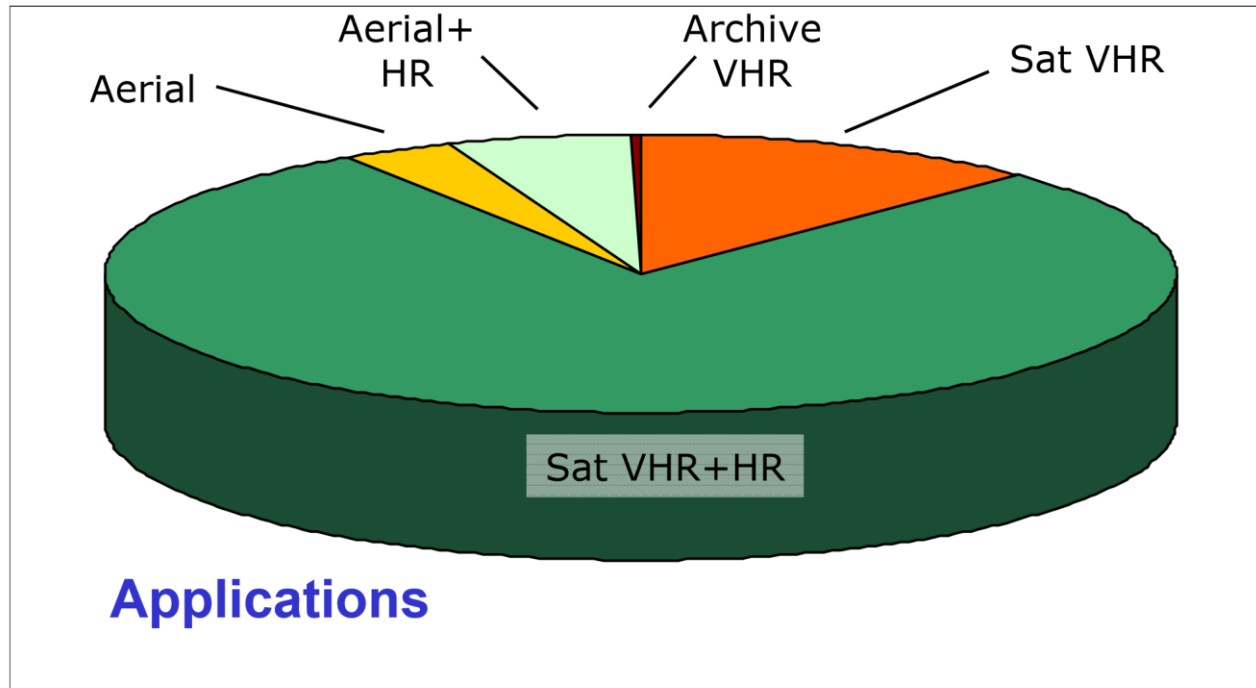


70% | **60% satellite VHR + HR**
10% aerial VHR + HR

28% | **17% satellite VHR only**
11% aerial VHR only

2% archive VHR (+/- HR)

CwRS Methodology

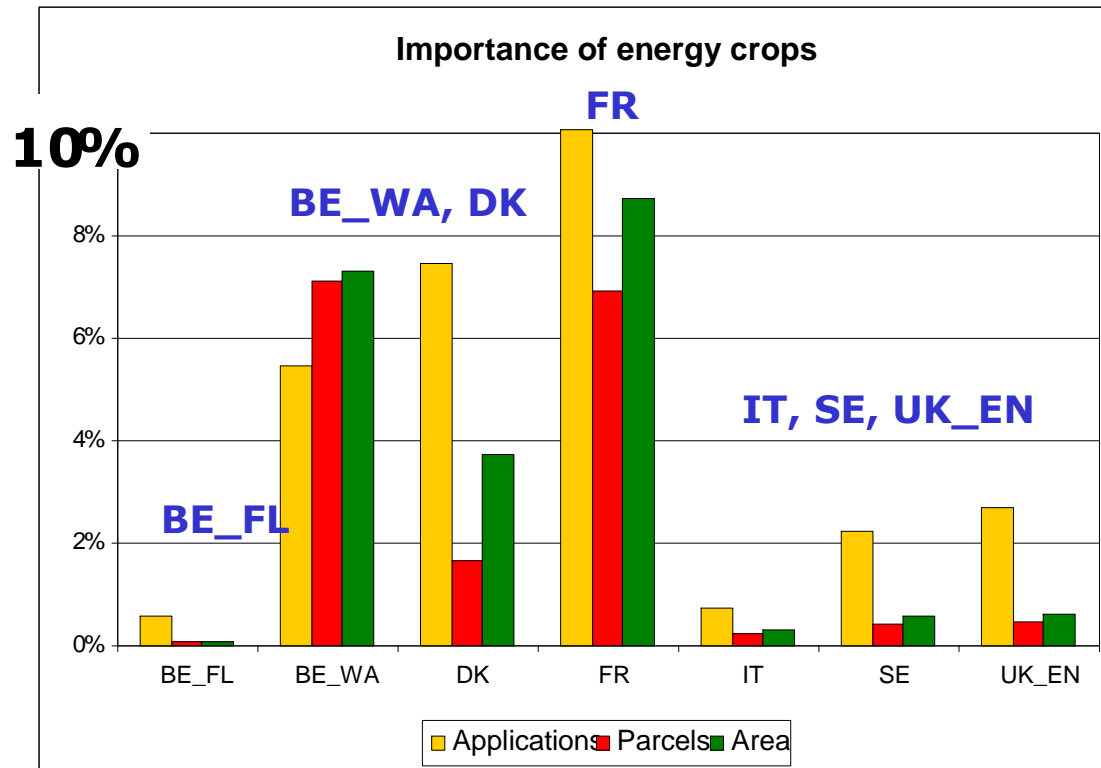


84% | **79% satellite VHR + HR**
5% aerial VHR + HR

16% | **13% satellite VHR only**
3% aerial VHR only

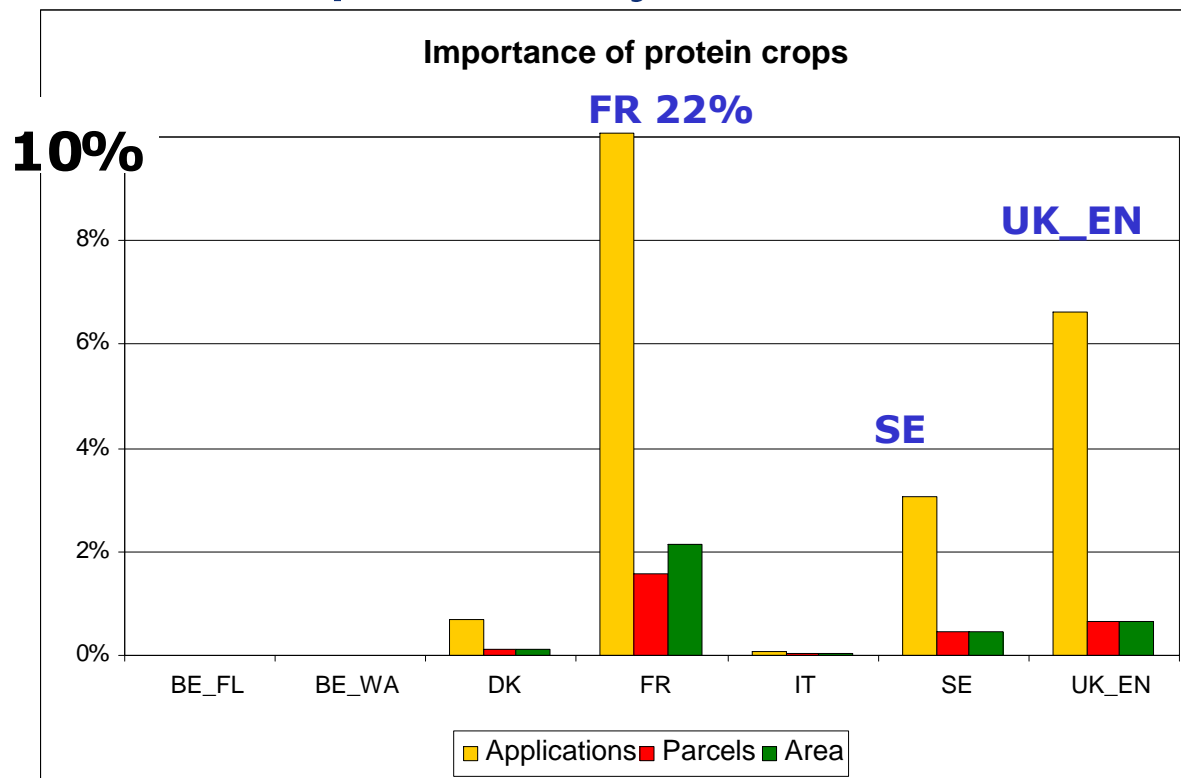
<1% archive VHR (+/- HR)

“Coupled” Payments in SPS (1)



No energy crops in IE, NL QC zones

“Coupled” Payments in SPS (2)



No protein crops in BE, IE, NL QC zones

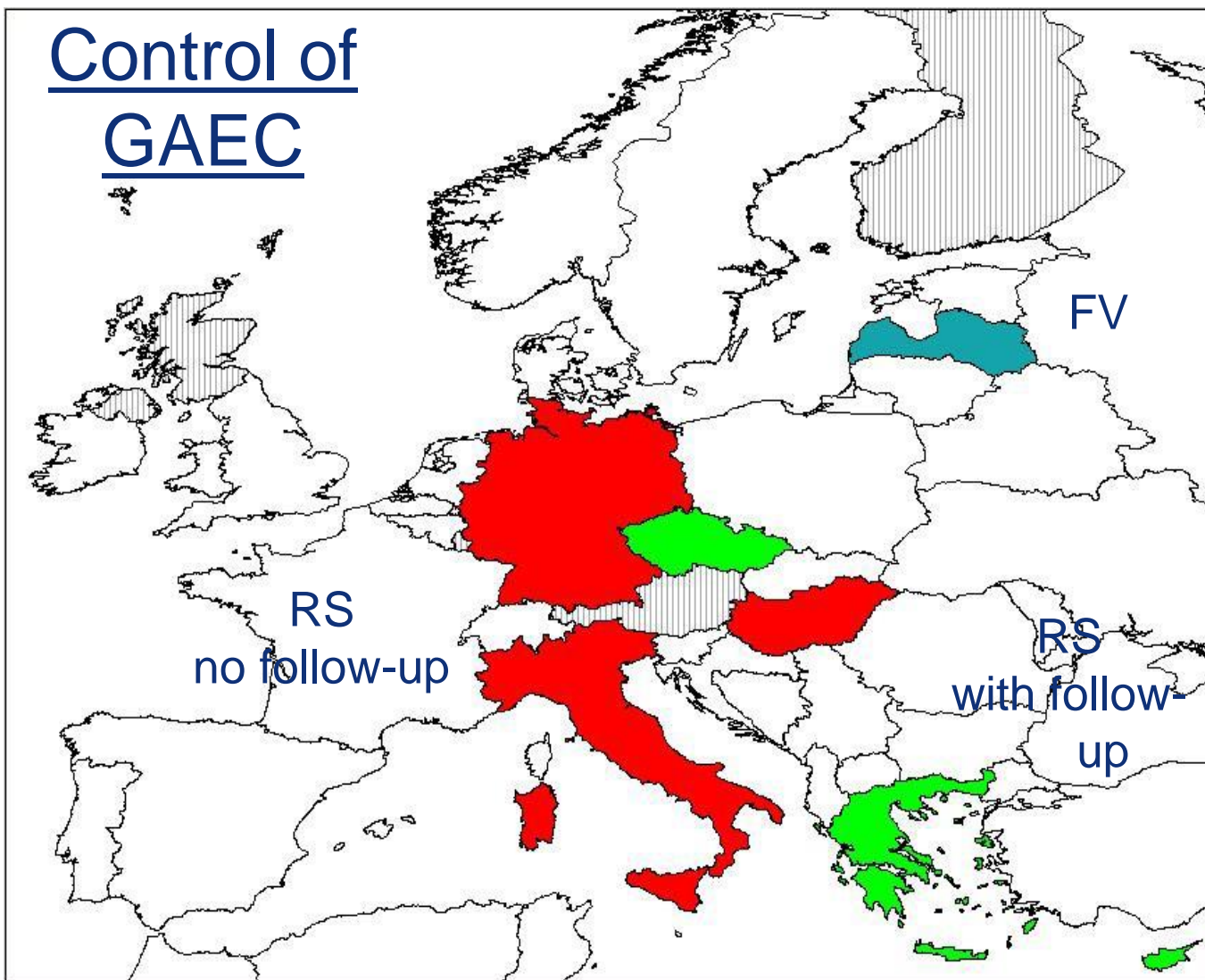
Mediterranean crops

Only 2 QC zones delivered (ES, IT)

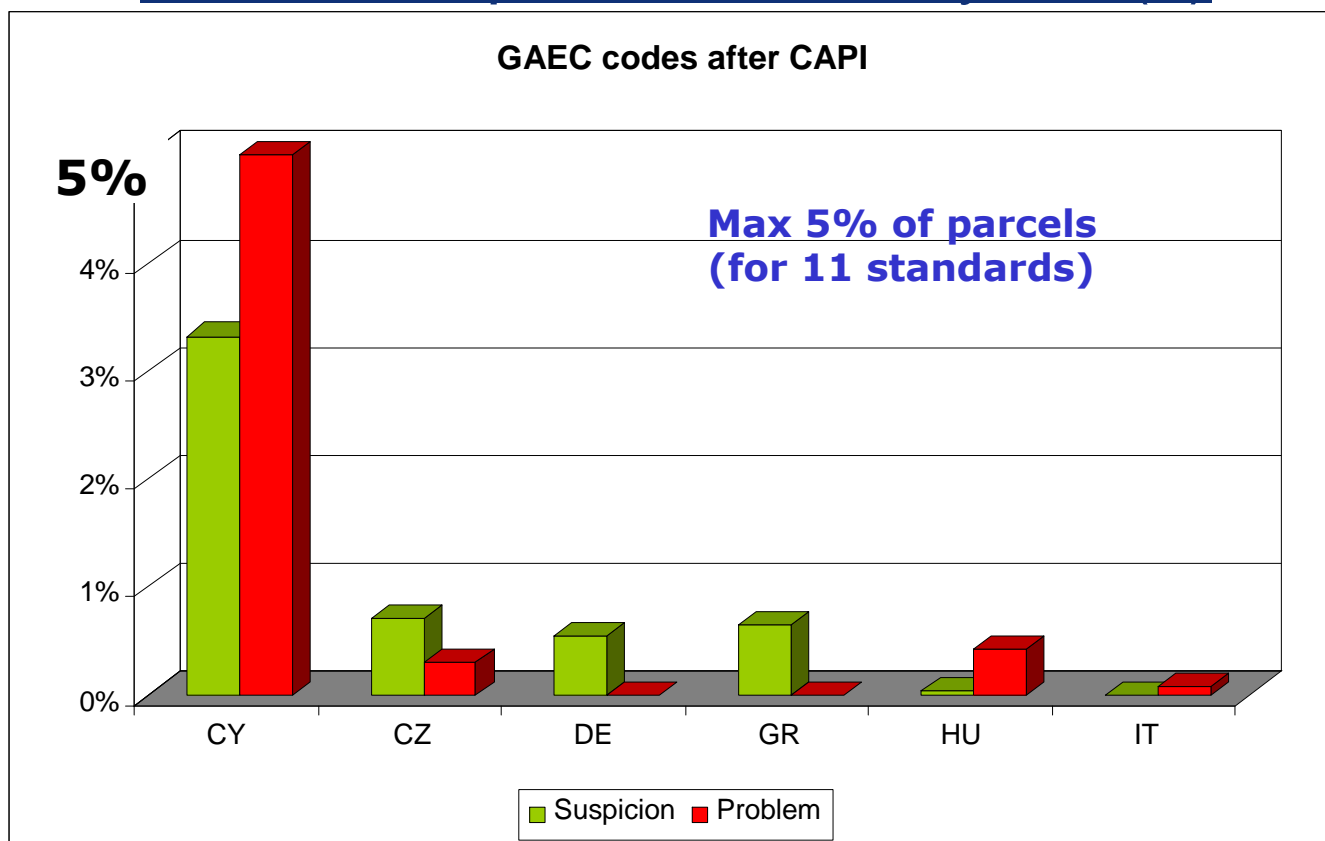
Durum wheat in ES – 1 application / 1 parcel

Durum wheat in IT - < 1% applications / parcels
No cotton, rice or tobacco

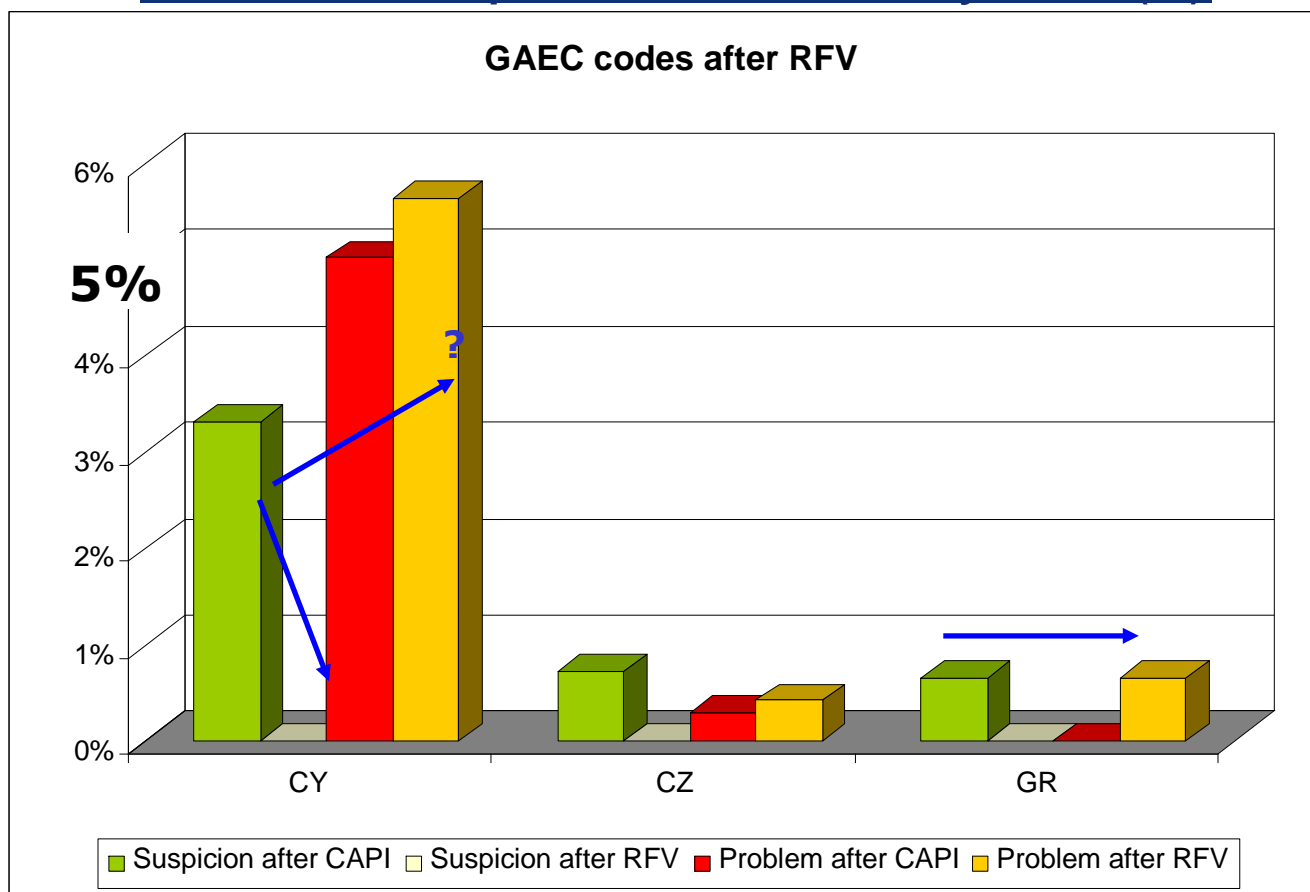
Control of GAEC



GAEC sample controlled by RS (1)

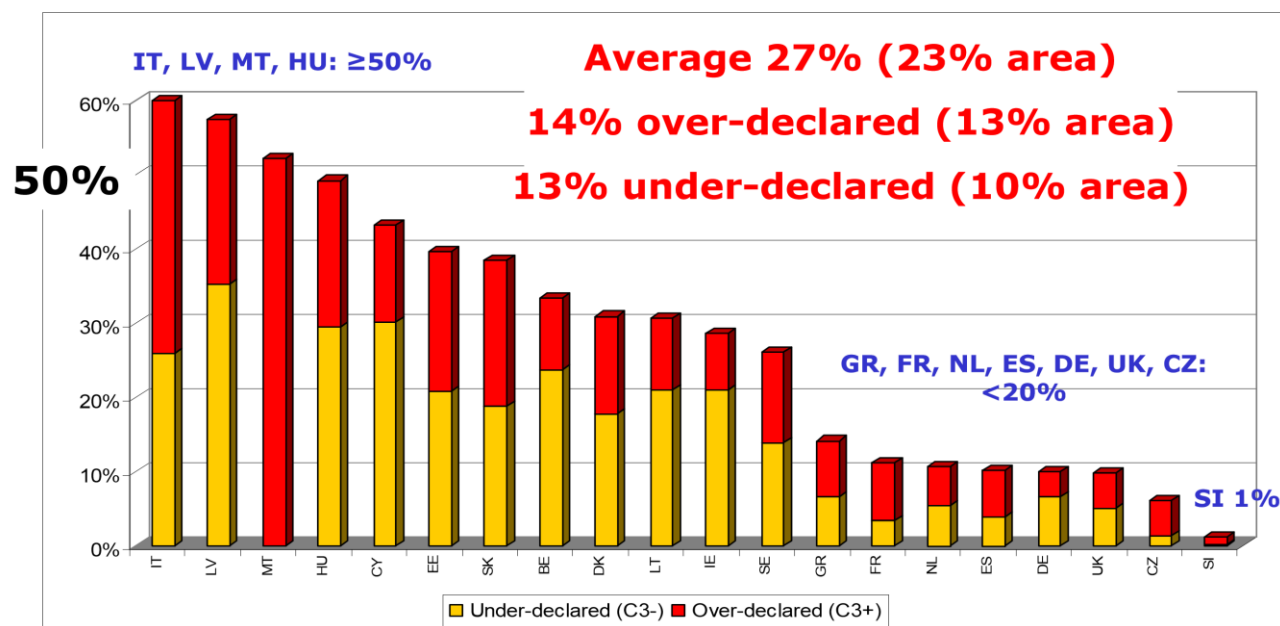


GAEC sample controlled by RS (2)



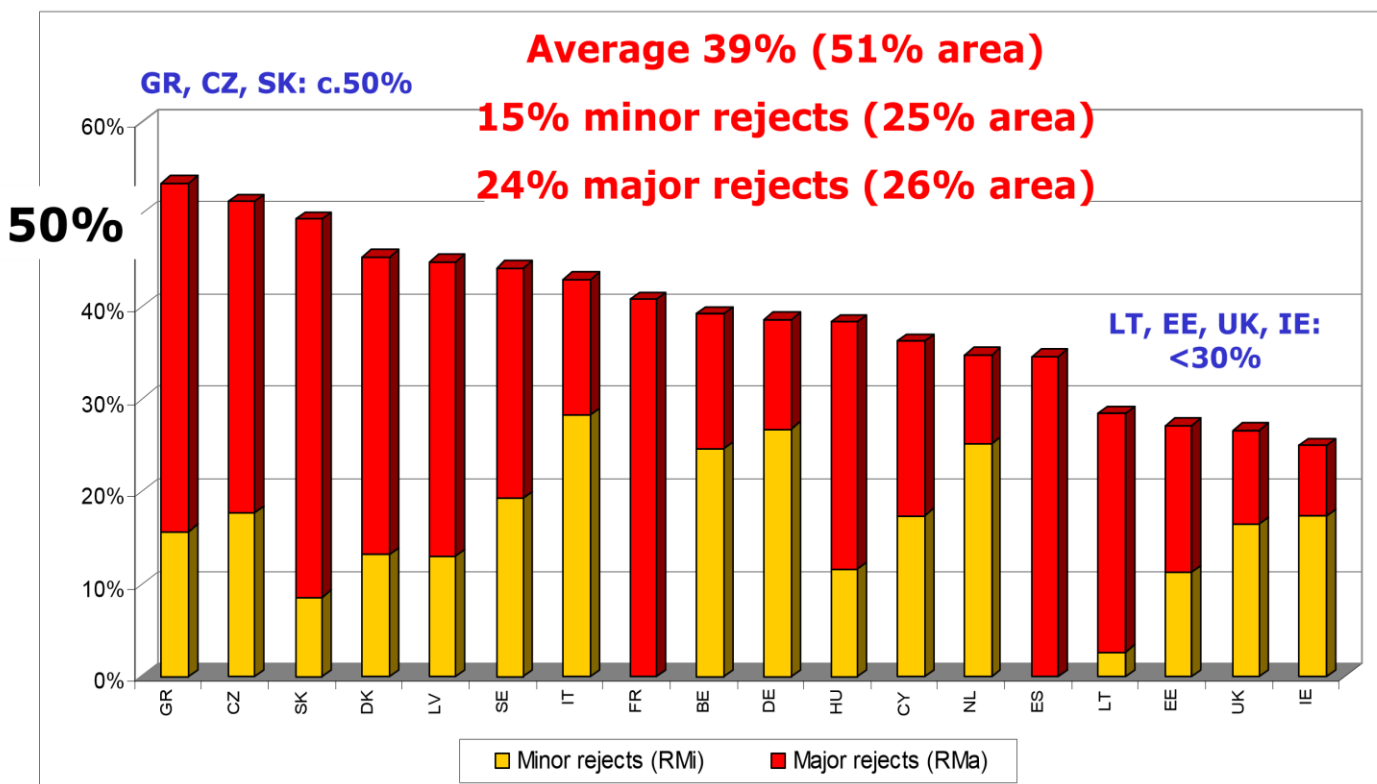
Analysis of Parcel Tolerance

Percentage of parcels coded C3 / (C3+OK)



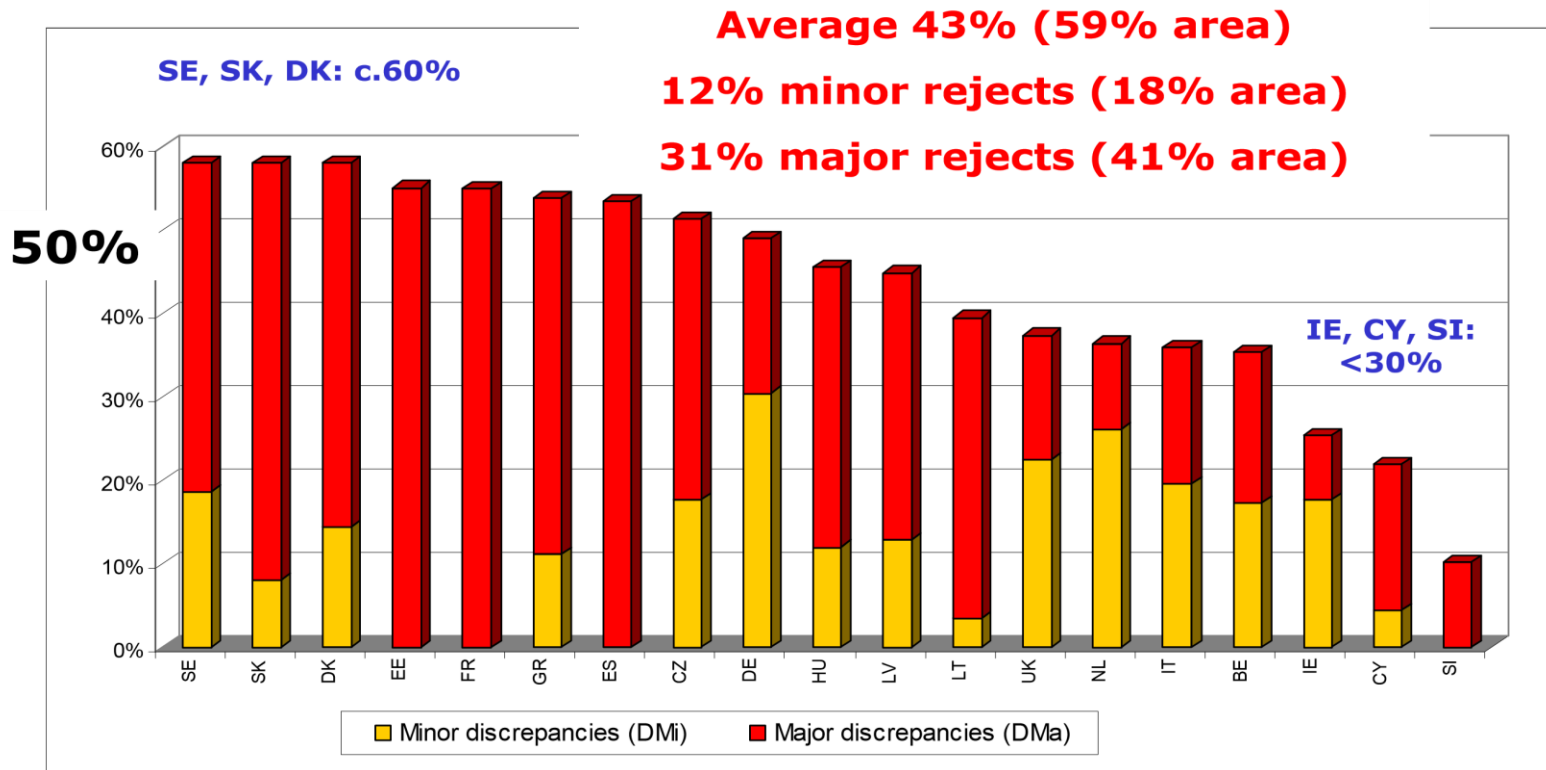
Results of Group Conformity Test

Percentage of rejected groups



Results of Dossier Conformity Test

Percentage of rejected dossiers



Follow-up results

4 MS delivered so far

CZ, EE & LV: accepted dossiers - 100% confirmed

EE: rejected dossiers - 2% accepted / 98% at least 1 group rejected

Minor rejects - Accepted - 52% IT; 32% CZ

At least 1 group recalculated – 44% IT; 68% CZ

At least 1 group penalised – LV 100%

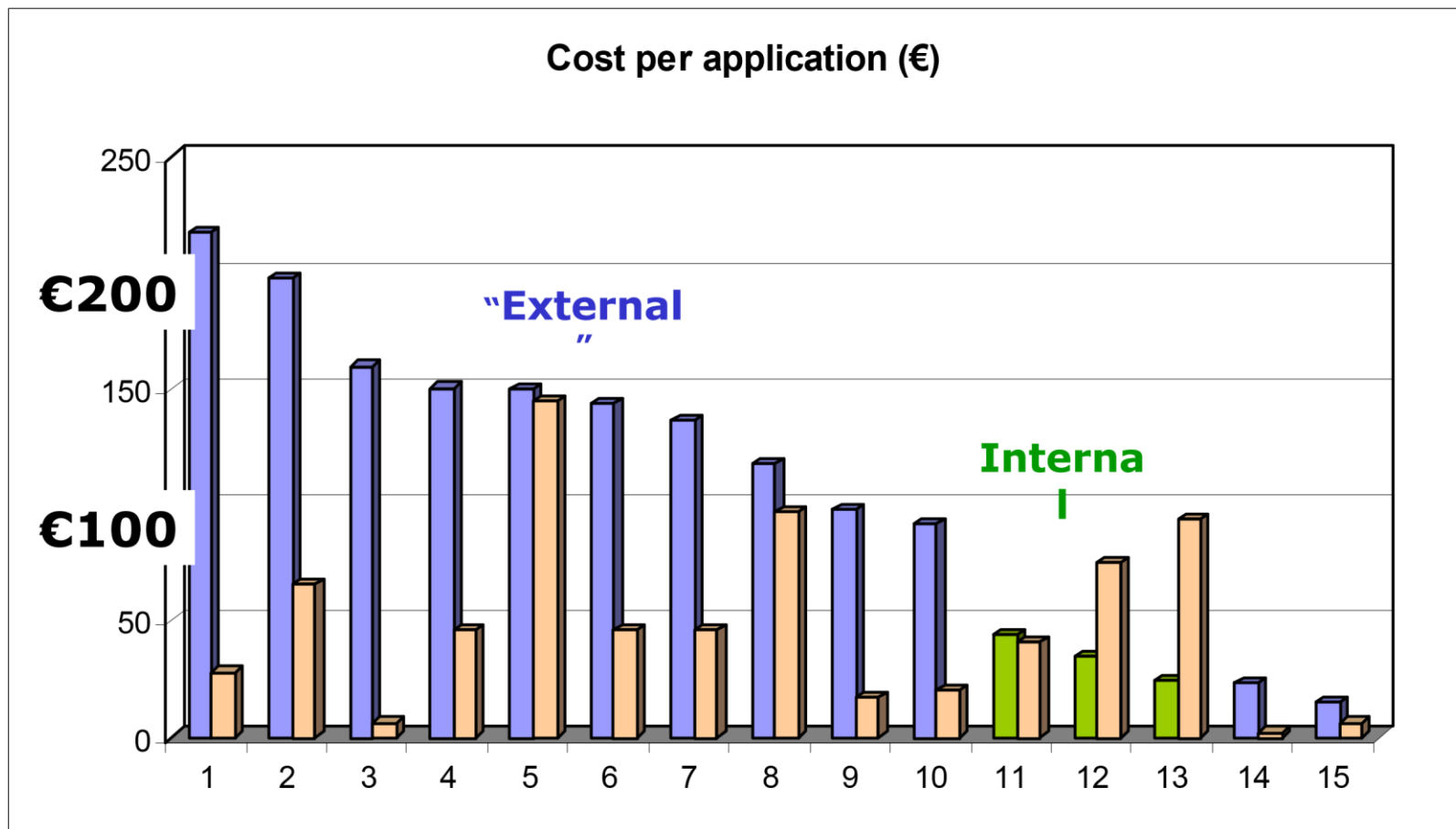
Major rejects - Accepted – 50% CZ

At least 1 group recalculated – 48% CZ

At least 1 group penalised – 78% LV; 62% IT; <1% CZ

At least 1 group rejected – 22% LV

Cost of RS Control



Thank you