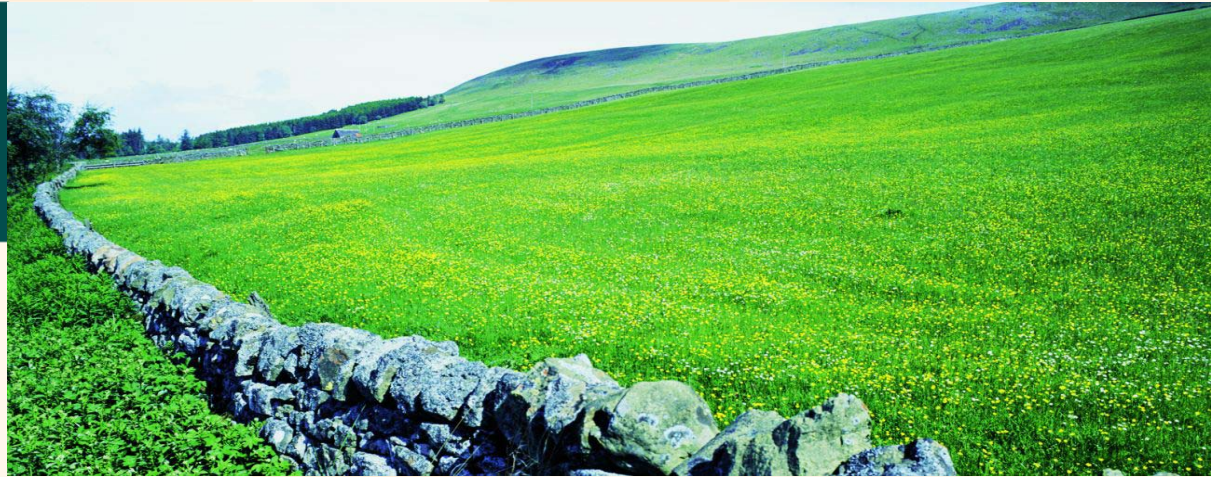




European Commission
Agriculture and Rural Development



The Farm Advisory System Questionnaire

(Art. 13-16 of Reg (EC) No 1782/2003)

Inge Van Oost

EC - DG Agriculture and Rural Development

Unit D.3 - Cross Compliance



A. Setting up the Farm Advisory System



A. Setting up the Farm Advisory System

1. From which date is the FAS operational in your country ?



A. Setting up the Farm Advisory System

2. Which are the national legal provision(s) for implementation of the FAS operational in your country?



A. Setting up the Farm Advisory System

3. How were the farmers informed on the existence and the functioning/activities of the FAS in your country? Please add the information (handbooks, leaflets, etc.) and/or the reference(s) to it.



A. Setting up the Farm Advisory System

4. Is there an authority responsible for the coordination (daily follow up) of authorities and/or private bodies which operate the FAS in your country? If yes, which one? If necessary, general and delegated power.



A. Setting up the Farm Advisory System

5. Which authority is responsible for the designation/certification of authorities and/or private bodies which operate the FAS in your country?



A. Setting up the Farm Advisory System

6. Which authority is responsible for the control of the authorities and/or private bodies which operate the FAS in your country?



A. Setting up the Farm Advisory System

7. Which farmers receive priority in the FAS in your country? How many farmers are reached per group? Please sort the groups of farmers from the highest priority (1) to the lowest priority (n). Describe the 2008 situation.



A. Setting up the Farm Advisory System

7. Which farmers receive....

- Priority until (n)
- Group of farmers (e.g. dairy farms, farmers in N vulnerable zones, etc....)
- Number of farmers/holdings reached
- Voluntary participation (Yes/No)



A. Setting up the Farm Advisory System

8. Please fill in the table below with the list of the designated authorities and private bodies which operate the FAS. Please specify the number of advisors per authority/body in function of the targeted field(s) of activities.

A. Setting up the Farm Advisory System

8. FAS operating bodies

- Name of the FAS operating body
- Status (e.g. private body, regional authority, etc.)
- Geographic area of activities (e.g. region X, whole MS, etc...)
- Field of activities (e.g. SMR 1 to 5, economic farm performance, GAEC standard 7 to 11, support for making aid applications, etc.)
- Number of advisors (in case of part time advisors: note the number of full time equivalents)

A. Setting up the Farm Advisory System

9. Describe the methods used to provide advice to farmers. Please fill the table below.

- Type of approach
- Field of activities covered (e.g. SMR 1 to 5, economic farm performance, GAEC standard 7 to 11, support for making aid applications, etc...)
- Provided by (which advisory body (ies))

A. Setting up the Farm Advisory System

9. Describe the methods used to provide advice to farmers.

- Type of approach
 1. One to one on the farm
 2. One to one outside the farm (e.g. consultation/sitting day of advisors in each region, etc...)
 3. Telephone helpdesk
 4. Small group advice on the farm
 5. Small group advice outside the farm

A. Setting up the Farm Advisory System

9. Describe the methods used to provide advice to farmers.

- Type of approach
 5. Advice by way of internet (general information)
 7. Advice via website tool, tailored to individual questions of farmers
 8. Publication (paper copies)
 9. Others, please specify the type of approach used
 - 10.(...)

A. Setting up the Farm Advisory System

10. Describe the way use of the FAS is financed in 2008. Please fill the table below.

Funding for the use of the FAS by farmers (global figures in Euro)

- Budget spent per year dedicated to the use of FAS by farmers per type of approach as cited in question 9
- Total amount per subtype of advisory service
- Of which national funding (specify if necessary e.g. for region X, for the whole MS, etc...)

A. Setting up the Farm Advisory System

10. Describe the way use of the FAS is financed in 2008. Please fill the table below.

Funding for the use of the FAS by farmers (global figures in Euro)

- Of which European Community funding (specify type of funding e.g. Rural Development Programme, EFRO, CMO Fruit and vegetable producers organisations, etc...)
- Of which private funding (specify who is funding e.g. % paid by the farmer, % paid by the cooperative, etc...)



B. Output of the farm advisory system (FAS)



B. Output of the farm advisory system (FAS)

11. How were the authorities and private bodies that are responsible for the FAS designated/certified?

- a) Sum up the selection criteria used and their relative weight (e.g. staff qualification, administrative and technical facilities, experience, reliability, etc...)



B. Output of the farm advisory system (FAS)

11. How were the authorities and private bodies that are responsible for the FAS designated/certified?

b) Which is the minimum level of education for an advisor in the FAS?

- 1) Secondary school
- 2) Bachelor level
- 3) Master level

B. Output of the farm advisory system (FAS)

11. How were the authorities and private bodies that are responsible for the FAS designated/certified?

- c) Describe the selection procedure (e.g. tender system,...)?
- d) How do advisors have to demonstrate their competency ?
- e) Which courses are obligatory for advisors before being designated/certified?

B. Output of the farm advisory system (FAS)

11. How were the authorities and private bodies that are responsible for the FAS designated/certified?

- f) Describe the additional trainings organised in order to update designated/certified advisors as regards new or changing cross compliance requirements, for instance concerning the content (courses, publications, newsletters, website for advisors,...), minimum number of hours of training to be attended per year, frequency of compulsory tests to update certification,...

B. Output of the farm advisory system (FAS)

12. Describe the output of the methods used to provide advice to farmers.

Methods used to provide advice to farmers

- Approach*
- Field of activities covered (e.g. SMR 1 to 5, economic farm performance, GAEC standard 7 to 11, support for making aid applications, etc.)

*For approach types: see question 9

B. Output of the farm advisory system (FAS)

12. Describe the output of the methods used to provide advice to farmers.

Methods used to provide advice to farmers

- Provided by (which advisory body (ies))
- Farmers reached (e.g. per region X, whole MS, etc...)
- Cost for the farmer (e.g. free of charge, totally paid by the farmer, x % paid by the farmer + x% paid by the RD programme, etc...)



B. Output of the farm advisory system (FAS)

13. Describe the administrative and practical organisation of designated authorities and private bodies within your Farm Advisory System. (contacts between the FAS advisors and the authority that coordinates the FAS? Organigram?) (To be developed...)



B. Output of the farm advisory system (FAS)

14. How do you monitor the effectiveness of the FAS? How is the quality and quantity of the given advice followed up? How frequently is this done? Do you collect feed back from farmers or from operators/advisors? Which documents serves as proof for the advisors' activities (add in annex the used documents). Which procedures are followed? Which indicators are used? (To be developed...)



C. Financing of the FAS and fas

15. Did you foresee provisions to ensure that FAS operating bodies do not disclose personal or individual information or data obtained during their advisory activity? Where? (for instance: in designation act of the farm advisory service, in contracts with advisors,...)



C. Financing of the FAS and fas

16. In which cases do FAS advisors have to inform a public authority concerning irregularities or infringements during their activities (Art. 15 of R.1782/2003)? Which authority(ies) have to be informed?



B. Output of the farm advisory system (FAS)

17. Any suggestions for other questions???



C. Financing of the subsidised farm advisory services (fas)

C. Financing of the FAS and fas

18. Describe the way the fas is financed. Please fill in the tables below.

Funding for the **use of FAS by farmers, if funded by Rural Development (art.24 of R.1698)**

- Total amount of support per farmer (per type of approach) (e.g. 1000 Euro/advisory service/farmer for one to one advice)
- % to be paid by the farmer (e.g. 40%)

C. Financing of the FAS and fas

18. Describe the way the fas is financed. Please fill in the tables below.

Funding for the **use of FAS by farmers, if funded by Rural Development (art.24 of R.1698)**

- Duration of the funding and frequency of visits per advisory service: (e.g. 2 visits per 3 year period)
- Global funding period (e.g. 2007-2013)
- Number of farmers reached

C. Financing of the FAS and fas

18. Describe the way the fas is financed. Please fill in the tables below.

Funding for the **setting up** of advisory services in your country's FAS, if funded by Rural Development (art.25 of R.1698)

- Total budget (Euro)
- Of which national funding (specify if necessary e.g. region X, whole MS, etc...)

C. Financing of the FAS and fas

18. Describe the way the fas is financed. Please fill in the tables below.

Funding for the **setting up** of advisory services in your country's FAS, if funded by Rural Development (art.25 of R.1698)

- Of which EAFRD community funding
- Of which private funding (e.g. paid by the farmer, paid by the cooperative, etc...)
- Duration of the funding



C. Financing of the FAS and fas

19. Explain the reason for the choice to support your FAS via European Community funding.



D. Problems and suggestions



D. Problems and suggestions

20. Describe eventual problems encountered during the organisation and management of the FAS.



D. Problems and suggestions

21. Which changes in the FAS do you envisage within the next 5 years? (e.g. priorities, number of farmers reached, methods to reach farmers, designation/certification of advisors, etc...)



D. Problems and suggestions

22. Which suggestions do you have as regards the legislative framework of the FAS at EU level?



D. Problems and suggestions

23. Describe eventual problems encountered during the organisation and management of the subsidised fas.



D. Problems and suggestions

24. Which changes in the subsidised fas do you envisage within the next 5 years? (e.g. priorities, number of farmers reached, methods to reach farmers, designation/certification of advisors, etc...)



D. Problems and suggestions

25. Which suggestions do you have as regards the legislative framework of the subsidised fas at EU level?



Deadline: 31 Jan 2008



Annex: List of Statutory Management Requirements (SMR)



List of Statutory Management Requirements (SMR)

Area of protection of environment

SMR 1 Conservation of wild birds

SMR 2 Protection of groundwater

SMR 3 Use of sewage sludge

SMR 4 Protection of waters against nitrates

SMR 5 Conservation of natural habitats and of wild flora and fauna



List of Statutory Management Requirements (SMR)

Area of public, animal and plant health

- SMR 6 Identification and Registration of animals
- SMR 7 Identification and Registration of bovines (ear tags, holding registers and passports)
- SMR 8 Identification and Registration of bovines and labelling of beef and beef products
- SMR 8a Identification and Registration of ovines/caprines
- SMR 9 Placing of plant protection products on the market
- SMR 10 Prohibition of certain substances in stock farming



List of Statutory Management Requirements (SMR)

Area of public, animal and plant health

SMR 11 Food law

SMR 12 Prevention, control and eradication of spongiform encephalopathies

SMR 13 Control of foot-and-mouth disease

SMR 14 Control of certain animal diseases and specific measures against swine vesicular disease

SMR 15 Control of bluetongue



List of Statutory Management Requirements (SMR)

Area of animal welfare

SMR 16 Minimum standards for the protection of calves

SMR 17 Minimum standards for the protection of pigs

SMR 18 Protection of animals kept for farming purposes



Annex: List of standards for Good Agricultural and Environmental Condition (GAEC)

List of standards for Good Agricultural and Environmental Condition (GAEC)

(a) Soil erosion

Protect soil through appropriate measures

- (GAEC 1) Minimum soil cover
- (GAEC 2) Minimum land management reflecting site-specific conditions
- (GAEC 3) Retain terraces

List of standards for Good Agricultural and Environmental Condition (GAEC)

(b) Soil organic matter

Maintain soil organic matter levels through appropriate practices

- (GAEC 4) Standards for crop rotations where applicable
- (GAEC 5) Arable stubble management



List of standards for Good Agricultural and Environmental Condition (GAEC)

(c) Soil structure

Maintain soil structure through appropriate measures

- (GAEC 6) Appropriate machinery use

List of standards for Good Agricultural and Environmental Condition (GAEC)

(d) Minimum level of maintenance

Ensure a minimum level of maintenance and avoid the deterioration of habitats

- (GAEC 7) Minimum livestock stocking rates or/and appropriate regimes
- (GAEC 8) Protection of permanent pasture
- (GAEC 9) Retention of landscape features, including, where appropriate, the prohibition of the grubbing up of olive trees
- (GAEC 10) Avoiding the encroachment of unwanted vegetation on agricultural land
- (GAEC 11) Maintenance of olive groves in good vegetative condition