



PAYING AND INTERVENTION AGENCY FOR AGRICULTURE



FIRST STEP IN UPDATING LPIS

ROMANIAN PAYING AND INTERVENTION
AGENCY FOR AGRICULTURE (PIAA).

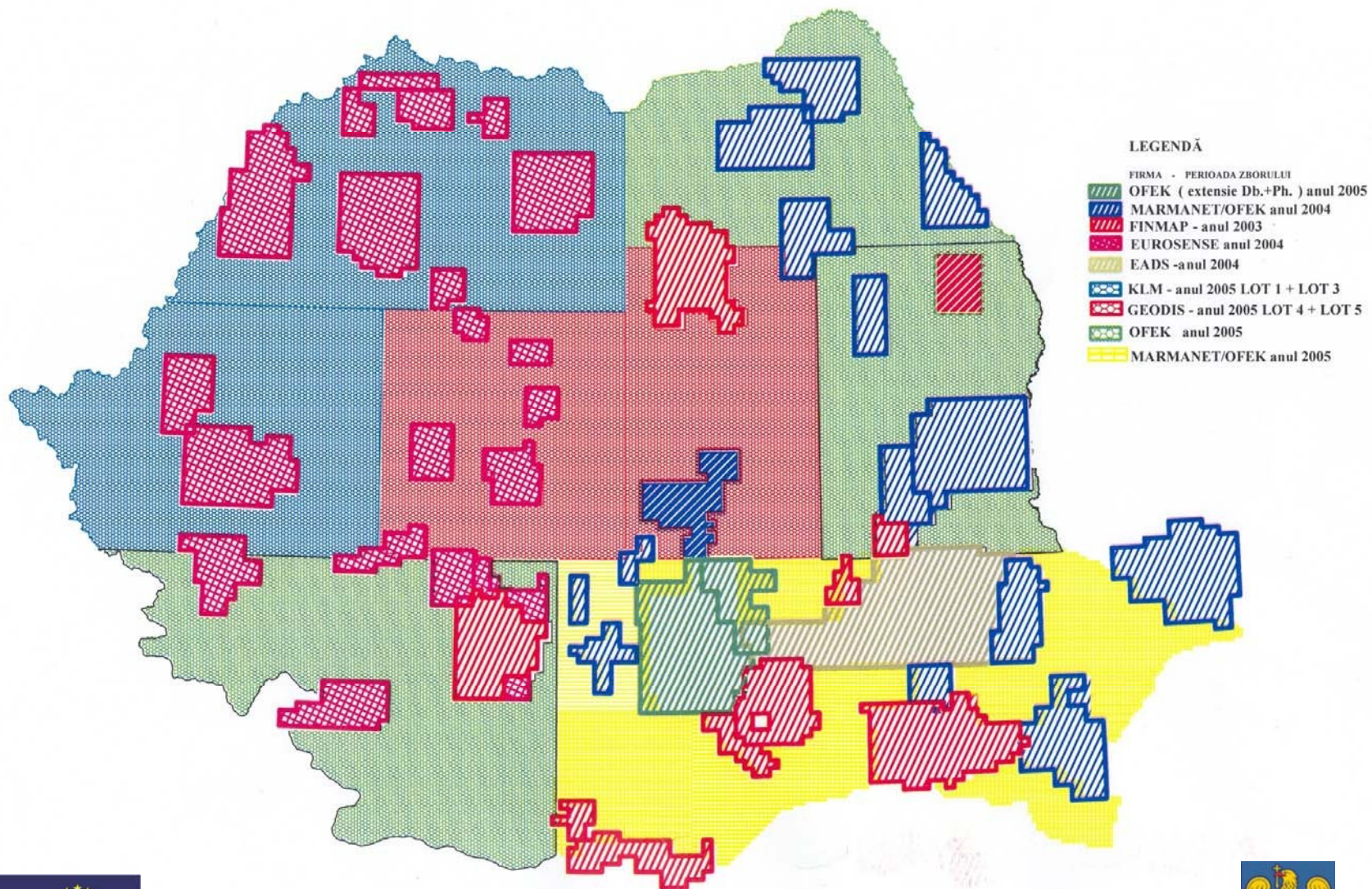
LPIS WORKSHOP

Sofia, 17-18th of September 2008

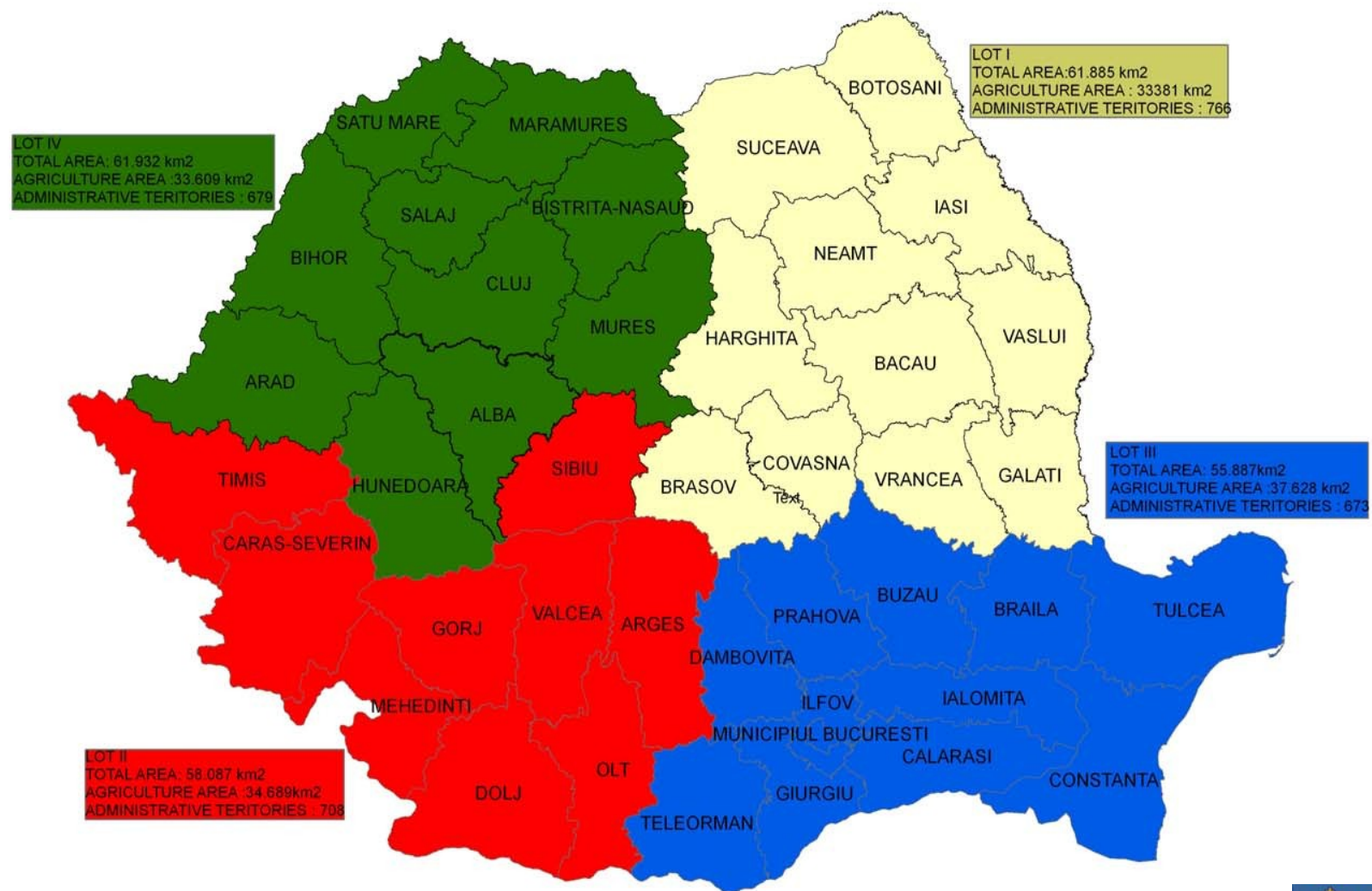
BUILDING LPIS IN ROMANIA

- ④ **Romania adopted the physical block system for building LPIS**
- ④ **LPIS was built based on ortophotos, VHR images and cadastral maps:**
 - ⑨ **Orthophotos (235.694 km²) 99,1%**
 - delivered by Cadastre Agency:**
 - achizition between 2003-2005
 - colored tiles 2,5/2,5km
 - national projection sistem, STEREO 1970
 - scale 1:5000
 - pixel size 0,5m
 - precizion +/- 1m
 - ⑨ **VHR images (20216 km²) 0.82%**
 - ⑨ **CADASTRAL MAPS (269 km²) 0.08%)**
- ④ **Administrative borders used - 2004**

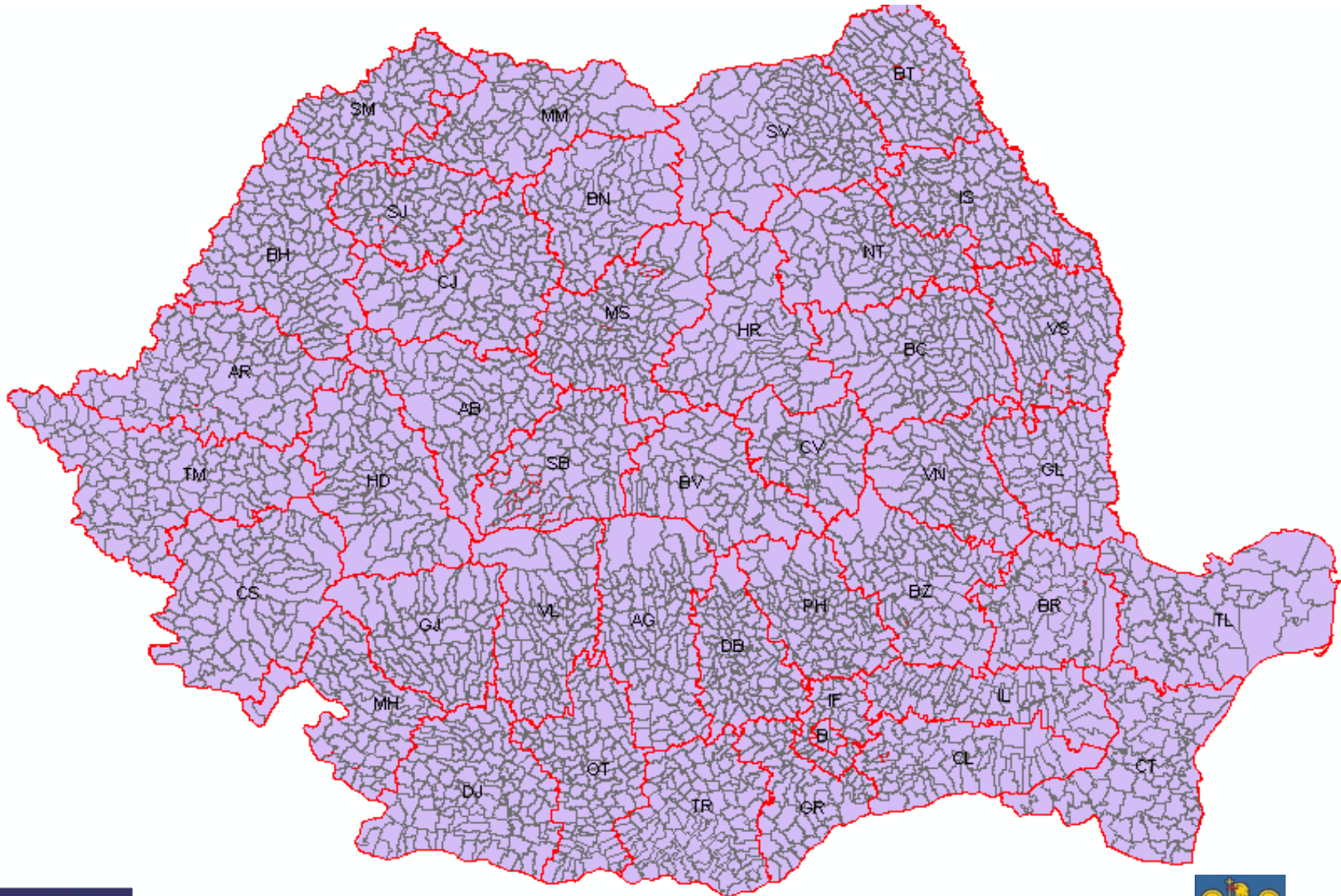
ORTOPHOTO USED



DIVIDING BY LOTS



Romania is divided in 42 counties and 3177 communes



PAYING AND INTERVENTION AGENCY FOR AGRICULTURE



DIGITIYATION OF PHYSICAL BLOCS

- ④ Was done by four contractors
- ④ The results of the digitization are:

	Number of polygons in LPIS database	AREA (HA)	AREA (square km)
BA	1 134 203	13 447 568	134 475
SA	538 967	1 171 711	11 717
NA	1270306	9 220 000	92 200
total	2 943 476	23 839 279	238 392

	Number of polygons in LPIS database with at least one claim of the farmers	AREA (HA)	AREA (square km)
BA	1 125 805	9 766 255	97 662
SA	163 754	516 075	5160
total	1 289 559	10 282 330	102 823

- app. 1 200 000 farmers claims in 2007
- app. 1 130 000 farmers claims in 2008
- more than 7 000 000 agricultural parcels claimed

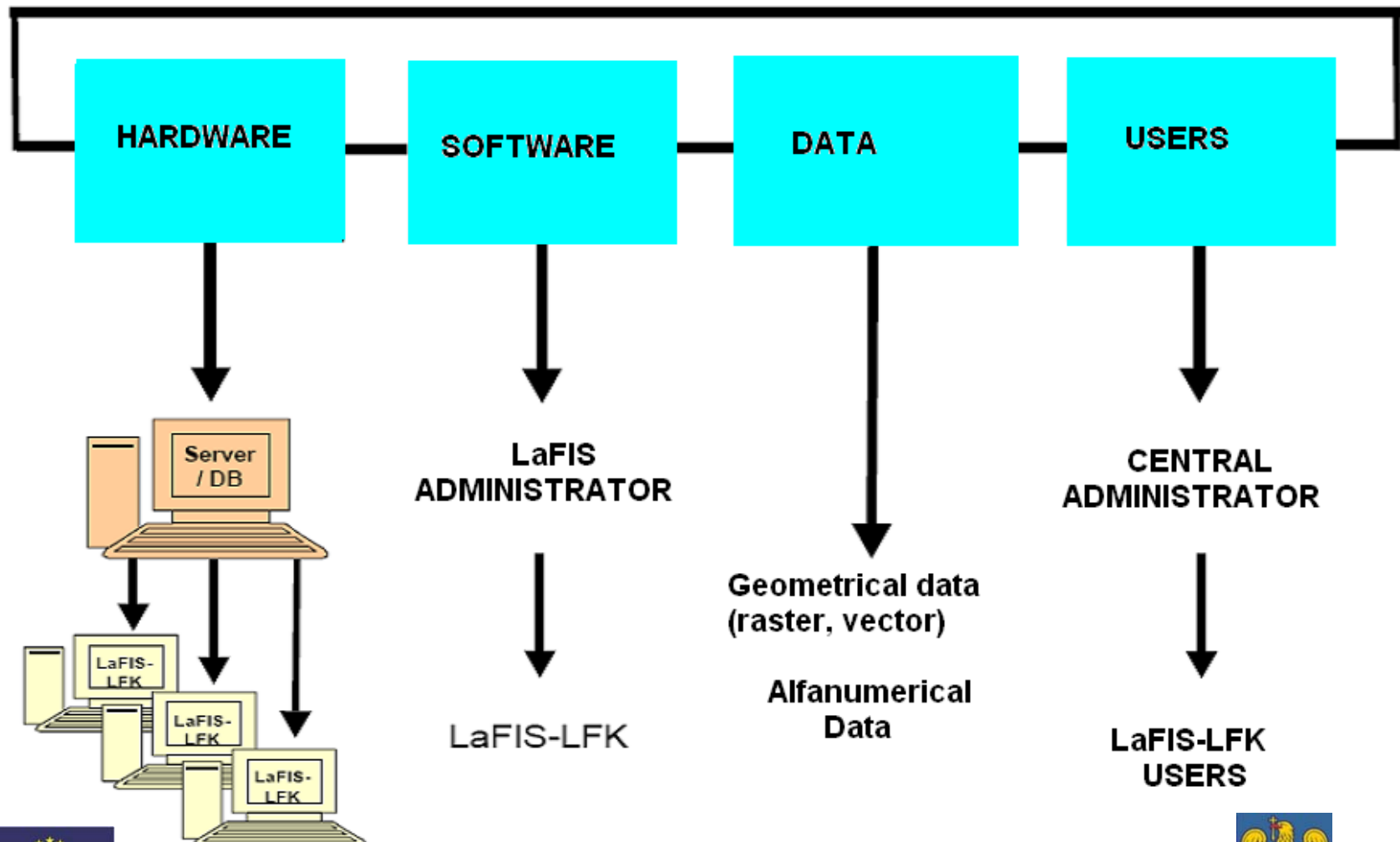


PAYING AND INTERVENTION AGENCY FOR AGRICULTURE



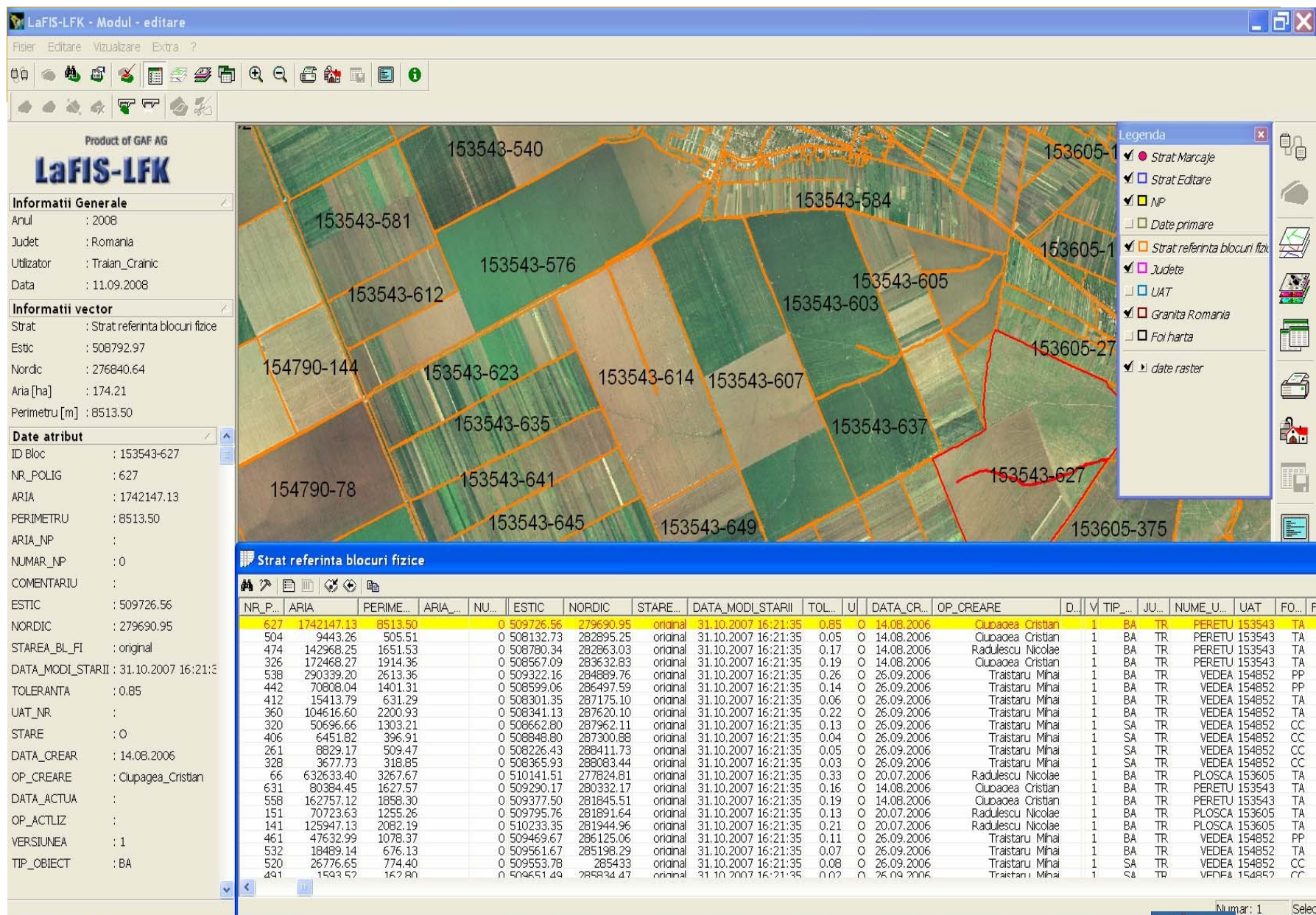
GIS SOLUTION

- ④ GIS solution is based on ORACLE 10g, based on ArcSDE (ESRI)
- ④ Software is built in such a way to have different reference layers for each year



PAYING AND INTERVENTION AGENCY FOR AGRICULTURE





PAYING AND INTERVENTION AGENCY FOR AGRICULTURE



LaFIS-LFK - Modul - editare

Fisier Editare Vizualizare Extra ?

Product of GAF AG
LaFIS-LFK

Informatii Generale
 Anul : 2008
 Judet : Romania
 Utilizator : Traian_Crainic
 Data : 11.09.2008

Informatii vector
 Strat : Strat referinta blocuri fizice
 Estic : 507852.25
 Nordic : 277702.97
 Aria [ha] : 129.12
 Perimetru [m] : 4865.78

Date atribut
 ID Bloc : 153543-661
 NR_POLIG : 661
 ARIA : 1291199.32
 PERIMETRU : 4865.78
 ARIA_NP :
 NUMAR_NP : 0
 COMENTARIU :
 ESTIC : 507532.67
 NORDIC : 278133.09
 STAREA_BL_FI : original
 DATA_MODI_STARII : 31.10.2007 16:21:5
 TOLERANTA : 0.49
 UAT_NR :
 STARE : O
 DATA_CREAR : 14.08.2006
 OP_CREARE : Clupagea_Cristian
 DATA_ACTUA :
 OP_ACTLIZ :
 VERSIUNEA : 1
 TIP_OBIECT : BA

Legenda
☒ Strat Marcaje
☒ Strat Editare
☒ NP
☐ Date primare
☒ Strat referinta blocuri fizice
☒ Judete
☐ UAT

Proprietati bloc fizic (153543-661)

General Informatii solicitare Istoric

ID Fermier	ID parcela	Fol. Tm.	Arie parc...	ID cultura	Cultura	Cod c...	Arie cultur
RO257467436	1	TA	9.15	1a	Grau c...	101	9.1
RO257467436	3	TA	4.85	3a	Grau c...	101	4.8
RO257468895	1	TA	1.12	1a	Grau c...	101	1.1
RO257471960	1	TA	0.5	1a	Porumb	108	0.
RO257474697	1	TA	1	1a	Grau c...	101	1
RO257482071	24	TA	16	24a	Floare...	201	1
RO257484899	87	TA	0.9	87a	Orzoai...	106	0.
RO257484899	86	TA	3.91	86a	Grau c...	101	3.9
RO257484899	84	TA	0.95	84a	Grau c...	101	0.9
RO257484899	83	TA	0.92	83a	Orzoai...	106	0.9
RO257484899	79	TA	13.74	79a	Grau c...	101	13.7
RO257484899	80	TA	0.7	80a	Grau c...	101	0.
RO257484899	88	TA	15.2	88a	Floare...	981	15.
RO257484899	85	TA	2.55	85a	Grau c...	101	2.5
RO257484899	82	TA	2.18	82a	Orzoai...	106	2.1
RO257484899	81	TA	5.32	81a	Orzoai...	106	5.3
RO257491286	1	TA	1.02	1a	Grau c...	101	1.0
RO257495410	4	TA	0.91	4a	Grau c...	101	0.9
RO257509155	1	TA	0.66	1a	Grau c...	101	0.6
RO257512672	2	TA	2.44	2a	Repita	202	2.4
RO257538686	3	TA	0.53	3a	Grau c...	101	0.5
RO257548308	2	TA	0.5	2a	Grau c...	101	0.
RO257553623	5	TA	0.38	5a	Grau c...	101	0.3
RO257567951	4	TA	1	4a	Grau c...	101	1
RO257586700	1	TA	0.51	1a	Grau c...	101	0.5

Aria blocului fizic: 129.12 ha Aria totala declarata: 116.42 ha

Acceptare Revocare Se aplica

central



PAYING AND INTERVENTION AGENCY FOR AGRICULTURE



UPDATING OF LPIS DATABASE

Several methods was used for updating LPIS/GIS:

- *splitting of reference parcel*
- *merging of reference parcel*
- *changing of id. number of reference parcel*
- *changing the physical block in agreement with changing of the administrative units and the allocated code*

UPDATING OF LPIS DATABASE

Updating of LPIS is performed :

1. based on farmers requests for update
2. based on spot controls
3. based on Controls with Remote Sensing
4. based on new orthophoto (will start for 2009 campaign)



PAYING AND INTERVENTION AGENCY FOR AGRICULTURE



UPDATING OF LPIS DATABASE

1. Update of LPIS based on farmers requests for update

- more than 7000 new physical blocks digitized for area digitized initial as possible nonagricultural

initial



Updated based on farmer request
after on the spot check

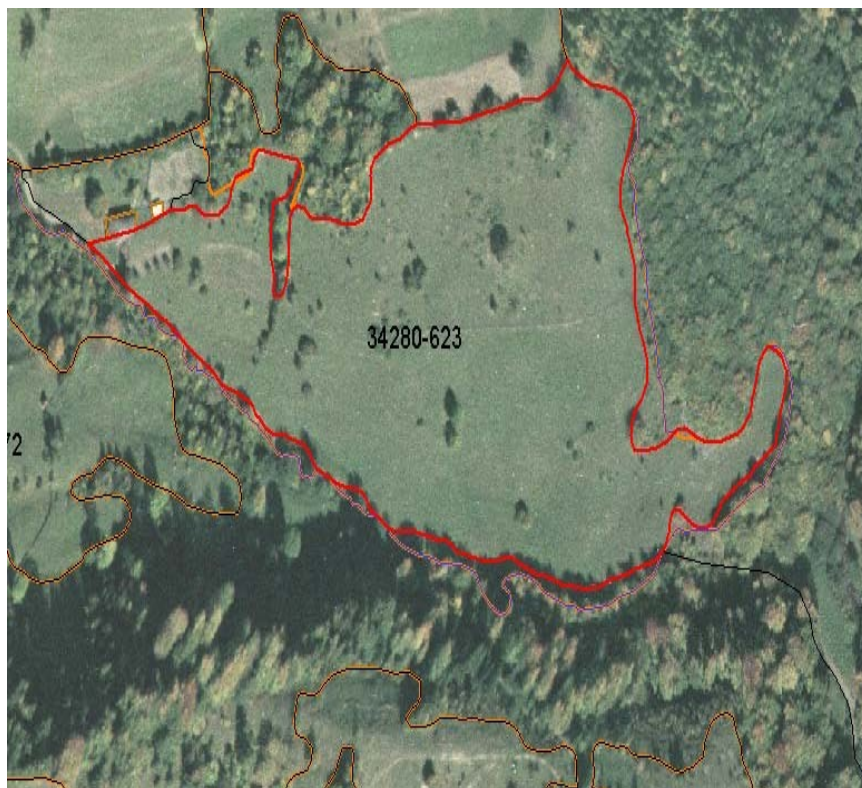


UPDATING OF LPIS DATABASE

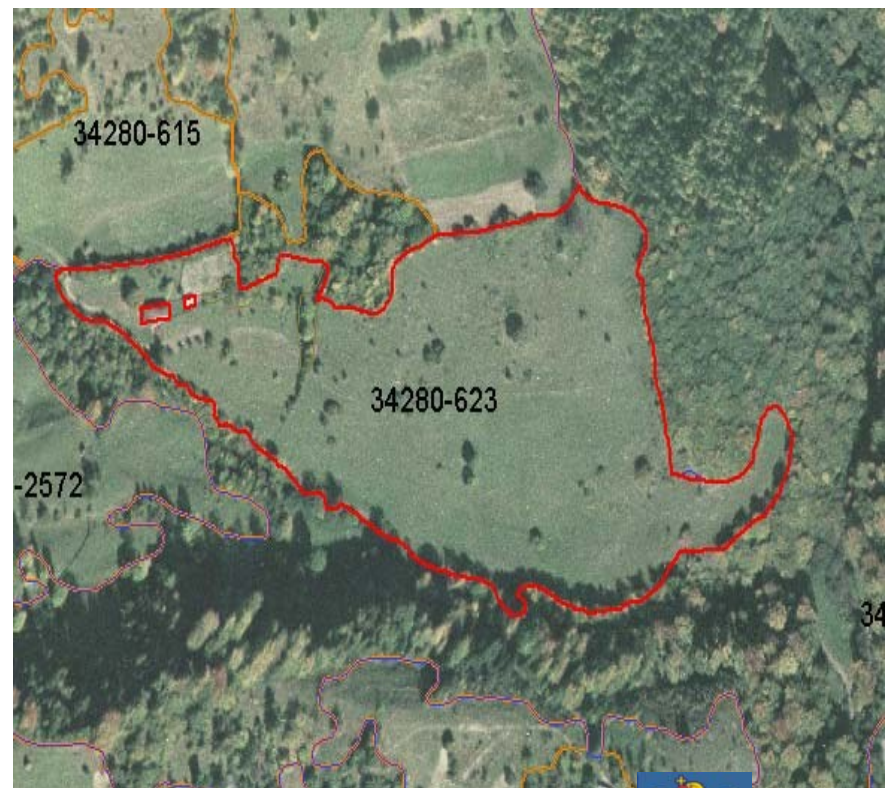
2. Update of LPIS based on spot controls

- More than 500 physical blocks was adjusted based on the results from on the spot check

Initial



Updated based on GPS measurement



UPDATING OF LPIS DATABASE

Initial



Updated based on GPS measurement

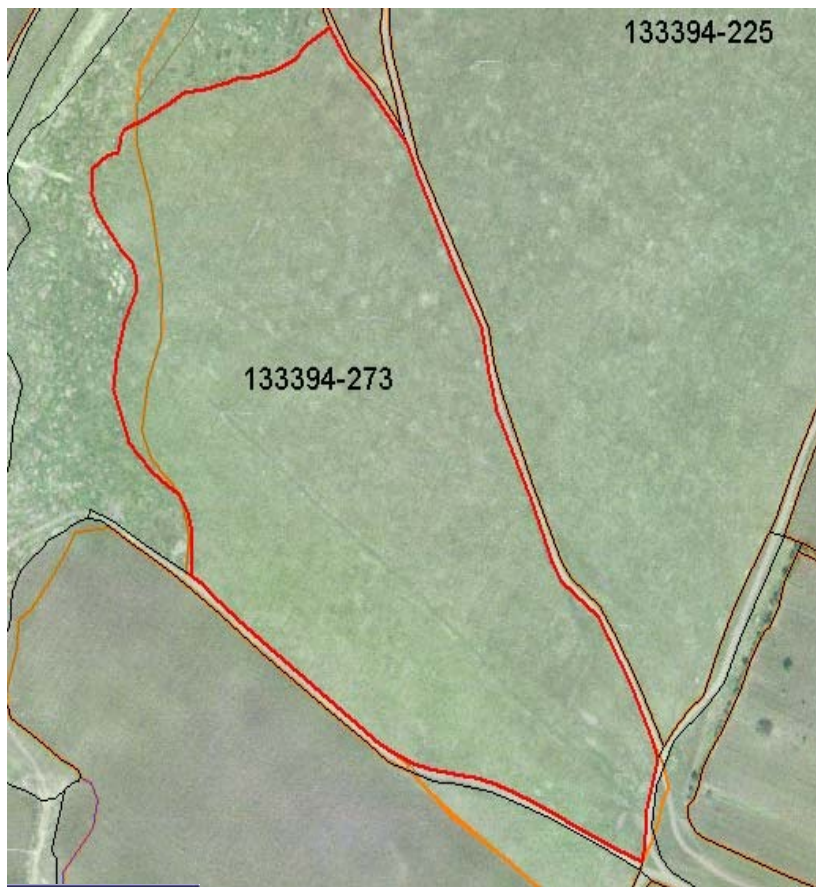


UPDATING OF LPIS DATABASE

3.Update of LPIS based on Controls with Remote Sensing

More than 400 PB was changed based on RS results

Initial



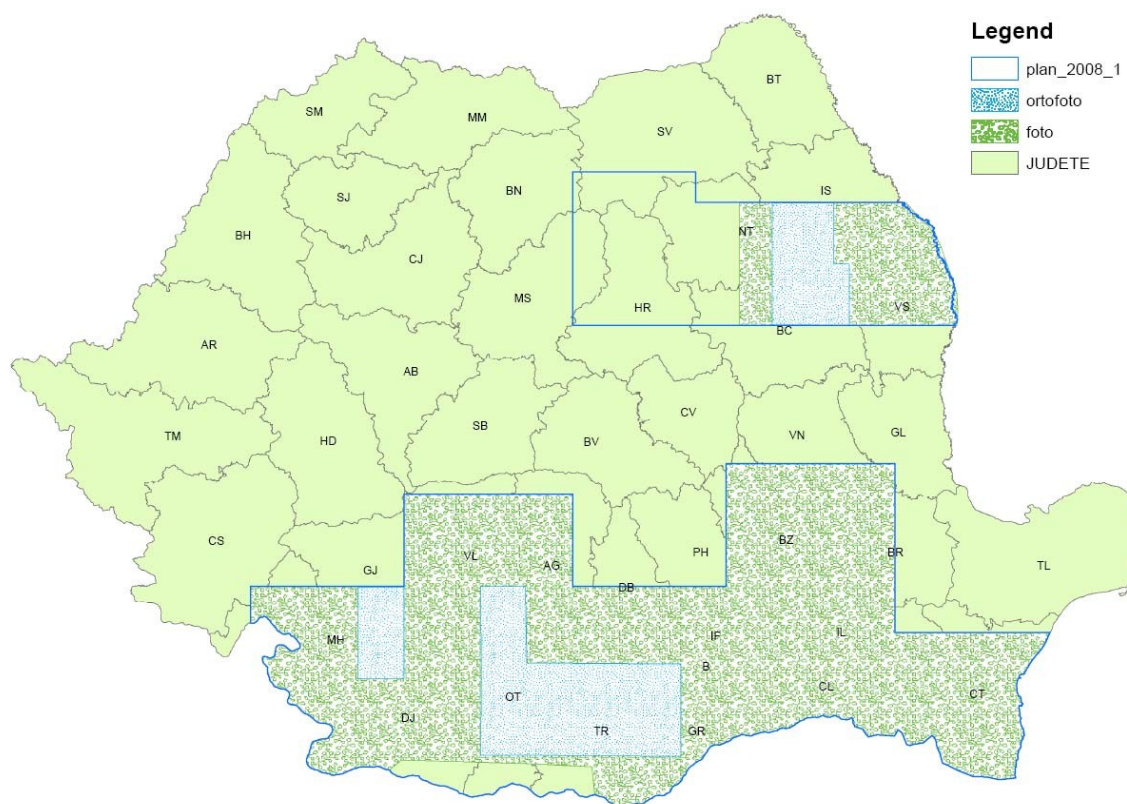
Change based on RS results



UPDATING OF LPIS DATABASE

4. Updating based on the new orthophoto will start for 2009 campaign

There is more than 20 000 square km of orthophoto already acquired and the updating of LPIS based on new orthophoto will start at the end of September 2008



UPDATING OF LPIS DATABASE



UPDATING OF LPIS DATABASE



UPDATING OF LPIS DATABASE



PAYING AND INTERVENTION AGENCY FOR AGRICULTURE



HISTORIZATION OF BLOCK UPDATING

LaFIS-LFK - Modul - editare (Mediu de testare)

Fisier Editare Vizualizare Extra ?

Product of GAF AG

LaFIS-LFK

Informatii Generale

Anul : 2008
Judet : Romania
Utilizator : TraianC
Data : 15.09.2008

Informatii vector

Strat : Strat referinta blocuri fizice
Estic : 607055.08
Nordic : 328222.42
Aria [ha] : 0.68
Perimetru [m] : 443.06

Date atribut

ID Bloc : 101298-514
NR_POLIG : 514
ARIA : 6797.95
PERIMETRU : 443.06
ARIA_NP : 0
NUMAR_NP : 0
COMENTARIU :
ESTIC : 607035.05
NORDIC : 328222.83
STAREA_BL_FI : original
DATA_MODI_STARII : 13.02.2008 21:50:4
TOLERANTA : 0.06
UAT_NR : 101298
STARE : O
DATA_CREAR : 19.07.2006
OP_CREATE : Denisa_Vitaskova
DATA_ACTIA :

Proprietati bloc fizic (101298-514)

General Informatii solicitare Istoric

Vizualizare

☐ Strat referinta blocuri fizice
☒ 2/13/2008 9:50:47 PM

Diagrama blocului fizic precedent..
Bloc fizic precedent

☐ Afisare date sursa

Acceptare Revocare Se aplica

Legenda

- ☐ Blocuri fizice modifica
- ☒ Strat Marcaje
- ☒ Strat Editare
- ☒ NP
- ☐ Date primare
- ☒ Strat referinta blocuri
- ☒ Judete
- ☐ UAT
- ☒ Granita Romania
- ☒ Foi harta
- ☒ 59-34. sid
- ☒ date raster

HISTORIZATION OF BLOCK UPDATING

LaFIS-LFK - Modul - editare (Mediu de testare)

Fisier Editare Vizualizare Extra ?

Product of GAF AG
LaFIS-LFK

Informatii Generale

Anul : 2008
Judet : Romania
Utilizator : TraianC
Data : 15.09.2008

Informatii vector

Strat : Strat referinta blocuri fizice
Estic : 607055.08
Nordic : 328222.42
Aria [ha] : 0.68
Perimetru [m] : 443.06

Date atribut

ID Bloc : 101298-514
NR_POLIG : 514
ARIA : 6797.95
PERIMETRU : 443.06
ARIA_NP : 0
NUMAR_NP : 0
COMENTARIU :
ESTIC : 607035.05
NORDIC : 328222.83
STAREA_BL_FI : original
DATA_MODI_STARII : 13.02.2008 21:50:4
TOLERANTA : 0.06
UAT_NR : 101298
STARE : 0
DATA_CREAR : 19.07.2006
OP_CREARE : Danica Vitackova

Proprietati bloc fizic (101298-514)

General | Informatii solicitare | Istoric

Vizualizare

☒ Strat referinta blocuri fizice
☒ 2/13/2008 9:50:47 PM

Diagrama blocului fizic precedent...

Bloc fizic precedent

Acceptare Revocare Se aplica

Schema

ID : 1707707
ID Bloc : 101298-514
VALABIL DE LA : 2/13/2008 9:50:47 PM
VALABIL LA : 12/31/2100 11:59:59 PM

ID : 1245037
ID Bloc : 101298-514
VALABIL DE LA : 10/31/2007 4:00:46 PM
VALABIL LA : 2/13/2008 9:50:47 PM



PAYING AND INTERVENTION AGENCY FOR AGRICULTURE



LPIS WEB

A tool useful for farmers and also for PIAA clerks

APIA - LPISweb - Version 2.4.4.32 - Microsoft Internet Explorer

File Edit View Favorites Tools Help

Back Search Favorites

Address <http://lpis.apia.org.ro/>

Agencia de Plăți și Intervenție pentru Agricultură - LPISweb

1 : 8420

harti

- ☒ harta de ansamblu
- ☒ ortho foto plan
- ☐ lfa-hny-iba
- ☒ bloc fizic
- ☒ limita

legenda

imprima

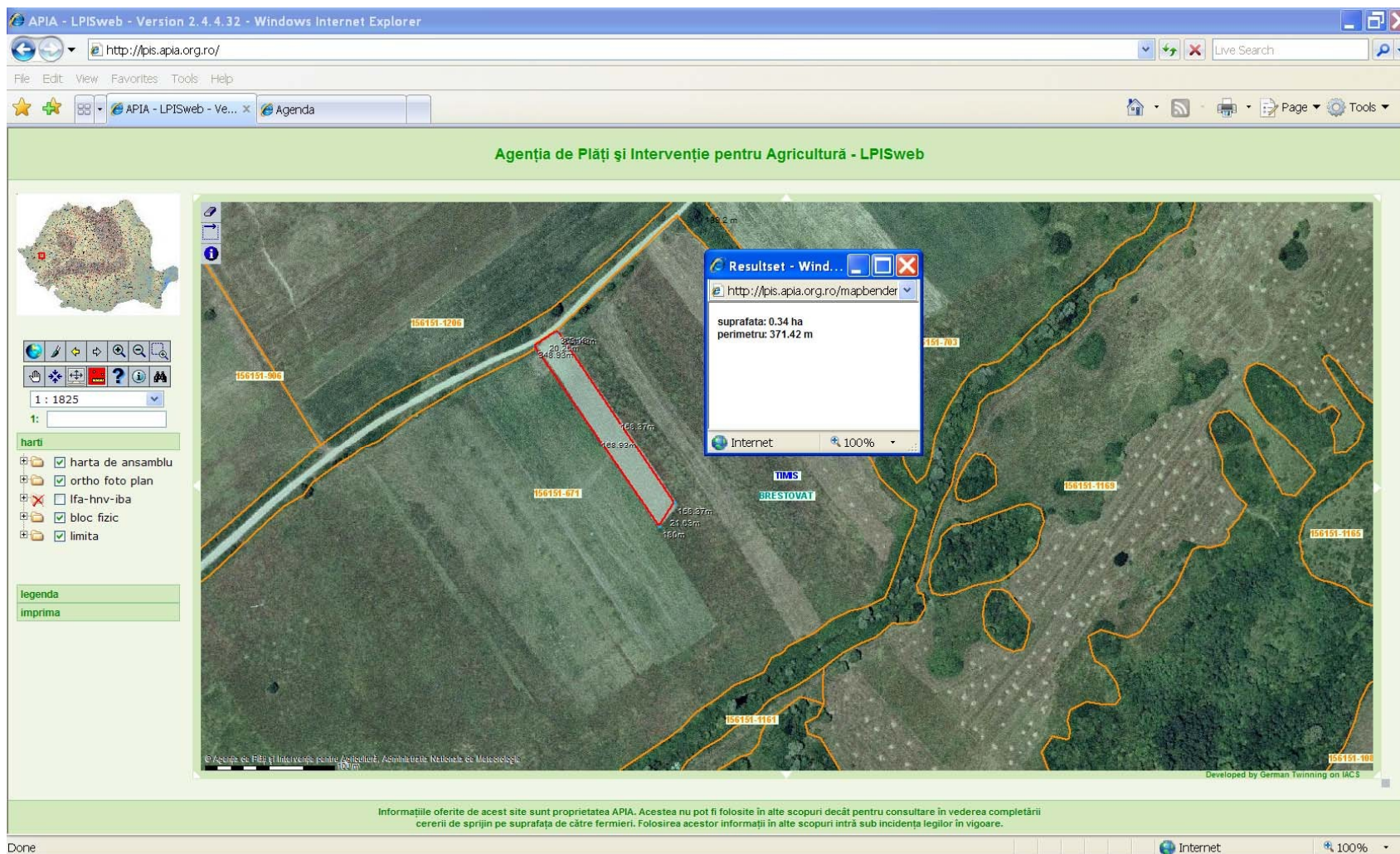
Informațiile oferite de acest site sunt proprietatea APIA. Acestea nu pot fi folosite în alte scopuri decât pentru consultare în vederea completării cererii de sprijin pe suprafața de către fermieri. Folosirea acestor informații în alte scopuri intră sub incidența legilor în vigoare.



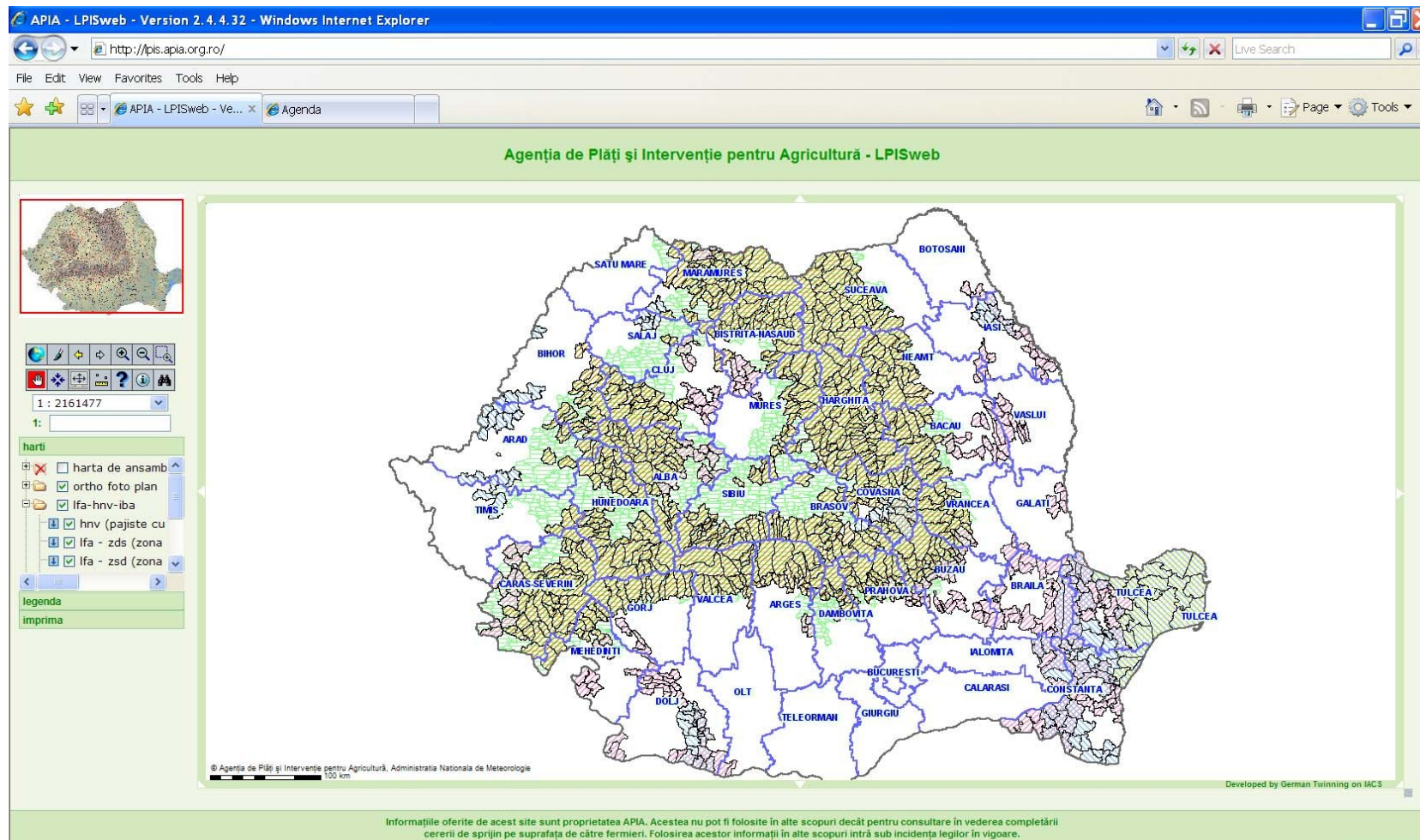
PAYING AND INTERVENTION AGENCY FOR AGRICULTURE



Tools for measuring agricultural parcel area



Layers with LFA and Enviromental area



Thank you for your attention



PAYING AND INTERVENTION AGENCY FOR AGRICULTURE

