

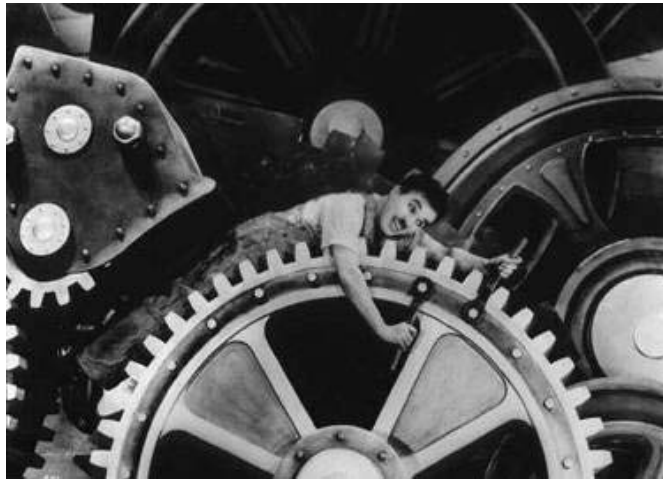
on Cross Compliance

Technical support to DG AGRI and Member States Sound implementation of Cross Compliance

Audit → Identify the few weak points



JRC → Support to be 100% robust



Exchange of information with Member States

- Workshops, conference
FAS-GAEC, MARS-PAC (Ljubljana)
- Experts group meeting
March (WebDB), June (1st & 2nd Pillar), November (risk analysis)
- Technical visits (Administration, farmer, controller, field visit ...)
PL, HU, SE, DK, LV, EE
- Bilateral discussion
- Website
WikiCAP, GAEC WebDB, MARS Website (<http://mars.jrc.ec.europa.eu/>)



- Annex IV implementation

All issues and standards to be implemented

From 3 to 11 standards implemented

EU level playing field



- FAS implementation

Risk analysis (RA)

Too many risk criteria → Equivalent to random



Need of guidelines to chose RA criteria

Difficulty to assess RA pertinence
Small number of infringements



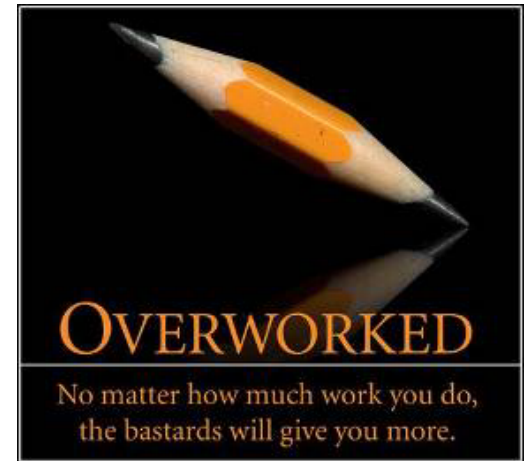
Sample within Eligibility sample
95% of farmers excluded

Not enough use of GIS (LPIS, vulnerable zones, ...)

Minimum control rate

Control rate in SPS MS slightly $> 1\%$

Difficulty to ensure all controls



Introduction of SMR for SAPS in 2009

Decrease of control rate

1% first pillar AND 1% second pillar

Not always reached

GAEC definition

Missing standards of 'Annex IV'

Already in national law or in SMR

→ EU subsidies = EU legislation to be implemented (allow sanction)

Need of justification, explanation for some requirements

12% slope, remove cut grass from pasture

Difficulty to define control criteria

Machinery use (depth of gullies)



NB: difficulty to ensure baseline → need of AEM

Not enough animal to maintain pasture

Sanction table

Extent, permanence, severity not always defined

Intentional not defined or rarely used

‘soft’, lenient sanction level



GAEC control

Bad eligibility assessment or definition

Create confusion on GAEC management

Wet zones, bushy zones

Clear definition of control points

Subjectivity of controllers



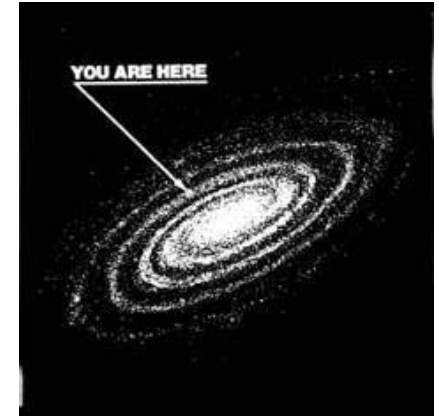
Difficulty to practically assess control point defined

2 years old trees



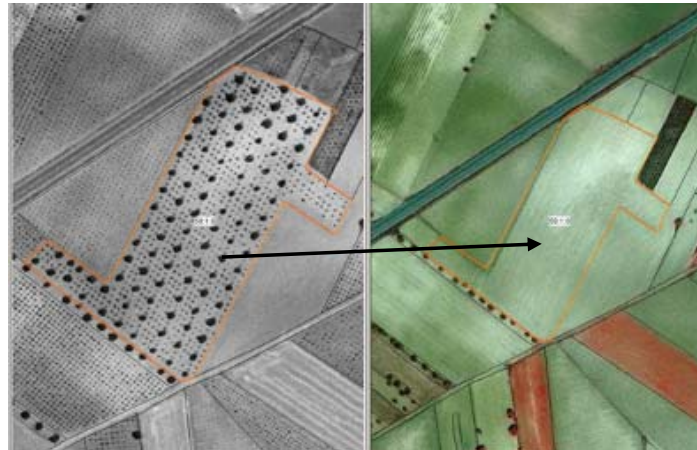
GAEC control

Need to register parcel history
crop rotation or new permanent pasture



Need of reference

Identify and locate landscape features removal



Control report

Need of check list



Cross check of different control reports
'All for one, one for all'



'Intentional' rarely used

How to evidence the 'check of non mandatory check'?

Permanent Pastures

Locate and follow new created
Permanent Pasture

5 years follow-up

Not a priority

Ratio not at Risk at national level

NB: Presentation from Vincenzo



Farm Advisory System

Better target farmers who need FAS

Small farms, Farmers closed to retirement ...



Not a priority

No financial sanction

Part time farmers do not care about Farm activity



Lack of feedback data

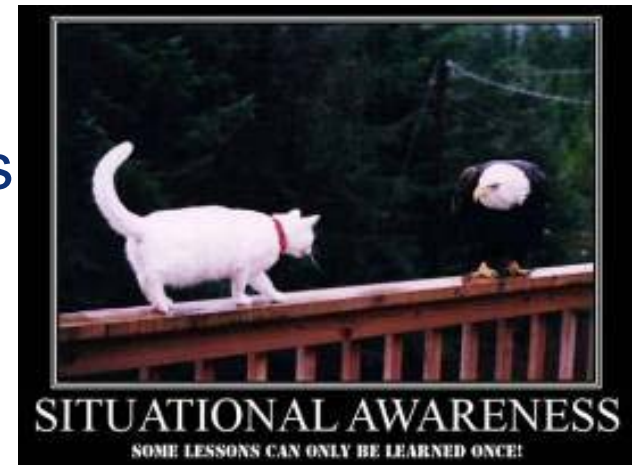
No financial support

Farm Advisory System

Small adjustment replaced by a FAS

FAS really improve CC awareness

However, need of farmers survey



Should provide remediation solutions

NB: Presentation of Vincenzo and Inge



Farmers' comments

Farmers are not treated equally across MS

Subsidies needful (more equity between MS)

Huge paper workload



SPS simplification 'killed' by cross compliance



Farmers' comments

Side-effects

Increase area to spread manure → increase of price

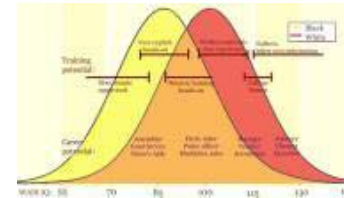
Increase width of buffer strip → not enough surface to spread manure

Financial PP or AEM support < SPS support



Tune GAEC requirements

Deadlines depending on latitude



Differences between 1st and 2nd pillar

Cross Compliance and sanction tables

Transpose national law into EU law

Must exist for few fraudulent or 'non conscientious' farmers



Whole list of requirements must be yearly issued

New farmers must be aware

TYPES DE MESURES, POINTS DE CONTRÔLE ET CONSTATS		Oui	Non	Anomalies descriptives et/ou réglementaires		
				Bold	ONC	OWAF
I. Mise en place d'une surface minimale en couvert environnemental						
Contrôlé : oui <input type="checkbox"/> sans objet <input type="checkbox"/> non <input type="checkbox"/> (période de contrôle non adaptée)						
A. Réalisation de la surface en couvert environnemental et localisation prioritaire le long des cours d'eau sous forme de bande						
(4AA01) Absence de surface en couvert environnemental				50		
(4AA02) Localisation prioritaire le long des cours d'eau non respectée				50		
(4AA03) Localisation prioritaire le long des cours d'eau respectée mais surface en CE inférieure à la surface à réaliser						
B. Présence du couvert environnemental du 1er mai au 31 août						
(4AA04) Implantation non effectuée après la date limite d'implantation ou, en cas de rotation, retournement avant le 31 août				10		
(4AA05) Couvert non autorisé						
C. Entretien des couverts environnementaux						
(4AA06) Pratiques interdites constatées le long des cours d'eau				50		
(4AA07) Pratiques interdites constatées en dehors des bordures de cours d'eau						
Détail du constat :						
Description of anomaly						

Use of GAEC WebDB

Overview of all MS

Requirements

Control points

Specific definitions (water network, buffer limit...)



The screenshot shows a web browser window with the URL <https://www.ec.europa.eu/jrc/gaec/gaecdb.php>. The page title is "CURRENT GAEC DOCUMENT". It displays a table of GAEC documents for various countries across different campaign years. The table is organized into three main sections: "Campaign year 2009", "Campaign year 2008", and "Campaign year 2007". Each section lists countries and provides links to HTML and PDF versions of the documents. The "Campaign year 2009" section shows "DemoMS" with links to HTML and PDF versions. The "Campaign year 2008" section shows "Hungary" and "Romania" with links to HTML and PDF versions. The "Campaign year 2007" section shows a list of countries including Austria, Belgium Flanders, Belgium Walloon, Bulgaria, Cyprus, Czech Republic, DemoMS, and Denmark, each with links to HTML and PDF versions.

Campaign year	Countries	HTML version	PDF version
Campaign year 2009	DemoMS	HTML version	PDF version
Campaign year 2008	Hungary	HTML version	PDF version
	Romania	HTML version	PDF version
Campaign year 2007	Austria	HTML version	PDF version
	Belgium Flanders	HTML version	PDF version
	Belgium Walloon	HTML version	PDF version
	Bulgaria	HTML version	PDF version
	Cyprus	HTML version	PDF version
	Czech Republic	HTML version	PDF version
	DemoMS	HTML version	PDF version
	Denmark	HTML version	PDF version



Share other information

WebDB for SMR, FAS

WikiCAP (legislation, technical information)

Use of FAS

Increase communication to farmer

Explanation of background,
basis of cross compliance

Information on other MS

Remediation solutions examples

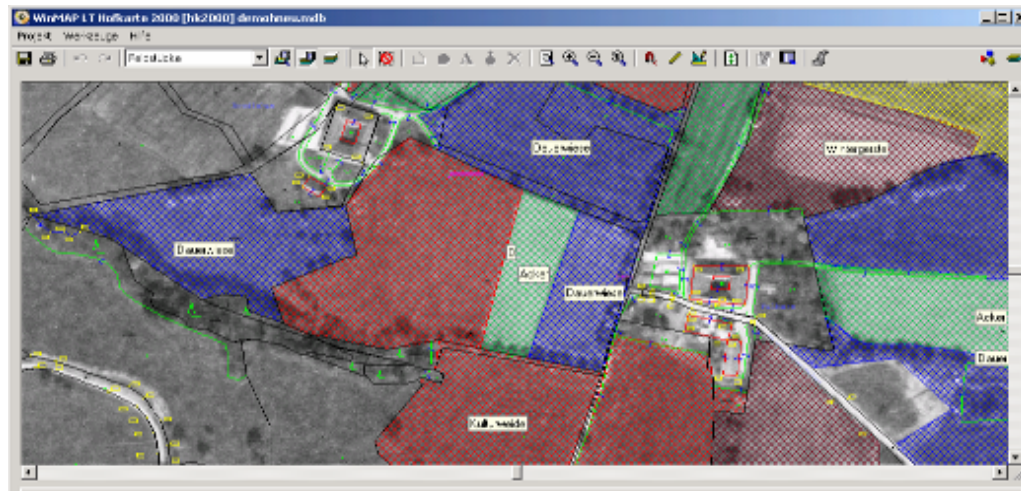


Use of GIS – Remote sensing imagery

Characterise holding location, structure (vulnerable zone, DEM, water network)

Risk analysis

Control campaign efficiency



Use of GIS – Remote sensing imagery

Provide information on:

land use, land cover, infringements

Risk analysis

Improve field visit efficiency



Use of GIS – Remote sensing imagery

Support to create reference layers

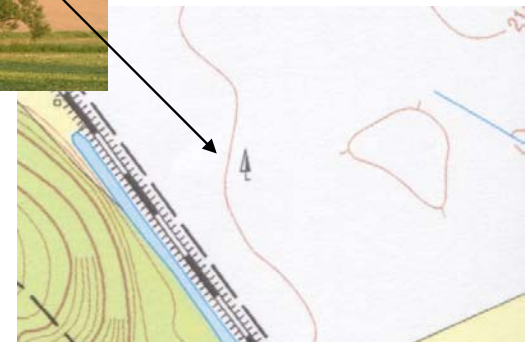
Landscape features



© UK
Perspectives



© Space Imaging,
Ikonos 2005

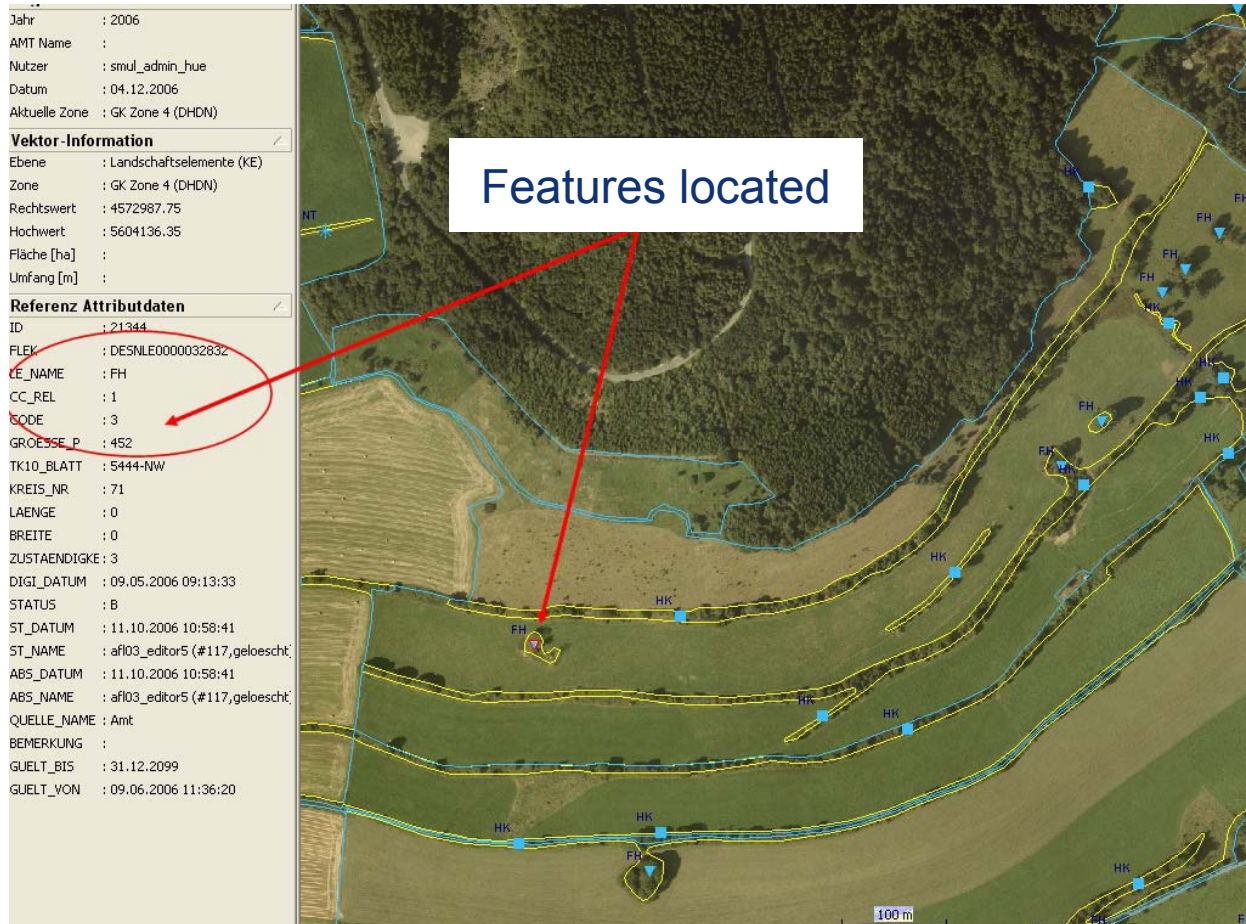


Support to create reference layers



Features digitised

Support to create reference layers



Farmers' declaration
Administration agreement
Features located
Attribute table

Standards	A T	B E	B G	C Y	C Z	D E	D K	E E	E S	F I	F R	G R	H U	I E	I T	L T	L U	L V	M T	N L	P L	P T	R O	S E	S I	S K	U K
– Minimum soil cover	✓	✓	✓	✓		✓	✓		✓	✓	✓	✓				✓				✓		✓	✓	✓	✓		✓
– Minimum land management reflecting site-specific conditions		✓	✓	✓	✓				✓	✓	✓	✓	✓		✓		✓	✓	✓	✓	✓	✓	✓		✓	✓	✓
– Retain terraces	✓		✓	✓	✓	✓			✓			✓			✓		✓		✓				✓		✓		
– Standards for crop rotations where applicable	✓		✓			✓				✓	✓				✓	✓	✓		✓	✓	✓	✓	✓		✓		✓
– Arable stubble management	✓	✓	✓	✓	✓	✓		✓	✓	✓	✓	✓	✓		✓	✓	✓		✓	✓	✓	✓	✓		✓	✓	✓
– Appropriate machinery use	✓		✓	✓				✓	✓	✓		✓		✓	✓			✓	✓		✓				✓	✓	✓
– Minimum livestock stocking rates or/and appropriate regimes				✓										✓									✓	✓			✓
– Protection of permanent pasture	✓	✓	✓		✓	✓		✓	✓	✓		✓			✓	✓	✓	✓			✓	✓	✓			✓	✓
– Retention of landscape features, including, where appropriate, hedges, ponds, ditches trees in line, in group or isolated and field margins,	✓	✓	✓	✓	✓	✓			✓	✓	✓	✓		✓	✓	✓	✓		✓	✓			✓	✓	✓		✓
– where appropriate, prohibition of the grubbing up of olive trees									✓		✓				✓							✓			✓		
– Avoiding the encroachment of unwanted vegetation on agricultural land	✓	✓	✓	✓		✓	✓	✓	✓	✓	✓	✓	✓	✓	✓	✓	✓	✓	✓		✓	✓	✓	✓	✓	✓	✓
– Maintenance of olive groves and vines in good vegetative condition											✓	✓			✓				✓			✓			✓		
– Establishment of buffer strips along water courses,			✓							✓	✓																
– respect of authorisation procedures for using water for irrigation.																											

According to GAEC web database (GAEC defined by MS in 2007)

Now you have the floor

Questions ?

Remarks?

Missing issues?

Expectations?

Doubts? (crop price fluctuation, animals for field works...)

...