




PAYING AGENCY FOR AGRICULTURE, FISHERIES AND RURAL DEVELOPMENT

THE NEW CAP REFORM AND CROATIAN LPIS

Challenge and solutions

LPIS Department - Croatian paying agency

1



PAYING AGENCY FOR AGRICULTURE, FISHERIES AND RURAL DEVELOPMENT

LPIS Workshop Brussels 24-26 Sep 2014

OVERVIEW

- Croatia and LPIS general
- New CAP and LPIS requirements
- Croatia – current state and examples
 - Water protection
 - Grassland protection
 - EFA implementation
- Conclusion


2

PAYING AGENCY FOR AGRICULTURE, FISHERIES AND RURAL DEVELOPMENT

LPIS Workshop Brussels 24-26 Sep 2014

ABOUT CROATIA

- ❑ Croatia joined EU on 01 July 2013
- ❑ Area – 56.000km²
- ❑ Residents – 4.000.000
- ❑ Counties – 21
- ❑ Forests – 47% of territory



3


PAYING AGENCY FOR AGRICULTURE, FISHERIES AND RURAL DEVELOPMENT

LPIS Workshop Brussels 24-26 Sep 2014


CROATIAN LPIS GENERAL

- ❑ Start the establishment of LPIS since 2007
- ❑ Full Application for payment of 2011
- ❑ Farmer block system
- ❑ The LPIS current data
 - ❑ Area – 1.025.000 ha
 - ❑ Number of RP – 1.318.800
 - ❑ Number of farms – 150.643

Distribution of DOF by the years of image acquisition



4




PAYING AGENCY FOR AGRICULTURE, FISHERIES AND RURAL DEVELOPMENT

LPIS Workshop Brussels 24-26 Sep 2014

CAP REFORM - LPIS UPGRADES

No	Legal basis	LPIS requirements	
1	1305/13, art 28-34	<ul style="list-style-type: none"> ➤ NATURA 2000 ➤ Nitrate Vulnerable zones ➤ Sanitary protection zones (The Water Protection) ➤ RD measures ➤ ANC areas 	
2	1306/13, art 67 par 4(b)		
3	640/14, art 5 par (2d)		
4	640/14, art 10 639/14, art 10	Permanent grassland and reduction coefficient	
5	1307/13, art 43-47	Greening	EFA Crop diversification Permanent grassland maintaining

 PAYING AGENCY FOR AGRICULTURE, FISHERIES AND RURAL DEVELOPMENT		LPIS Workshop Brussels 24-26 Sep 2014	
No	LPIS upgrade	Current implementation status	
1	Water protection	IMPLEMENTED	
2	Protection of permanent grassland and NATURA 2000		
3	Landscape features		
4	De-mining reserve		
5	RD / ANC area		
6	EFA	IMPLEMENTATION IN PROGRESS	
7	RD / AEC		
8	Crop diversification	PLANNED	
5	INSPIRE adaptation		


 PAYING AGENCY FOR AGRICULTURE, FISHERIES AND RURAL DEVELOPMENT
 LPIS Workshop Brussels 24-26 Sep 2014


THE WATER PROTECTION FEATURES

SW upgrade implemented


- 1) Buffer strips (SMR 1/GAEC 1)
- 2) Nitrate Vulnerable zones (SMR 1 /GAEC 3)
- 3) Sanitary protection zones (SMR 1/GAEC 3)



7

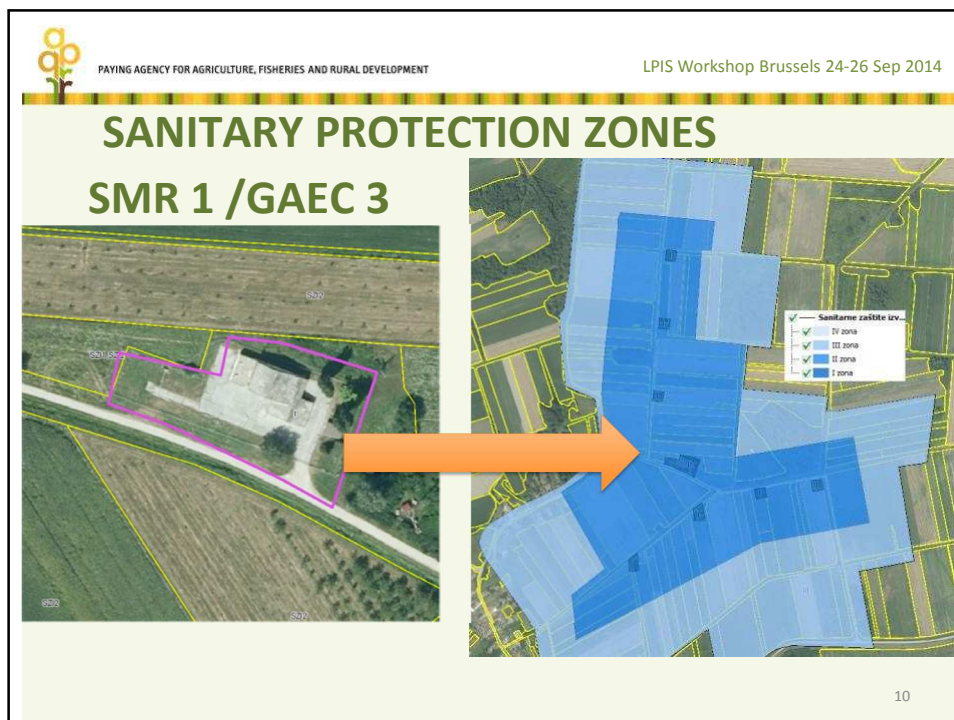
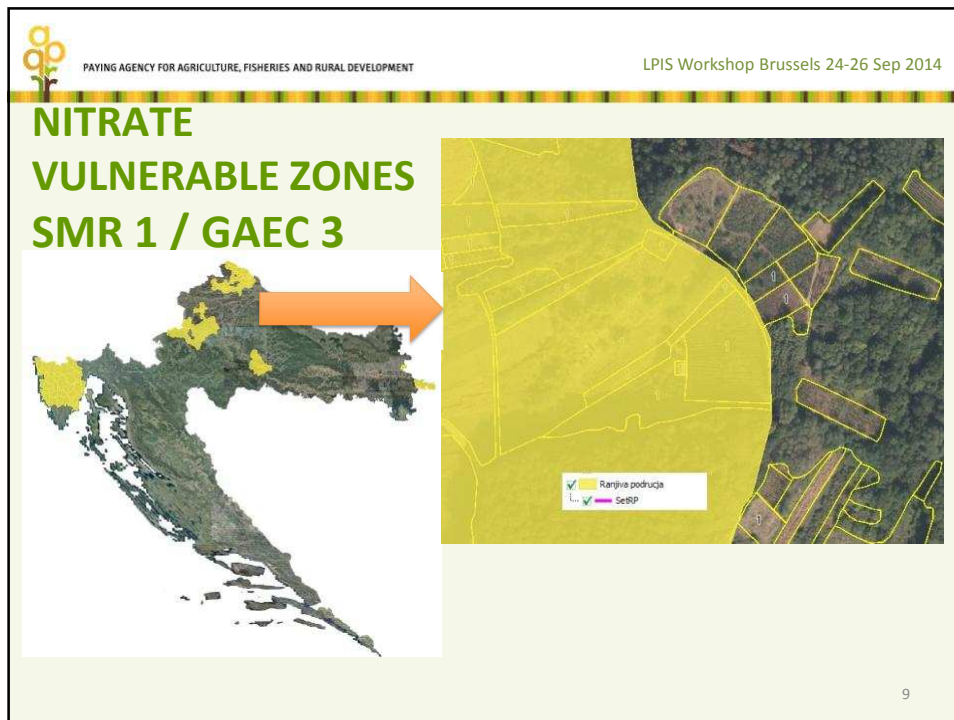

 PAYING AGENCY FOR AGRICULTURE, FISHERIES AND RURAL DEVELOPMENT
 LPIS Workshop Brussels 24-26 Sep 2014

BUFFER STRIPS – SMR 1/GAEC 1



2012

8



PAYING AGENCY FOR AGRICULTURE, FISHERIES AND RURAL DEVELOPMENT

LPIS Workshop Brussels 24-26 Sep 2014

PROTECTION OF PERMANENT GRASSLAND

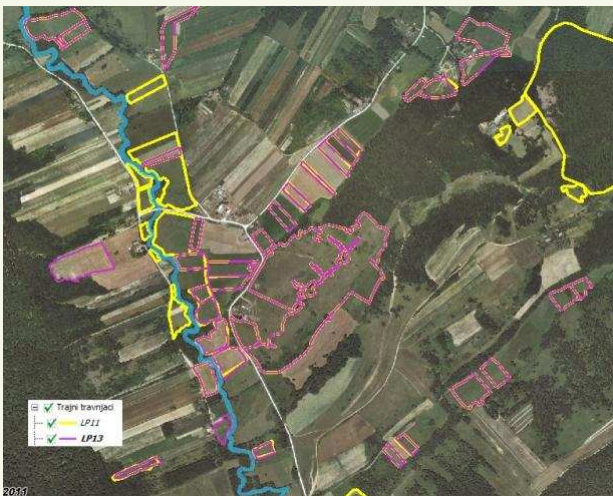
- ❑ LPIS Implemented SW upgrade
 - 1) Application of the reference date for protection and preservation of conversion (LP11 / LP13 layers)
 - 2) Pasture Coefficients
 - Karst pastures – since 2012
 - All other pastures - since 2014
 - 3) NATURA 2000 postponement of mowing – protection habitats of birds and butterflies
- ❑ Implementation in progress (2015)
 - 1) High nature value grassland

11

PAYING AGENCY FOR AGRICULTURE, FISHERIES AND RURAL DEVELOPMENT

LPIS Workshop Brussels 24-26 Sep 2014

PERMANENT GRASSLAND LAYERS FOR LAND USE CONVERSION PROTECTION



Reference dates for Croatia:

LP11 – 30.06.2011

LP13 – 01.07.2013

12

PAYING AGENCY FOR AGRICULTURE, FISHERIES AND RURAL DEVELOPMENT

LPIS Workshop Brussels 24-26 Sep 2014

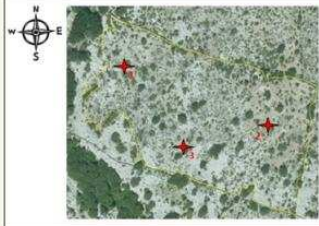
PRO-RATA SYSTEM FOR PASTURES

Example for the photointerpretation key


Ord. Num.	Percentage of eligibility pastures containing landscape features and trees	Eligibility coefficient
1.	> 80 %	1
2.	60 – 80 %	0,8
3.	40 – 60 %	0,6
4.	20 – 40 %	0,4
5.	< 20%	0,2

The eligibility coefficients and range will be harmonized according to the 639\14 art 10, par 1 and 2 (50% and 10% rule)

Koeficient	ARKOD ID	Mjerilo	Površina (ha)	Koordinate centroida
0,2	2638448	1:1090	1,65	335104522 497349653





Pozicija 1




PAYING AGENCY FOR AGRICULTURE, FISHERIES AND RURAL DEVELOPMENT

LPIS Workshop Brussels 24-26 Sep 2014

NATURA 2000 - PROTECTION HABITATS OF BIRDS AND BUTTERFLIES (SMR 2 / SMR3)

14


 PAYING AGENCY FOR AGRICULTURE, FISHERIES AND RURAL DEVELOPMENT

LPIS Workshop Brussels 24-26 Sep 2014

LANDSCAPE FEATURES - GAEC 7

- ☐ Implementation period - 2013 and 2014
- ☐ External contractor – initial vectorization
- ☐ PAAFRD – verification and activation
- ☐ 7 types of features
 - 1) field woods
 - 2) solitary trees
 - 3) trees in line
 - 4) ponds
 - 5) hedges
 - 6) ditches
 - 7) stonewalls

15

 PAYING AGENCY FOR AGRICULTURE, FISHERIES AND RURAL DEVELOPMENT


LPIS Workshop Brussels 24-26 Sep 2014

INTERNAL STONEWALLS EXAMPLE

- ☐ Typical for some parts in Dalmatia
- ☐ Practically impossible for vectorization

Solution applied:

- ☐ Only external borders will be vectorized
- ☐ In the attribute "Estimated_stonewall_lenght" estimated value (in meters) will be added



16

PAYING AGENCY FOR AGRICULTURE, FISHERIES AND RURAL DEVELOPMENT

LPIS Workshop Brussels 24-26 Sep 2014

LANDSCAPE FEATURES - EXAMPLE

DECLARED LF GROUP OF TREES

DECLARED LF TREES IN LINE

NON DECLARED LF TREES IN LINE

DECLARED LF SOLITAR TREES

Legend: Obilježje terasporaza, Točke, Linije, Poljopriv.

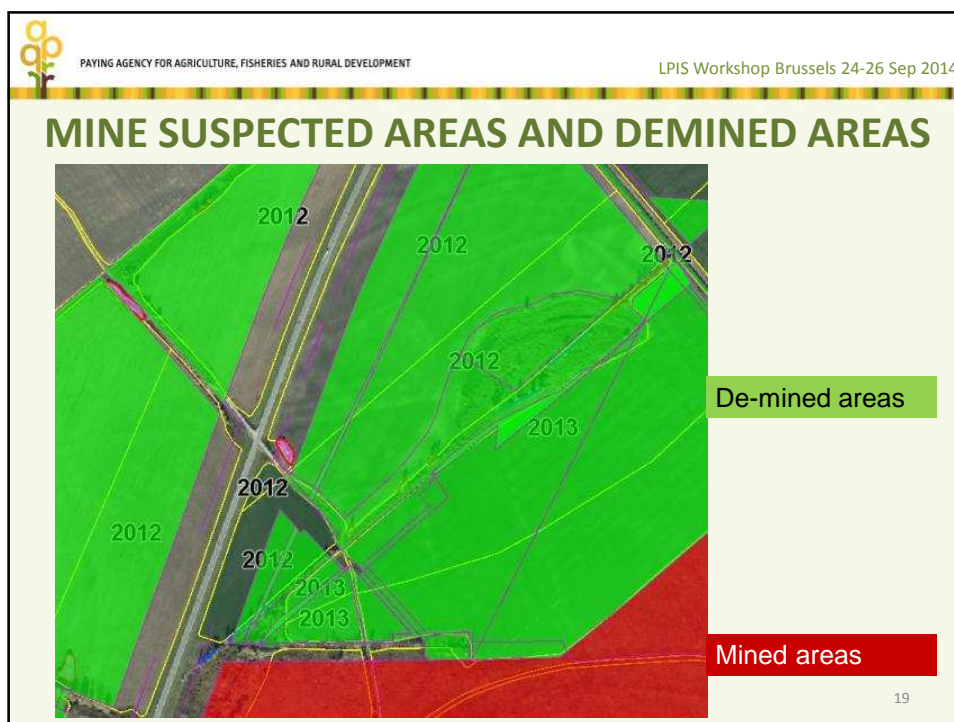
17

PAYING AGENCY FOR AGRICULTURE, FISHERIES AND RURAL DEVELOPMENT

LPIS Workshop Brussels 24-26 Sep 2014

SPECIAL NATIONAL DE-MINING RESERVE FOR CROATIA

- ❑ Mine suspected area - 12.350 ha (2014)
- ❑ Reg. 73/2009, Art.57.a, Reg. 1307/13, Art. 20
- ❑ Reference date 01.01.2005
- ❑ Implemented during 2013



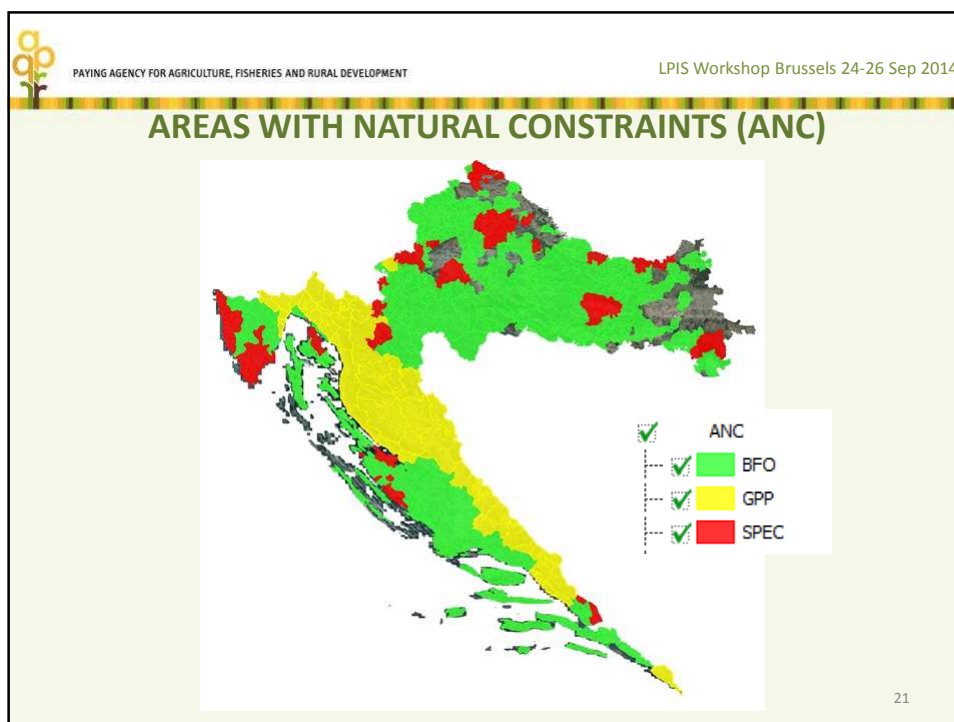
PAYING AGENCY FOR AGRICULTURE, FISHERIES AND RURAL DEVELOPMENT

LPIS Workshop Brussels 24-26 Sep 2014

AREAS WITH NATURAL CONSTRAINTS (ANC)

- ❑ Part of the Rural Development Plan
- ❑ Still waiting for approval from EC
- ❑ Area in accordance with administrative boundaries of municipalities
- ❑ Labeling attributes to the spatial determination by each of categories
- ❑ Classification:
 - ❑ Mountain areas - GPP
 - ❑ Areas facing significant natural constrains- BFO
 - ❑ Areas affected by specific constrains - SPEC
- ❑ The rule for spatial overlap with ANC layer - min 50% of RP in ANC areas

20




PAYING AGENCY FOR AGRICULTURE, FISHERIES AND RURAL DEVELOPMENT

LPIS Workshop Brussels 24-26 Sep 2014

EFA ELEMENTS APPLICABLE FOR CROATIA

No	EFA elements	Type
1	Landscape features	Stable elements / Permanent for period of minimum 3 years
2	Short rotation copices	
3	Buffer strips along forest edges	
4	Buffer strips along water courses	
5	Land lying fallow	Become stable – if after 3 years remain on the same place
6	Catch crops or green cover	Changeable elements / could be different from year to year
7	Nitrogen fixing crop	

22


 PAYING AGENCY FOR AGRICULTURE, FISHERIES AND RURAL DEVELOPMENT

LPIS Workshop Brussels 24-26 Sep 2014

ECOLOGICAL FOCUS AREA (EFA)

- ❑ Testing for EFA layer was performed in three counties
 - 1) East part – Požeška county
 - 2) Central part Zagrebačka county and
 - 3) South part – Zadarska county
- ❑ Software upgrade is in progress
- ❑ Implementation of EFA layer in PAAFRD (app 150 staff) through two phases
 - ❑ Initial vectorization (all counties will be involved)
 - ❑ Verification through the meeting with Farmers (8.600 Farms – more than 90% in the continental part)
- ❑ EFA layer will be ready for use by the end of 2014

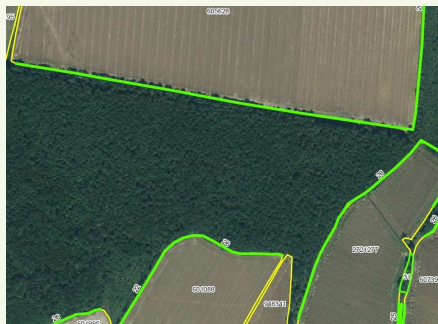

23

 PAYING AGENCY FOR AGRICULTURE, FISHERIES AND RURAL DEVELOPMENT

LPIS Workshop Brussels 24-26 Sep 2014


EFA TESTING 2014 RESULTS

- ❑ All activated LF will be automatically added into the EFA layer
- ❑ Buffer strips along forest and water courses (as lines) will be digitized
- ❑ Verification with farmers after initial digitization is needed

- ❑ Implemented with support of EU funded IACS technical assistance project (consortium subjects are CSI Piemonte / KING ICT / Ekotoxa)

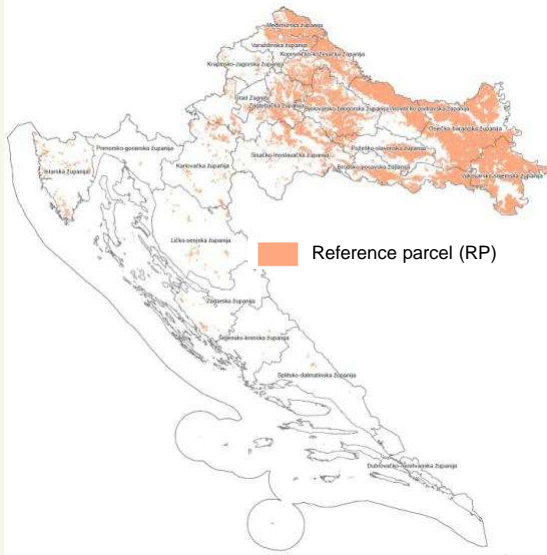
24

 PAYING AGENCY FOR AGRICULTURE, FISHERIES AND RURAL DEVELOPMENT


LPIS Workshop Brussels 24-26 Sep 2014

Plan for the digitization of EFA layer 2014/2016

- ❑ The distribution of RPs managed by EFA relevant farmers with more than 15 ha – will be digitized during 2014
- 1) **Ttl Farms no - 8.631**
- 2) **Ttl Area – 532.632 ha**
- 3) **Ttl RP no – 225.810**
- ❑ All other potential EFA elements will be digitized during 2015/2016



25


 PAYING AGENCY FOR AGRICULTURE, FISHERIES AND RURAL DEVELOPMENT

LPIS Workshop Brussels 24-26 Sep 2014

ECOLOGICAL FOCUS AREA (EFA) - CALCULATOR

- ❑ Methodology will be developed during 2nd phase of EFA testing (Oct 2014)
- ❑ Upgrade of AGRONET Application (Nov/Dec 2014)
- ❑ Ready for use (during Jan 2015)
- ❑ Integration of EFA calculator with Aid Application (Possible through the Geo-spatial Aid Application) (Mar 2015)

26




PAYING AGENCY FOR AGRICULTURE, FISHERIES AND RURAL DEVELOPMENT

LPIS Workshop Brussels 24-26 Sep 2014

RURAL DEVELOPEMENT MEASURES FOR 2015

- ❑ Implementation of ANC area
- ❑ Implementation of attributes in LPIS layer for
 - ❑ Extensive orchards and olive groves
 - ❑ Flower and grass strips
- ❑ Spatial identification of high nature value grasslands
- ❑ Identification of RP in LPIS according to registration as organic farming

27



PAYING AGENCY FOR AGRICULTURE, FISHERIES AND RURAL DEVELOPMENT

LPIS Workshop Brussels 24-26 Sep 2014

Conclusion:

- ❑ Croatian LPIS has almost all new requirements implemented except EFA and GA
- ❑ Cooperation with other relevant institutions have been established
- ❑ LPIS upgrade is carried out in close co-operation with EU funded IACS technical assistance project started in May2014
- ❑ Great challenge for the Agency will be establishment of the EFA layer (education + vectorization + verification + control) and use it through EFA calculator

28



PAYING AGENCY FOR AGRICULTURE, FISHERIES AND RURAL DEVELOPMENT

**Thank you for your
attention!**

29