



# Overview of scores and feedback on remedial action plans

ETS 2013

Agriculture  
and Rural  
Development



## Outline

- Missing ETS reports
- Overview of the scores
- Analysis of ETS results
- Audit results

Agriculture  
and Rural  
Development



## Missing ETS reports (11/04/2014)

- CY
- HU
- FR
- LV
- PT

Agriculture  
and Rural  
Development



## Overview of 2013 scores - 1

QE	LPHS	AT	BE-F	DE-W	DG	CY	CZ	DE-BB	DE-BW	DE-BY	DE-HE	DE-MV	DE-NI	DE-NW	DE-RP	DE-SH	DE-SL	DE-SN	DE-ST	DE-TH	DK	EE	EL
	Scheme	SPS	SPS	SPS	SAPS	SAPS	SAPS	SPS	SPS	SPS	SPS	SPS	SPS	SPS	SPS	SPS	SPS	SPS	SPS	SPS	SAPS	SPS	
	Rp type	FB	AP	PB	PB	PB	0FB	CP	CP	FB	AP	PB	PB	PB	CP	CP	PB	AP	PB	PB	PB	FB	PB
	sample size	1250	800	500	800	0	1250	500	1250	1250	800	1250	800	1250	1250	500	500	500	500	500	800	500	1250
QE1	QE1a eligible %	99.35	99.53	102.00	121.00	0.00	100.02	99.89	99.96	99.77	99.99	99.76	99.84	100.23	99.81	99.42	99.68	99.82	99.98	99.90	98.90	98.97	108.13
	QE1b negative	-0.55	-0.47	0.00	0.84	0.00	-0.16	-0.25	-0.07	-0.21	-0.51	-0.04	-0.21	-0.05	-0.46	-0.13	-0.14	-0.04	0.00	-0.04	-0.84	-0.23	-2.69
	QE1b positive	0.03	0.18	2.81	24.12	0.00	0.21	0.59	0.09	0.16	0.54	-0.04	0.01	0.02	0.09	-0.02	0.38	-0.08	0.00	0.20	0.13	0.06	6.68
QE2	QE2 nc >0.1 ha	49	31	39	554	0	157	25	3	100	155	17	37	17	6	43	30	4	2	16	162	18	454
	QE3 update	0	3	5	49	0	35	1	5	6	34	6	9	14	7	15	0	2	0	10	87	5	444
	QE3 upgrade	0	0	5	273	0	0	0	0	0	0	0	0	0	0	0	0	0	0	0	0	0	0
	QE3 completeness	0	0	45	31	0	0	10	0	0	39	0	0	3	0	2	0	1	0	0	0	0	0
	QE3 correctness	56	37	10	235	0	124	14	0	34	95	17	34	2	0	90	32	1	2	9	52	0	0
	QE3 design	0	0	0	2	0	0	0	0	0	2	0	0	0	0	0	0	0	0	0	20	7	10
QE3	GAC	0	0	0	0	0	0	0	0	0	0	0	0	0	0	0	0	0	0	0	0	2	0
	QE4 CD	12	10	0	5	0	6	0	0	0	15	4	2	3	1	13	2	0	0	0	0	4	0
QE4	QE5 % observed	100.00	100.00	94.93	89.18	0.00	99.97	97.13	100.19	99.89	100.02	98.12	98.19	98.34	97.75	97.31	100.10	97.86	98.64	99.04	93.20	97.92	86.80
QE4	QE5 % IACS	99.94	100.00	96.25	0.00	99.85	96.70	99.98	99.52	98.13	96.92	97.15	96.45	97.29	95.49	92.19	94.69	97.53	94.66	98.57	97.27	78.15	
QE6	QE6 change rate	0.00	1.51	3.42	6.12	0.00	3.15	1.73	1.05	0.00	2.18	2.95	4.45	5.21	2.90	1.81	0.00	0.90	1.20	2.71	0.33	0.40	34.41
QE6	QE7 irregularities	0.20	0.38	0.77	0.20	0.25	0.58	0.10	0.41	0.16	0.45	0.70	0.35	0.29	0.50	0.62	0.07	0.26	0.14	0.14	0.14	0.14	

Agriculture  
and Rural  
Development

Agriculture  
and Rural  
Development

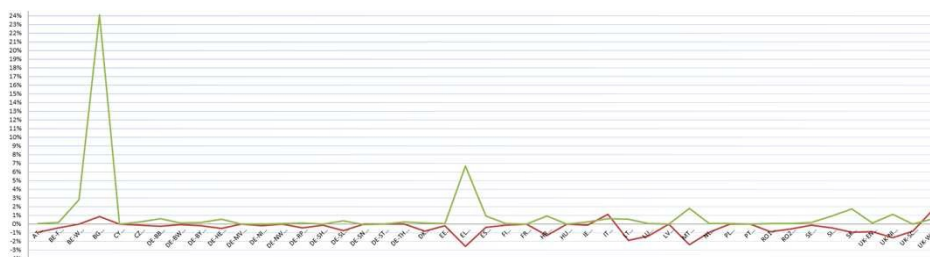
- Analyses received are in general detailed

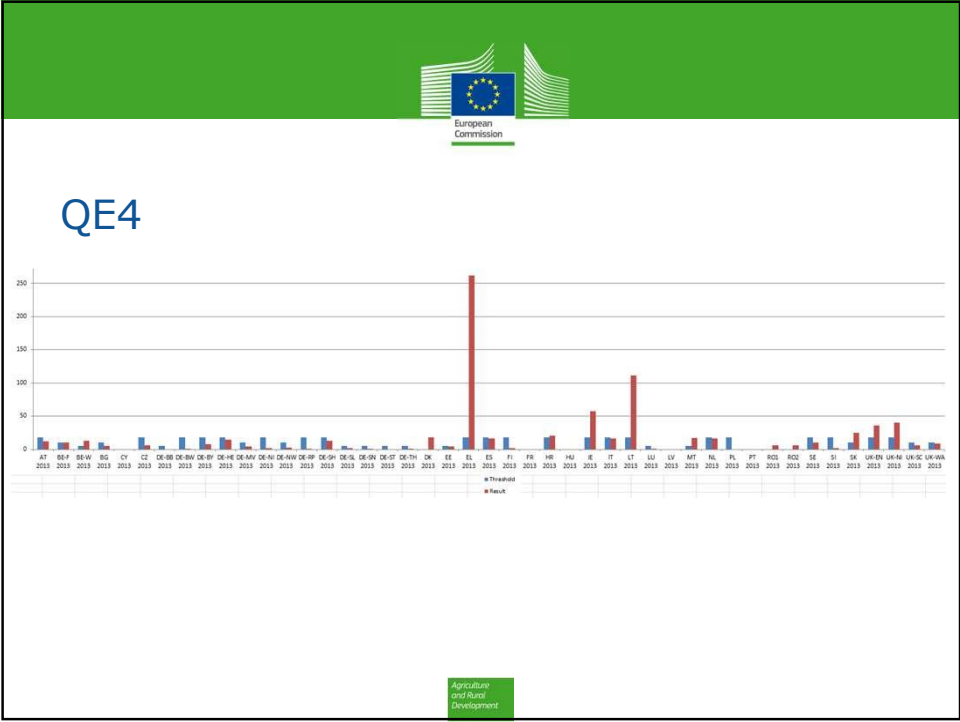
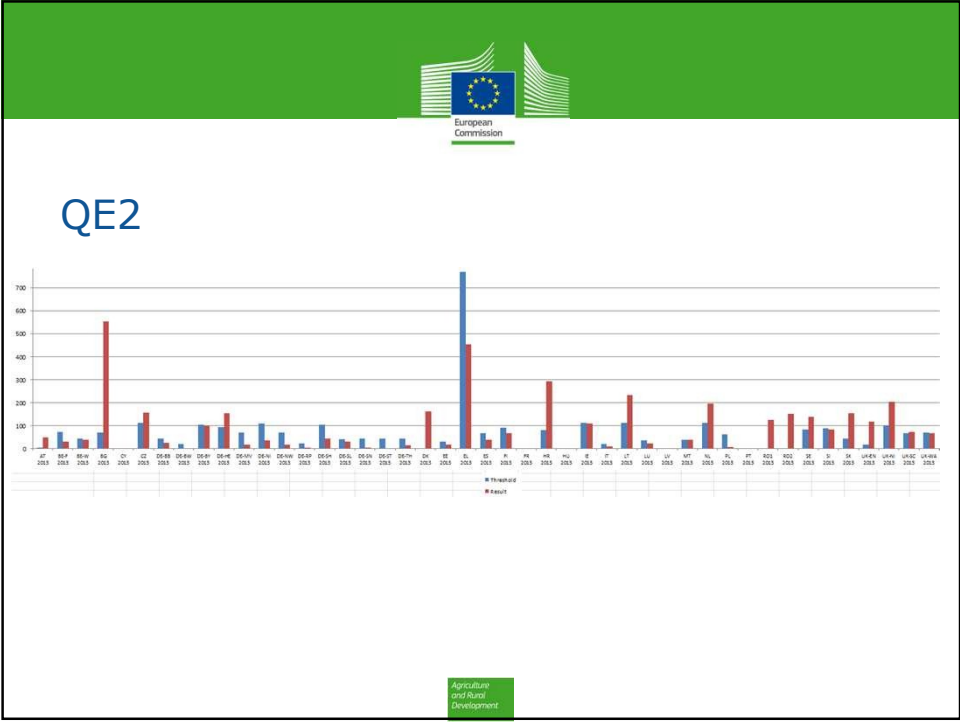


## Common errors/inconsistencies in figures

- QE1b UIB (positive deviation)- negative values
- QE1b LIB (negative deviation)- positive values
- QE2 with incorrect thresholds/ thresholds not provided
- QE4 without thresholds

## QE1







## Common errors/inconsistencies in figures;

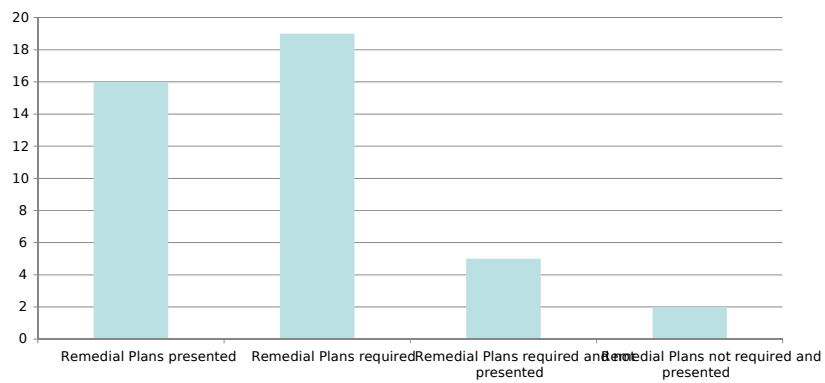
- Scores are "non-conforming" but qualitative assessment is "conforming"
- Poor results for the QE:s but no overall assessment
  - Comparison with N-1 useful



## Common errors/inconsistencies in figures

- Failing QEs (1, 2 or 4) but no remedial action plan
- Remedial plan not in line with results, or too general

## Remedial Plans



## Audit results

- Zone selection
- Incorrect scope of reference population -> distortion of results, e.g. population before review.
- "Skipping" of parcels is done too quickly



## Audit results

- Incorrect interpretation of "eligible land"
- Need for Rapid Field Visits
- Good analysis of problem but incorrect categorisation
- VHR satellite not used due to availability of aerial ortho-imagery

